



REVIEWED
By Brittany Wylie at 2:42 pm, Sep 10, 2019

9/9/2019

Worklist: 3666

<u>LAB_CASE</u>	<u>ITEM</u>	<u>TASK_ID</u>	<u>DESCRIPTION</u>	
C2019-1474	1	162890	AM 28 Blood Multi-Drug Quant Panel 1 by LC-QC	
C2019-1531	1	162891	AM 28 Blood Multi-Drug Quant Panel 1 by LC-QC	
C2019-1572	1	162874	AM 28 Blood Multi-Drug Quant Panel 1 by LC-QC	
C2019-1589	1	162875	AM 28 Blood Multi-Drug Quant Panel 1 by LC-QC	
C2019-1590	1	162876	AM 28 Blood Multi-Drug Quant Panel 1 by LC-QC	
C2019-1592	1	162877	AM 28 Blood Multi-Drug Quant Panel 1 by LC-QC	
C2019-1628	1	162878	AM 28 Blood Multi-Drug Quant Panel 1 by LC-QC	
C2019-1642	1	162879	AM 28 Blood Multi-Drug Quant Panel 1 by LC-QC	
C2019-1648	1	162880	AM 28 Blood Multi-Drug Quant Panel 1 by LC-QC	
C2019-1667	1	162881	AM 28 Blood Multi-Drug Quant Panel 1 by LC-QC	
C2019-1668	5	162882	AM 28 Blood Multi-Drug Quant Panel 1 by LC-QC	
C2019-1691	1	162883	AM 28 Blood Multi-Drug Quant Panel 1 by LC-QC	
C2019-1703	1	162884	AM 28 Blood Multi-Drug Quant Panel 1 by LC-QC	
C2019-1705	1	162885	AM 28 Blood Multi-Drug Quant Panel 1 by LC-QC	
C2019-1712	1	162886	AM 28 Blood Multi-Drug Quant Panel 1 by LC-QC	
C2019-1714	1	162887	AM 28 Blood Multi-Drug Quant Panel 1 by LC-QC	
C2019-1721	2	162888	AM 28 Blood Multi-Drug Quant Panel 1 by LC-QC	
C2019-1737	1	162889	AM 28 Blood Multi-Drug Quant Panel 1 by LC-QC	

AM# 28: Multi-Drug Quantitation in Blood by LC-MS/MS

Extraction Date 09-06-19 Analyst: Anne Nord
Plate lot#: 190729 (part IDP-111) Plate Expiration: 1/29/20

Mobile phase A: 5mM Amm Form + 0.01% FA **Mobile phase B:** 0.01% Formic Acid in MeOH
0.5M Ammonium Hydroxide Ethyl Acetate 20% Methanol in Water

Blank Blood Lot: 445283-2 Hemostat **Blank Urine Lot:** 8919

Column: Agilent 120 EC-C18 (2.1x 100-~~4um~~)^{9/18/19} **LCMS-QQQ ID:** 69679
2.7 

Pre-Analytic:

- 1. Check levels of mobile phases and needle wash refill as needed. Ensure waste is not full.
- 2. Ensure correct column is installed and begin mobile phase flow allow to equilibrate ~ 30 minutes.
- 3. Create worklist:

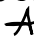
Analytic:

- 1. Remove standards, plate, controls, and samples from cold storage. Allow to reach room temperature.
- 2. Urine hydrolysis pipette: 250 ul urine in blank well, add 40 ul BG Turbo, add 100 ul 500 mm sodium phosphate buffer mix for at least five minutes ambient temperature.
Pipette **250 µL blood (calibrated pipette)** or 250 ul urine in wells of analytical (standards) plate. **Pipette ID: 1926134**
- 3. Place on shaking incubator at ambient temp., 900rpm for 15 minutes. *Shaker ID: 66759*
- 4. Pipette **250µL 00.5M ammonium hydroxide** in wells of analytical plate.
- 5. Place on shaking incubator at ambient temp., 900rpm for 15 minutes.
- 6. Transfer **300µL of blood+base** mixture to corresponding wells of SLE+ plate.
- 7. Apply positive pressure for approx. 10-15 seconds (or until no liquid remains on top of sorbent).
(Load at 85-100 PSI- Selector to the right) *Manifold ID: 66792*
- 8. Wait 5 minutes.
- 9. Add **900uL ethyl acetate**.
- 10. Wait 5 minutes.
- 11. Apply positive pressure for approx. 15 seconds. **(10-15 PSI- Selector to the left)**.
- 12. Add **900uL ethyl acetate**.
- 13. Wait 5 minutes.
- 14. Apply positive pressure for approx. 15 seconds. **(10-15 PSI- Selector to the left)**.
- 15. Remove plate containing eluate. Place on SPE Dry and evaporate to dryness at approx. 35°C.
SPE Dry ID: 66819
- 16. Reconstitute in **100µL 20% MeOH** and heat seal plate with foil.

Post-Analytic

- 1. Create batch and process data.
- 2. Make necessary changes to integration limits
- 3. Integration linear and R² values ≥0.98 for each analyte.
- 4. For unknown samples and controls: response ratio within 20% of average of controls and standards, RT within +/- 5% (tramadol RT +/-2%), S/N for primary transition >10 and secondary transitions >5.
- 5. Did all QCs pass for each analyte? Yes, see comments Add Control data to QC tracking spreadsheet.
- 6. Central File Packet to include: LIMS Worklist, Method Checklist, Calibration and Control Reports.

COMMENTS:

Curve limits: Benzoylcegonine 10-1000, Buprenorphine 2.5-50, metoprolol 5-500, norbuprenorphine 2.5-100, norhydrocodone 50-100. ¹⁰⁰⁰  ^{9/10/19}

Cyclobenzaprine qualitative only. Norbuprenorphine dropped 5ng calibrator secondary peak cut off.



Toxicology AM method 25 and 28 external prep information

working solution 10000 ng/ml in meoh amphetamine, dextromethorphan, methamphetamine, morphine, paroxetine, amitriptyline meperidine, doxepine, mirtazapine, 1000 ng/ml buprenorphine

Stock solution 1mg/ml (.1mg/ml buprenorphine) 100 ul each in 9000 ul meOH

Ppd 3/14/19 Exp: 3/14/20 lot 31420 by AMN

Drug	lot	expiration
amphetamine	FE06011503	6/1/2020
dextromethorphan	FN07231501	7/1/2020
methamphetamine	FE08101708	10/1/2022
morphine	FE08141515	11/1/2020
buprenorphine	FE09211501	9/1/2020
paroxetine	FN05111505	6/1/2020
mirtazapine	FN04201503	4/1/2020
meperidine	FE01191502	2/1/2020 (this compound will not be evaluated in this control after 2/1/2020)
doxepin	FN01281502	2/1/2020 (this compound will not be evaluated in this control after 2/1/2020)
amitriptyline	FN07081401	9/1/2019 (this compound will not be evaluated in this control after 9/1/2019)

AM 25-28 urine control 100 ul working solution lot (31420) in 5000 ul urine lot (31319)

ppd 9/5/19 Exp 3/14/2020

by AMN

Concentration 196 ng/ml each (19.6 ng/ml buprenorphine)

Lot 9519

AM #28 Multi-Drug Quant. Results

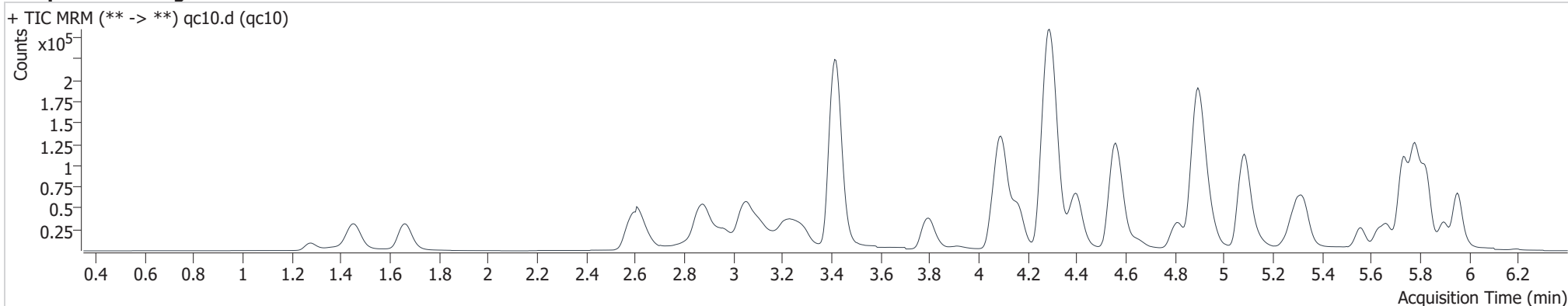
Batch results
Calibration Last Update

D:\MassHunter\Data\2019\am28-27 090619\QuantResults\mdq p1.batch.bin
9/9/2019 1:46:04 PM

Instrument 69679
Type QC
Acq. Method mdq p1 cda 121818.m
Sample Position P2-A2
Injection Volume 2
Acq. Date-Time 9/6/2019 7:54:54 PM
Sample Info.

Data File qc10.d
Sample qc10
Operator Anne Nord
Comment

Sample Chromatogram



Name	RT	Resp.	S/N	Ratio	S/N	ISTD Resp.	Final Conc.
6-MAM	3.188	1241	185.69	77.7	321.67	36777	0.938 ng/ml
7-aminoclonazepam	4.307	24161	329.44	85.2	144.12	106156	10.088 ng/ml
a-hydroxyalprazolam	5.714	3492	131.33	61.0	3556.6	18791	9.866 ng/ml
alpha-PVP	4.407	35618	4059.9	52.7	604.54	160256	9.942 ng/ml
Alprazolam	5.787	44154	214.82	110.1	387.26	162554	9.976 ng/ml
Amphetamine	3.117	42317	155.08	53.2	257.15	76440	10.457 ng/ml
Benzoylcegonine	3.931	2286	39.521	7.3	17.602	7990	9.377 ng/ml
Buprenorphine	5.739	155	18.147	32.6 High	24.083	4044	0.809 ng/ml
Bupropion	4.830	24847	1917.1	49.2	104.57	84368	10.428 ng/ml
Carisoprodol	5.738	40076	1157.4	58.6	69.452	194123	10.072 ng/ml
Citalopram	5.261	7669	31.569	50.8	2494.6	31988	10.453 ng/ml
Clonazepam	5.633	12843	8095.5	33.4	1678.9	21834	10.038 ng/ml
Cocaine	4.302	40136	2017.9	44.5	4691	311186	9.764 ng/ml
Codeine	2.653	8911	37.371	110.4	315.76	44966	10.261 ng/ml
Cyclobenzaprine	5.635	3877	278.65	10.8	175.69	11161	13.914 ng/ml
Dextromethorphan	5.311	3773	186.81	74.7	241.3	15718	11.275 ng/ml
Dextrorphan	4.161	11014	1916.5	207.4	1856.8	120352	10.739 ng/ml
Diazepam	5.957	27063	1396.3	85.5	628.15	129255	10.019 ng/ml

outside curve range
9/10/19

AM #28 Multi-Drug Quant. Results

Name	RT	Resp.	S/N	Ratio	S/N	ISTD Resp.	Final Conc.
Dihydrocodeine	2.622	23307	347.42	64.7	170.11	130973	10.293 ng/ml
Diphenhydramine	5.327	21248	595.98	33.7	213.82	104081	11.535 ng/ml
Doxylamine	4.574	82301	407.94	96.0	1268.5	356435	10.360 ng/ml
EDDP	5.300	7106	181.98	243.1	635.82	85198	9.721 ng/ml
Fentanyl	5.117	358	21.923	68.9	28.184	14967	1.205 ng/ml
Fluoxetine	5.715	4187	290.56	9.9	311.72	11930	14.470 ng/ml
Hydrocodone	3.074	20757	244.66	39.2	241.29	123898	9.942 ng/ml
Hydromorphone	1.668	23181	1165.8	69.7	1595.3	86905	10.117 ng/ml
Ketamine	4.087	44572	842.76	38.2	419.62	215311	10.113 ng/ml
Lamotrigine	4.329	5846	620.03	86.8	261.53	162554	8.484 ng/ml
Lorazepam	5.761	5918	175.22	54.7	24.013	162554	12.019 ng/ml
Meprobamate	4.957	18960	3052	30.4	605.27	91180	9.418 ng/ml
Methadone	5.664	10640	632.89	46.5	19.512	44061	11.934 ng/ml
Methamphetamine	3.284	47124	55.135	33.2	27.713	118239	13.180 ng/ml
Metoprolol	4.364	9502	787.88	94.9	553.5	118239	10.663 ng/ml
Mirtazapine	4.655	16647	1170	47.5	44.185	31988	10.972 ng/ml
Mitragynine	5.255	1193	803.07	41.9	356.25	44061	10.794 ng/ml
Morphine	1.282	4826	31255	23.3	2378.8	6334	9.965 ng/ml
Nordiazepam	5.902	16751	5568.5	60.4	408.97	55963	9.759 ng/ml
Norfentanyl	4.127	6079	218.54	43.4	36.373	288154	0.985 ng/ml
Norhydrocodone	3.125	776	9.5698	44.8	34	31326	34.654 ng/ml
Noroxycodone	2.977	17876	231.14	39.9	153.71	63206	10.303 ng/ml
O-desmethyl-tramadol	3.420	130024	6239.9	6.5	112.66	677670	10.404 ng/ml
Oxazepam	5.768	10485	128.44	75.9	127.79	60707	9.659 ng/ml
Oxycodone	2.900	43289	337.82	29.4	325.32	212603	10.149 ng/ml
Oxymorphone	1.455	28350	21.18	44.4	40745	115092	9.484 ng/ml
Phentermine	3.828	12261	69.243	4.8	14.777	135074	10.135 ng/ml
Promethazine	5.563	5995	2685.3	34.2	139.63	21042	13.014 ng/ml
Quetiapine	5.555	15510	2966.5	60.0	105.49	20621	10.424 ng/ml
Sertraline	5.782	1911	13.429	106.4	2110.2	7292	12.420 ng/ml
Temazepam	5.829	36583	604.17	30.6	78.648	183741	10.289 ng/ml
Tramadol	4.283	102961	6103.7	3.6	147.73	509785	10.570 ng/ml
Trazodone	5.142	11130	1809.8	77.5	16.955	40572	11.552 ng/ml
Venlafaxine	5.083	54753	692.14	40.2	438.8	281995	10.183 ng/ml
Zolpidem	4.909	126378	526.79	31.0	8590.7	558148	10.223 ng/ml

outside curve range
9/10/19 *A*

AM #28 Multi-Drug Quant. Results

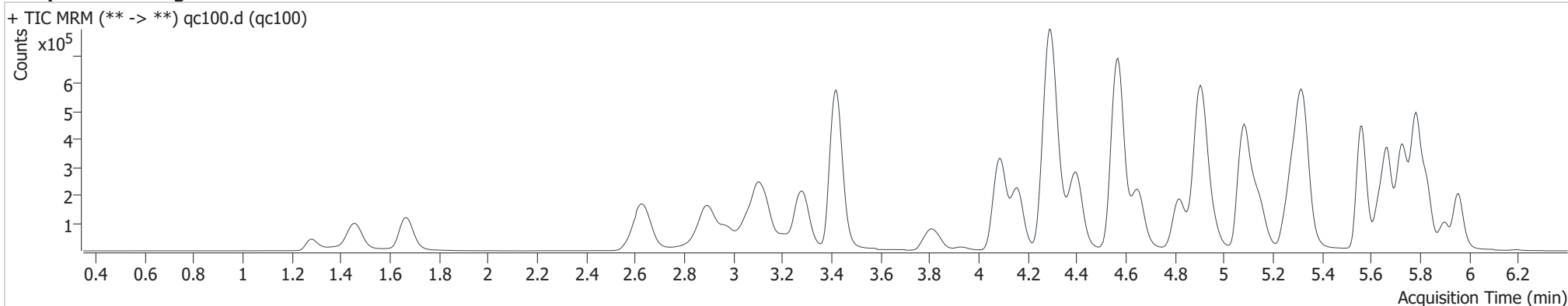
Batch results
Calibration Last Update

D:\MassHunter\Data\2019\am28-27 090619\QuantResults\mdq p1.batch.bin
9/9/2019 1:46:04 PM

Instrument 69679
Type QC
Acq. Method mdq p1 cda 121818.m
Sample Position P2-B2
Injection Volume 2
Acq. Date-Time 9/6/2019 8:05:44 PM
Sample Info.

Data File qc100.d
Sample qc100
Operator Anne Nord
Comment

Sample Chromatogram



Name	RT	Resp.	S/N	Ratio	S/N	ISTD Resp.	Final Conc.
6-MAM	3.188	14027	3887.9	72.6	3758.4	40136	9.938 ng/ml
7-aminoclonazepam	4.307	202142	241.8	84.9	7075.1	94624	104.196 ng/ml
a-hydroxyalprazolam	5.709	26015	1464.1	58.0	895.78	15008	100.144 ng/ml
alpha-PVP	4.402	449916	811.98	52.5	2227	207327	96.010 ng/ml
Alprazolam	5.787	365118	2537.5	111.4	2096.5	132042	98.921 ng/ml
Amphetamine	3.117	551226	2148.7	52.5	2500.3	106744	104.783 ng/ml
Benzoylcegonine	3.931	19030	1169.4	8.6	1226.7	7178	93.778 ng/ml
Buprenorphine	5.744	4210	540.08	15.3	409.53	15954	11.225 ng/ml
Bupropion	4.824	348713	2832.9	59.3	4261.2	142513	101.996 ng/ml
Carisoprodol	5.738	311246	4.3271E+05	59.3	3254.5	156905	100.132 ng/ml
Citalopram	5.261	247536	13620	46.8	4529.7	114543	100.781 ng/ml
Clonazepam	5.633	101910	3841.4	33.4	30117	18287	103.707 ng/ml
Cocaine	4.302	476669	1.3315E+05	44.0	3598.9	381010	96.387 ng/ml
Codeine	2.653	91443	288.43	108.2	221.35	47122	103.533 ng/ml
Cyclobenzaprine	5.640	238408	2.8009E+05	10.4	1424.7	97641	99.004 ng/ml
Dextromethorphan	5.306	159738	8857.7	75.1	5598	75538	102.554 ng/ml
Dextrorphan	4.161	162628	12552	210.7	26303	186577	103.048 ng/ml
Diazepam	5.957	240292	10166	86.2	1406.3	118882	98.295 ng/ml

qc100

Generated at 1:46 PM on 9/9/2019

AM #28 Multi-Drug Quant. Results

Name	RT	Resp.	S/N	Ratio	S/N	ISTD Resp.	Final Conc.
Dihydrocodeine	2.622	239338	1556.7	65.7	527.85	140309	106.193 ng/ml
Diphenhydramine	5.327	685020	1596.6	34.5	16644	392196	99.373 ng/ml
Doxylamine	4.569	1134112	21152	97.5	50867	519241	98.806 ng/ml
EDDP	5.295	149300	45922	242.9	1437.5	184111	98.265 ng/ml
Fentanyl	5.122	22599	4974.3	73.7	16703	119447	9.839 ng/ml
Fluoxetine	5.715	265496	30262	9.0	23661	114183	99.136 ng/ml
Hydrocodone	3.074	231149	1101.1	39.6	805.65	140453	103.215 ng/ml
Hydromorphone	1.668	233956	13094	74.0	15898	89900	100.146 ng/ml
Ketamine	4.087	485343	2395.7	38.1	3685.7	240821	102.010 ng/ml
Lamotrigine	4.329	56303	642.36	86.6	2160.5	132042	100.863 ng/ml
Lorazepam	5.761	37038	1817.4	56.7	186.39	132042	105.379 ng/ml
Meprobamate	4.957	159208	1.9966E+05	29.7	98.114	75713	95.001 ng/ml
Methadone	5.669	422175	6044.3	46.8	7653.9	210169	99.712 ng/ml
Methamphetamine	3.284	459394	776.39	39.4	545.89	161710	122.732 ng/ml
Metoprolol	4.359	114356	9051.2	96.1	3882.8	161710	100.269 ng/ml
Mirtazapine	4.650	462590	40192	48.2	5239.4	114543	83.225 ng/ml
Mitragynine	5.255	56502	54616	40.3	34554	210169	111.525 ng/ml
Morphine	1.282	46196	2.5639E+05	22.5	17429	6192	98.632 ng/ml
Norbuprenorphine	5.029	669	370.82	105.6	107.52	3926	9.071 ng/ml
Nordiazepam	5.902	137609	30114	60.8	1.2565E+05	47031	101.883 ng/ml
Norfentanyl	4.122	74423	9550	40.2	1796.8	355808	9.456 ng/ml
Norhydrocodone	3.120	15510	602.26	38.8	245.77	42715	97.471 ng/ml
Noroxycodone	2.977	194015	598.68	41.1	408.28	69994	102.739 ng/ml
O-desmethyl-tramadol	3.420	1313513	48682	6.4	1640.8	711756	97.735 ng/ml
Oxazepam	5.768	58661	411.58	71.6	207.64	33049	107.007 ng/ml
Oxycodone	2.894	463230	512.58	29.4	3485.2	231192	106.190 ng/ml
Oxymorphone	1.455	270904	6.5074E+05	43.6	25.194	111553	103.515 ng/ml
Phentermine	3.828	170103	480.81	4.5	33.254	191939	104.629 ng/ml
Promethazine	5.563	405938	2138.7	32.0	591.97	185608	100.936 ng/ml
Quetiapine	5.555	369614	4.2076E+05	57.6	2.2143E+05	52442	101.648 ng/ml
Sertraline	5.782	130954	2671.5	102.5	1.2991E+05	65828	97.579 ng/ml
Temazepam	5.829	307645	10011	31.0	362.06	156156	100.094 ng/ml
Tramadol	4.283	1133737	95665	3.5	95.974	607454	104.497 ng/ml
Trazodone	5.142	313803	25540	79.0	23657	141960	90.242 ng/ml
Venlafaxine	5.078	757388	2376.2	39.1	6498.6	405316	95.868 ng/ml
Zolpidem	4.909	1304700	31060	30.9	8920.5	594156	101.627 ng/ml

AM #28 Multi-Drug Quant. Results

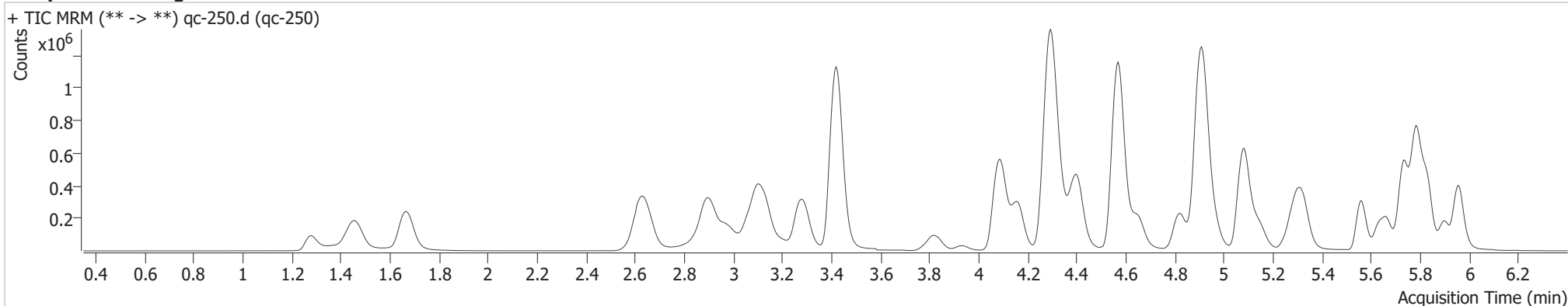
Batch results
Calibration Last Update

D:\MassHunter\Data\2019\am28-27 090619\QuantResults\mdq p1.batch.bin
 9/9/2019 1:46:04 PM

Instrument 69679
Type QC
Acq. Method mdq p1 cda 121818.m
Sample Position P2-C2
Injection Volume 2
Acq. Date-Time 9/6/2019 8:16:32 PM
Sample Info.

Data File qc-250.d
Sample qc-250
Operator Anne Nord
Comment

Sample Chromatogram



Name	RT	Resp.	S/N	Ratio	S/N	ISTD Resp.	Final Conc.
6-MAM	3.188	32904	3377.9	74.2	204.14	37626	24.905 ng/ml
7-aminoclonazepam	4.307	429170	14083	84.2	299.46	83787	251.418 ng/ml
a-hydroxyalprazolam	5.709	62869	245.01	58.6	2227.4	14805	246.735 ng/ml
alpha-PVP	4.402	870493	17820	51.7	832.53	155689	247.179 ng/ml
Alprazolam	5.787	841577	10581	111.7	9210.4	119762	250.945 ng/ml
Amphetamine	3.122	922112	1148.3	52.6	564	75066	250.456 ng/ml
Benzoylcegonine	3.931	56138	2965.8	8.0	5492.9	7894	252.964 ng/ml
Buprenorphine	5.744	2081	81.834	15.8	346.75	3368	27.582 ng/ml
Bupropion	4.824	484158	4048.3	58.7	3706.7	80055	255.190 ng/ml
Carisoprodol	5.738	757654	4.7195E+05	59.3	1688.8	153845	249.173 ng/ml
Citalopram	5.261	176295	12995	47.0	15116	33506	246.546 ng/ml
Clonazepam	5.633	256965	26713	33.0	344.4	18025	266.881 ng/ml
Cocaine	4.302	985321	1.4106E+05	43.7	23378	311578	243.934 ng/ml
Codeine	2.653	200496	1120.3	106.1	1623.7	40912	261.991 ng/ml
Cyclobenzaprine	5.635	86031	5344.8	10.1	535.68	14100	247.704 ng/ml
Dextromethorphan	5.306	82993	1248	77.2	1334.4	16436	245.461 ng/ml
Dextrorphan	4.161	249155	155.74	212.7	4956.8	114920	256.450 ng/ml
Diazepam	5.957	567655	5726.8	86.0	5236.6	110835	249.347 ng/ml

qc-250

AM #28 Multi-Drug Quant. Results

Name	RT	Resp.	S/N	Ratio	S/N	ISTD Resp.	Final Conc.
Dihydrocodeine	2.622	566889	30545	64.2	3165.5	137922	257.113 ng/ml
Diphenhydramine	5.327	460778	11998	34.2	2069.5	106161	247.077 ng/ml
Doxylamine	4.569	2086680	8602.1	97.1	15374	381601	247.510 ng/ml
EDDP	5.295	195767	2633.7	233.3	22102	92119	258.217 ng/ml
Fentanyl	5.127	8321	51.886	73.7	136.54	17836	24.323 ng/ml
Fluoxetine	5.715	76930	4719.9	8.4	3162.2	13302	247.446 ng/ml
Hydrocodone	3.074	498986	1876.7	39.8	6030.2	121804	257.864 ng/ml
Hydromorphone	1.668	557863	∞	73.5	2.321E+05	85841	250.333 ng/ml
Ketamine	4.087	1146578	2678.1	38.2	1614.7	230496	252.381 ng/ml
Lamotrigine	4.335	129434	4388.4	88.5	9124.9	119762	255.688 ng/ml
Lorazepam	5.755	73556	1868.8	56.8	428.89	119762	233.003 ng/ml
Meprobamate	4.957	368047	2.708E+05	30.4	11673	70224	236.745 ng/ml
Methadone	5.669	233380	3378.3	46.9	1.3349E+05	47882	242.029 ng/ml
Methamphetamine	3.284	692513	2721.1	39.2	160.33	114119	267.503 ng/ml
Metoprolol	4.364	208124	7945.8	97.7	1290.3	114119	259.891 ng/ml
Mirtazapine	4.650	405090	34407	48.0	21470	33506	248.578 ng/ml
Mitragynine	5.255	25586	15290	38.6	9713	47882	222.155 ng/ml
Morphine	1.282	113043	2.3845E+05	23.3	70440	6031	247.965 ng/ml
Norbuprenorphine	5.034	396	360.68	112.6	634.84	848	25.161 ng/ml
Nordiazepam	5.902	286984	36551	60.8	18461	40057	250.541 ng/ml
Norfentanyl	4.122	158800	3228.2	40.2	1590.9	291413	24.579 ng/ml
Norhydrocodone	3.125	39754	2997.2	41.1	112.11	35886	235.731 ng/ml
Noroxycodone	2.977	398045	2052.9	41.3	4884.1	59169	249.629 ng/ml
O-desmethyl-tramadol	3.420	3299637	73633	6.4	12278	696303	250.542 ng/ml
Oxazepam	5.763	101191	874.82	71.3	296.86	23613	259.526 ng/ml
Oxycodone	2.894	1103725	4817.7	29.0	4212	220230	266.683 ng/ml
Oxymorphone	1.455	636579	1.7453E+06	44.0	1.2623E+06	106520	256.388 ng/ml
Phentermine	3.828	285918	885.16	4.5	604.02	130416	259.783 ng/ml
Promethazine	5.563	141327	15035	31.9	921.07	25527	255.745 ng/ml
Quetiapine	5.555	428009	2.6248E+05	59.1	2.1751E+05	22935	269.926 ng/ml
Sertraline	5.782	33299	4796.8	103.7	26964	6913	236.994 ng/ml
Temazepam	5.829	731386	7702.9	30.8	1977.5	142985	259.573 ng/ml
Tramadol	4.283	2394748	694.6	3.4	636.4	526232	255.984 ng/ml
Trazodone	5.142	279531	1168	80.4	78355	47368	240.242 ng/ml
Venlafaxine	5.083	1386283	908.35	38.8	3728.3	291973	243.207 ng/ml
Zolpidem	4.909	3231544	2139.2	31.2	1.3282E+05	589016	254.339 ng/ml

AM #28 Multi-Drug Quant. Results

Batch results

D:\MassHunter\Data\2019\am28-27 090619\QuantResults\mdq p1.batch.bin

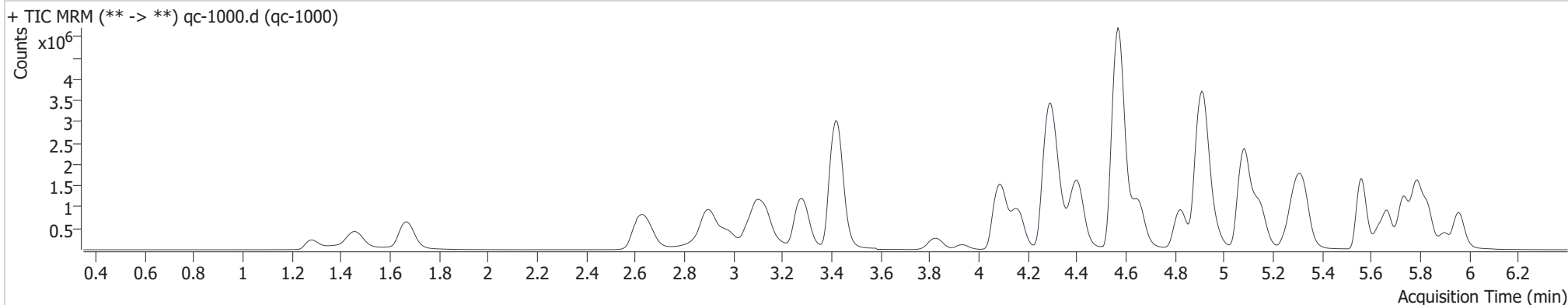
Calibration Last Update

9/9/2019 1:46:04 PM

Instrument 69679
Type QC
Acq. Method mdq p1 cda 121818.m
Sample Position P2-D2
Injection Volume 2
Acq. Date-Time 9/6/2019 8:27:20 PM
Sample Info.

Data File qc-1000.d
Sample qc-1000
Operator Anne Nord
Comment

Sample Chromatogram



Name	RT	Resp.	S/N	Ratio	S/N	ISTD Resp.	Final Conc.
6-MAM	3.183	116284	2057.4	75.4	1.2088E+05	29686	111.646 ng/ml
7-aminoclonazepam	4.313	629575	11564	85.3	25045	37401	828.840 ng/ml
a-hydroxyalprazolam	5.709	158567	959.75	58.6	1631.7	9732	949.465 ng/ml
alpha-PVP	4.407	3440084	81690	51.7	1.4108E+05	153600	989.739 ng/ml
Alprazolam	5.787	1985225	1925.9	109.6	13867	70916	998.849 ng/ml
Amphetamine	3.122	2957031	5832.9	50.8	8321.9	66097	914.448 ng/ml
Benzoylcegonine	3.931	230995	41870	7.6	3188.7	7713	1068.078 ng/ml
Buprenorphine	5.739	6561	198.02	17.8	322.37	3621	82.716 ng/ml
Bupropion	4.824	2109471	9.5813E+05	59.1	8341	88922	1007.127 ng/ml
Carisoprodol	5.738	1778378	1.6577E+06	59.2	19771	90769	992.452 ng/ml
Citalopram	5.261	913018	37942	46.4	3.668E+05	41712	1028.244 ng/ml
Clonazepam	5.633	677773	42777	32.8	1.7495E+05	12535	1015.019 ng/ml
Cocaine	4.307	3242247	3.8088E+05	43.3	3377.6	254755	982.292 ng/ml
Codeine	2.658	526666	483.12	104.6	44197	28200	999.420 ng/ml

outside curve range
9/10/19 *

AM #28 Multi-Drug Quant. Results

Name	RT	Resp.	S/N	Ratio	S/N	ISTD Resp.	Final Conc.
Cyclobenzaprine	5.635	522002	5153.4	10.6	3717.9	20592	1029.763 ng/ml
Dextromethorphan	5.306	436718	24113	77.1	17860	20792	1022.296 ng/ml
Dextrorphan	4.161	909915	9.6326E+05	212.3	1.6273E+05	103290	1042.278 ng/ml
Diazepam	5.957	1461405	17435	85.7	15641	70639	1007.765 ng/ml
Dihydrocodeine	2.617	1691992	2269.8	65.9	966.34	119939	884.601 ng/ml
Diphenhydramine	5.332	2393911	34552	34.0	601.29	135551	1005.617 ng/ml
Doxylamine	4.569	9929877	6.1555E+05	97.7	4799.5	447946	1003.667 ng/ml
EDDP	5.295	1026439	1.1691E+05	239.4	99565	121425	1028.401 ng/ml
Fentanyl	5.127	47392	14211	73.9	38711	22782	108.614 ng/ml
Fluoxetine	5.715	360751	4848.8	8.7	40480	16100	960.386 ng/ml
Hydrocodone	3.074	1720659	1570.6	38.9	836.18	105895	1024.645 ng/ml
Hydromorphone	1.668	1729715	3154.3	74.2	3.694E+06	65246	1021.709 ng/ml
Ketamine	4.087	3892232	5.1068E+05	38.1	2962.1	199689	990.105 ng/ml
Lamotrigine	4.335	292570	3378.1	87.0	6050.4	70916	976.117 ng/ml
Lorazepam	5.755	163061	5476.8	56.8	422.15	70916	877.544 ng/ml
Meprobamate	4.962	922194	2.0513E+05	30.0	14612	38964	1069.009 ng/ml
Methadone	5.669	1316295	83334	48.0	78651	68272	957.567 ng/ml
Methamphetamine	3.279	2720539	9045.5	39.1	714.62	122938	987.940 ng/ml
Metoprolol	4.364	645696	24637	95.6	2731.7	122938	750.018 ng/ml outside curve range 9/10/19
Mirtazapine	4.650	2403762	3.213E+05	47.6	82276	41712	1183.790 ng/ml
Mitragynine	5.255	133241	28229	39.2	35861	68272	812.655 ng/ml
Morphine	1.282	323572	9.1448E+05	23.6	5.9509E+05	4414	970.222 ng/ml
Norbuprenorphine	5.034	1809	353.17	109.3	2076.9	1104	88.871 ng/ml
Nordiazepam	5.902	645808	7079.3	61.8	7977.7	22590	1001.945 ng/ml
Norfentanyl	4.127	628200	1176.5	40.5	7022.2	264392	107.052 ng/ml
Norhydrocodone	3.125	161953	17.817	41.0	151.12	31594	981.814 ng/ml
Noroxycodone	2.977	1206260	5968.4	40.2	420.41	45789	978.124 ng/ml
O-desmethyl-tramadol	3.421	10810057	3.9924E+05	6.2	1543.6	554488	1029.893 ng/ml
Oxazepam	5.763	191292	374.45	72.3	607.55	10755	1079.782 ng/ml
Oxycodone	2.894	3638856	9557.7	29.1	2641.7	188868	1027.258 ng/ml
Oxymorphone	1.455	1712278	5.2504E+06	43.6	3.9043E+06	76909	958.231 ng/ml
Phentermine	3.828	1036427	4650.7	4.4	1034.8	131802	933.468 ng/ml
Promethazine	5.563	851675	5.0786E+05	32.1	4616	38009	1035.538 ng/ml
Quetiapine	5.555	2473783	2091	57.8	6.2985E+05	34872	1027.398 ng/ml
Sertraline	5.782	135094	1.0322E+05	102.6	1.1278E+05	6779	982.071 ng/ml
Temazepam	5.829	1868676	11750	30.9	3907.6	86640	1093.883 ng/ml
Tramadol	4.281	8066899	5.8901E+05	3.4	6076.2	445315	1021.458 ng/ml
Trazodone	5.142	1942530	1.4887E+05	80.4	1.0589E+06	69678	1133.455 ng/ml



AM #28 Multi-Drug Quant. Results

Name	RT	Resp.	S/N	Ratio	S/N	ISTD Resp.	Final Conc.
Venlafaxine	5.083	6138119	8807.5	38.2	54256	310242	1012.661 ng/ml
Zolpidem	4.910	10950934	3289.2	30.1	6928.4	505985	1004.167 ng/ml

AM #28 Multi-Drug Quant. Results

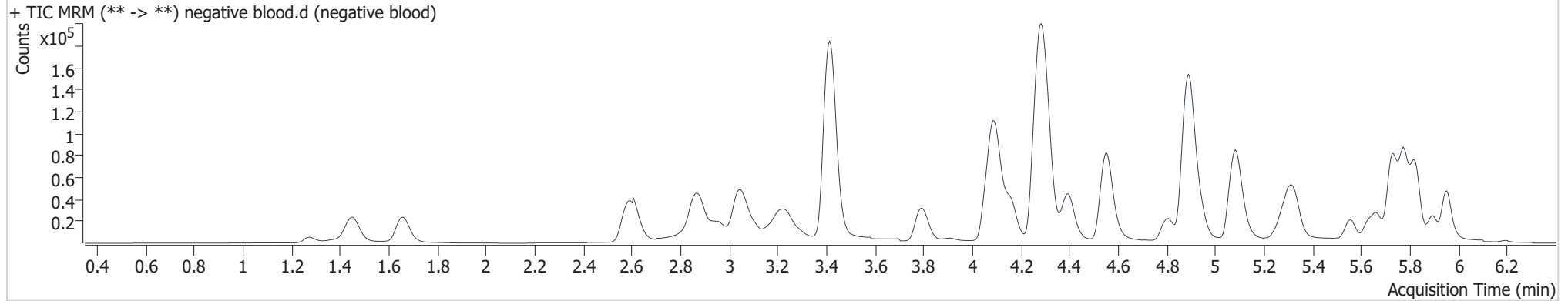
Batch results
Calibration Last Update

D:\MassHunter\Data\2019\am28-27 090619\QuantResults\mdq p1.batch.bin
9/9/2019 1:46:04 PM

Instrument 69679
Type Sample
Acq. Method mdq p1 cda 121818.m
Sample Position P2-E2
Injection Volume 2
Acq. Date-Time 9/6/2019 9:10:10 PM
Sample Info.

Data File negative blood.d
Sample negative blood
Operator Anne Nord
Comment

Sample Chromatogram



AM #28 Multi-Drug Quant. Results

Batch results

D:\MassHunter\Data\2019\am28-27 090619\QuantResults\mdq p1.batch.bin

Calibration Last Update

9/9/2019 1:46:04 PM

Instrument

69679

Type

Sample

Acq. Method

mdq p1 cda 121818.m

Sample Position

P2-F2

Injection Volume

2

Acq. Date-Time

9/6/2019 9:20:59 PM

Sample Info.**Data File**

external control urine.d

Sample

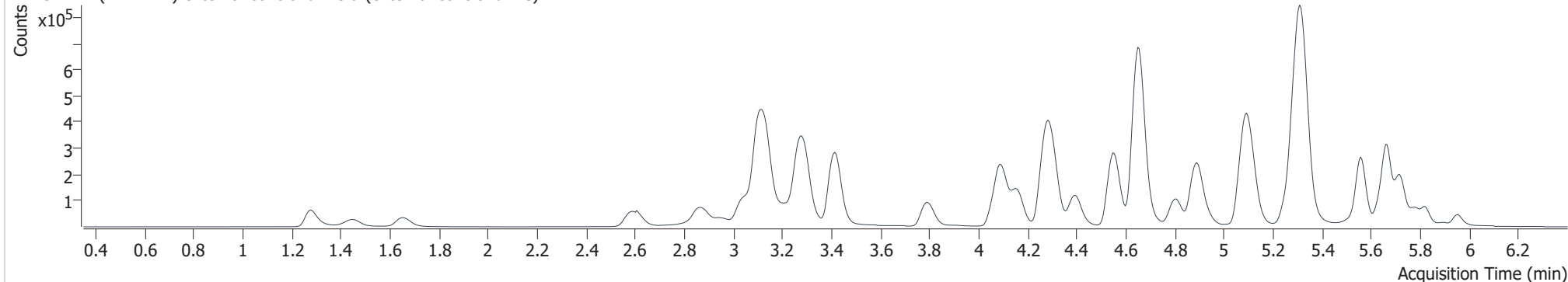
external control urine

Operator

Anne Nord

Comment**Sample Chromatogram**

+ TIC MRM (** -> **) external control urine.d (external control urine)



Name	RT	Resp.	S/N	Ratio	S/N	ISTD Resp.	Final Conc.
Amphetamine	3.122	1286083	10895	54.2	3721.3	220194	118.628 ng/ml
Buprenorphine	5.739	10477	859.46	16.0	1213.6	50249	8.669 ng/ml
Dextromethorphan	5.306	679904	2977.8	75.9	23408	281237	117.302 ng/ml
Methamphetamine	3.279	737401	2062.8	39.5	340.52	248715	128.294 ng/ml
Mirtazapine	4.650	1701800	730.13	48.0	1353.7	377687	92.821 ng/ml
Morphine	1.282	75297	6.1011E+05	23.3	1.0863E+05	8470	117.559 ng/ml



AM #28 Multi-Drug Quant. Results

Batch results

D:\MassHunter\Data\2019\am28-27 090619\QuantResults\mdq p1.batch.bin

Calibration Last Update

9/9/2019 1:46:04 PM

Instrument

69679

Type

Sample

Acq. Method

mdq p1 cda 121818.m

Sample Position

P2-H4

Injection Volume

2

Acq. Date-Time

9/7/2019 1:28:47 AM

Sample Info.**Data File**

negative urine.d

Sample

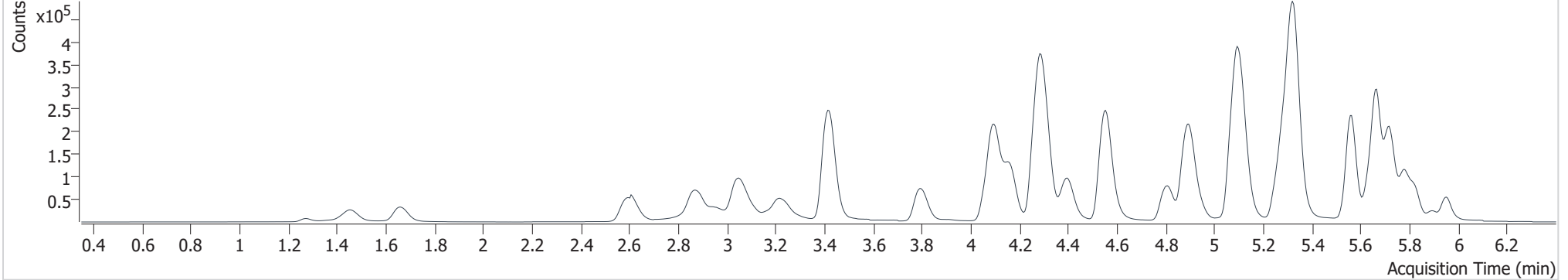
negative urine

Operator

Anne Nord

Comment**Sample Chromatogram**

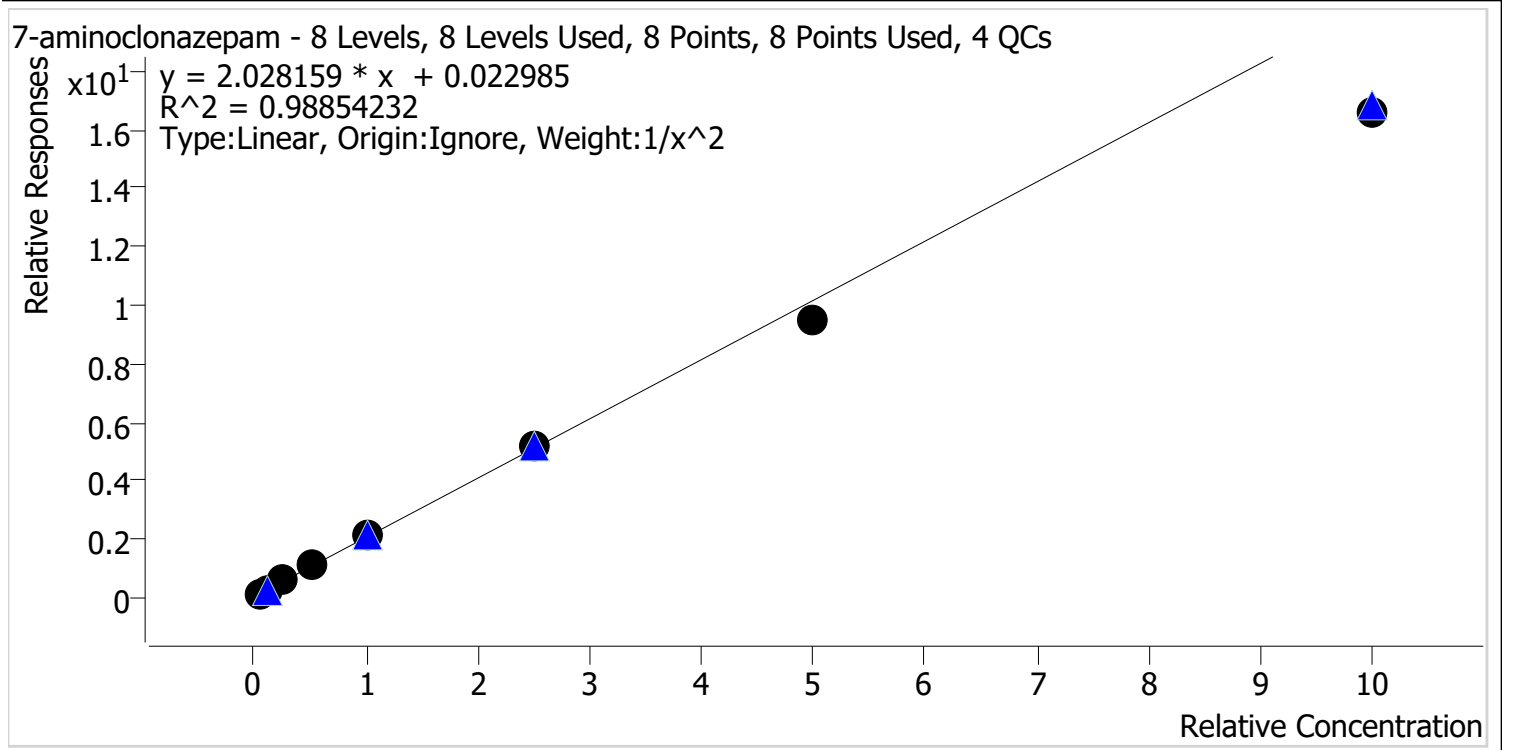
+ TIC MRM (** -> **) negative urine.d (negative urine)



Compound Calibration Report

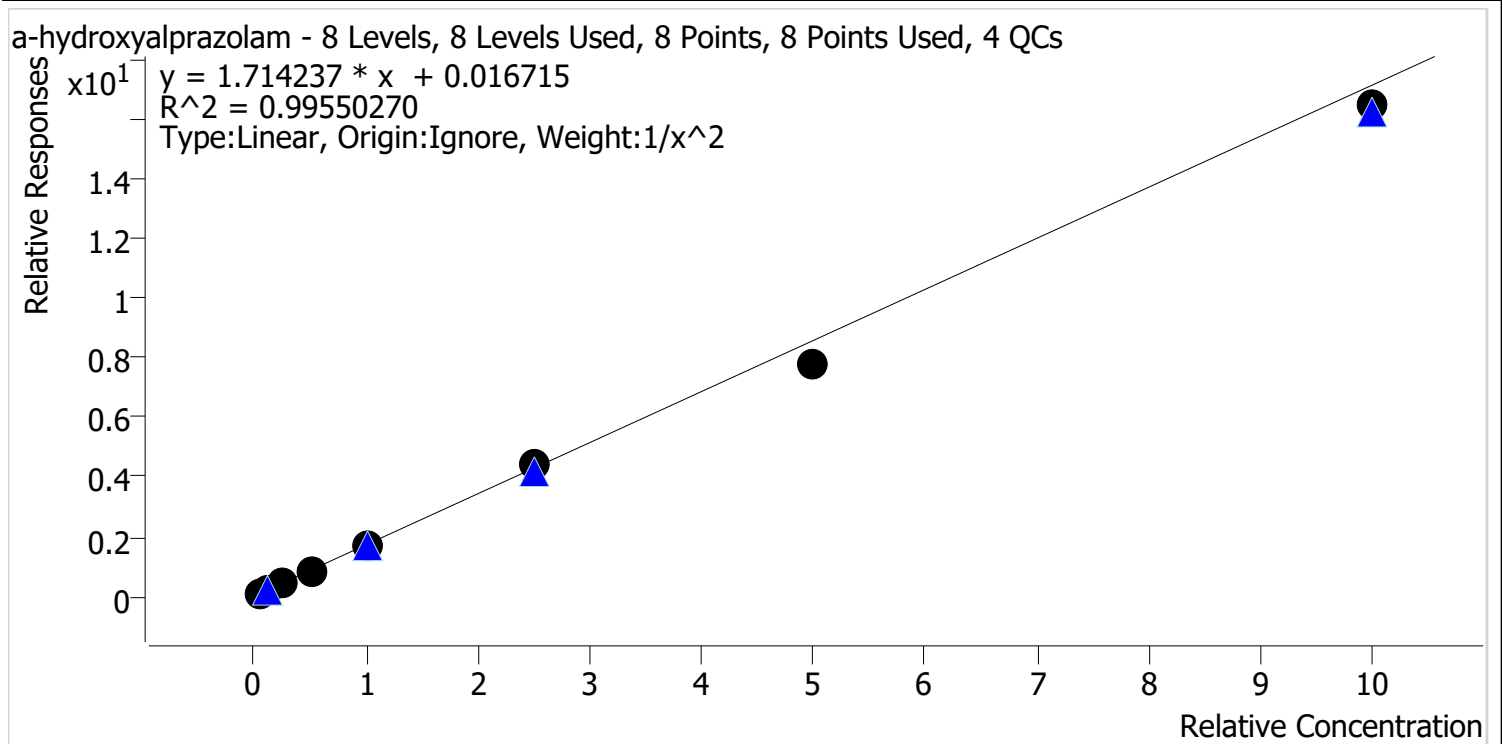


Batch results	D:\MassHunter\Data\2019\am28-27 090619\QuantResults\mdq p1.batch.bin		
Last Cal. Update	9/8/2019 8:41 AM		
Analyst Name	ISP\datastor		
Analyte	7-aminoclonazepam	Internal Standard	7-Aminoclonazepam-D4



Sample	Level	Enabled	Expected Concentration	Final Concentration	Accuracy
cal 1	1	✓	5.0	4.8	95.5
cal 2	2	✓	10.0	10.3	103.2
cal 3	3	✓	25.0	27.2	108.9
cal 4	4	✓	50.0	55.3	110.6
cal 5	5	✓	100.0	104.8	104.8
cal 6	6	✓	250.0	253.8	101.5
cal 7	7	✓	500.0	468.3	93.7
cal 8	8	✓	1000.0	819.8	82.0

Batch results	D:\MassHunter\Data\2019\am28-27 090619\QuantResults\mdq p1.batch.bin		
Last Cal. Update	9/8/2019 8:41 AM		
Analyst Name	ISP\datastor		
Analyte	a-hydroxyalprazolam	Internal Standard	a-hydroxyalprazolam-D5



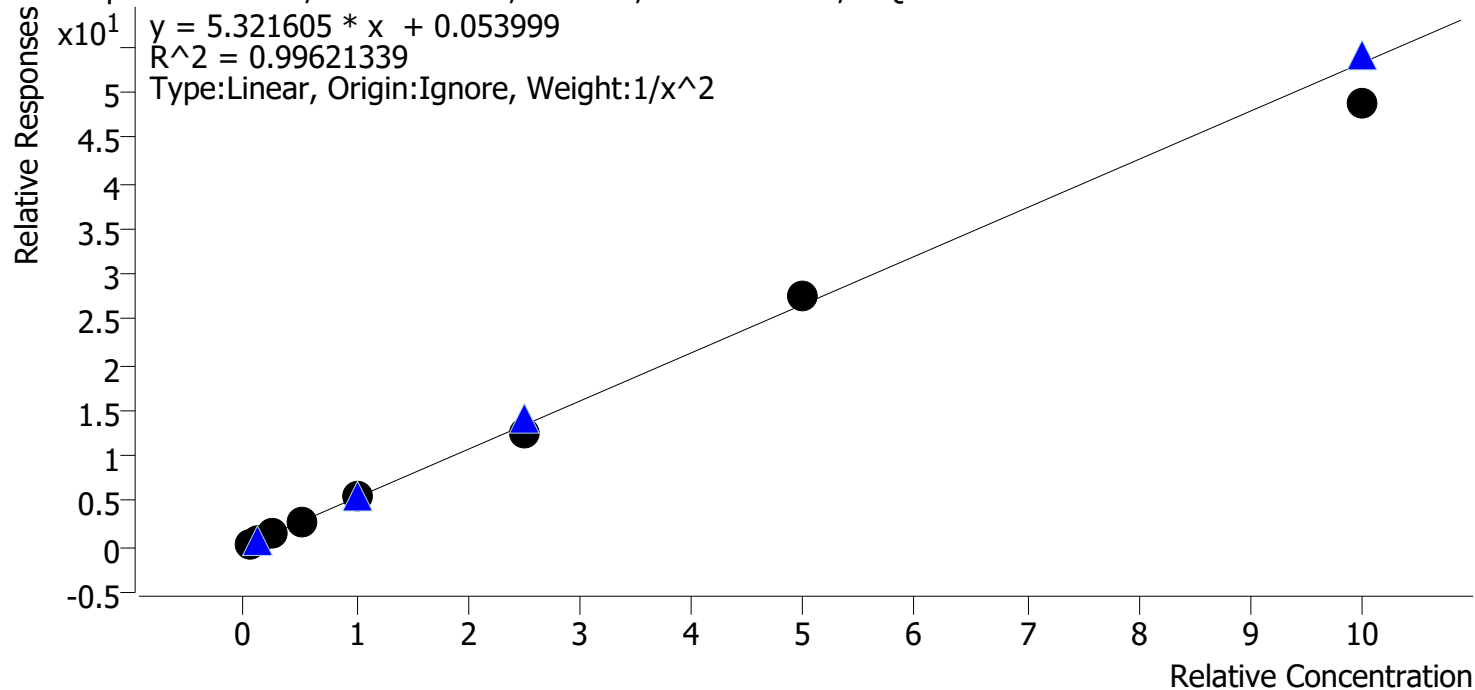
Sample	Level	Enabled	Expected Concentration	Final Concentration	Accuracy
cal 1	1	✓	5.0	4.8	96.2
cal 2	2	✓	10.0	10.4	103.7
cal 3	3	✓	25.0	27.4	109.7
cal 4	4	✓	50.0	50.4	100.8
cal 5	5	✓	100.0	98.0	98.0
cal 6	6	✓	250.0	260.5	104.2
cal 7	7	✓	500.0	456.0	91.2
cal 8	8	✓	1000.0	960.5	96.1

Compound Calibration Report

Batch results D:\MassHunter\Data\2019\am28-27_090619\QuantResults\mdq p1.batch.bin
Last Cal. Update 9/8/2019 8:41 AM
Analyst Name ISP\datastor
Analyte Clonazepam

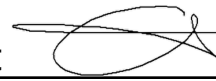
Internal Standard Clonazepam-D4

Clonazepam - 8 Levels, 8 Levels Used, 8 Points, 8 Points Used, 4 QCs



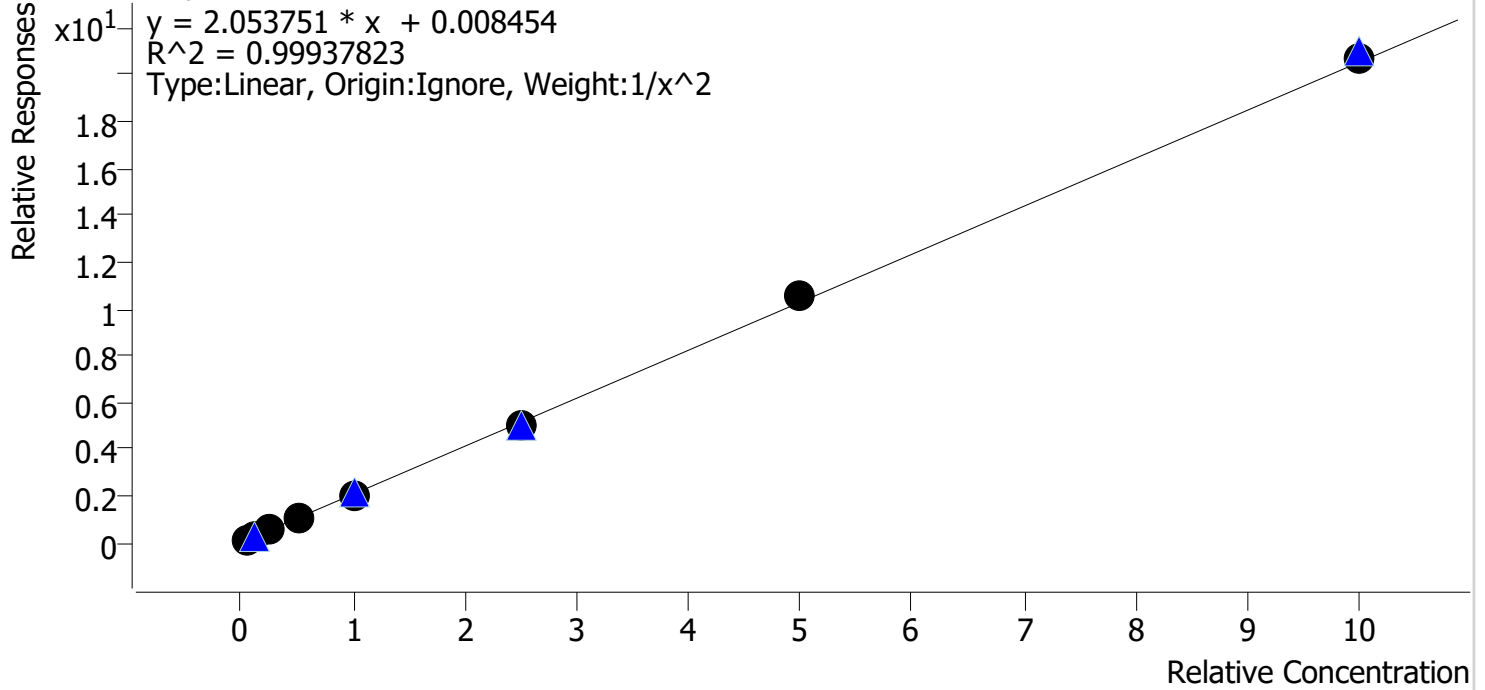
Sample	Level	Enabled	Expected Concentration	Final Concentration	Accuracy
cal 1	1	✓	5.0	4.8	96.3
cal 2	2	✓	10.0	10.6	105.6
cal 3	3	✓	25.0	25.6	102.3
cal 4	4	✓	50.0	52.5	105.1
cal 5	5	✓	100.0	102.1	102.1
cal 6	6	✓	250.0	233.3	93.3
cal 7	7	✓	500.0	516.8	103.4
cal 8	8	✓	1000.0	920.0	92.0

Compound Calibration Report



Batch results D:\MassHunter\Data\2019\am28-27_090619\QuantResults\mdq p1.batch.bin
Last Cal. Update 9/8/2019 8:41 AM
Analyst Name ISP\datastor
Analyte Dextromethorphan **Internal Standard** Dextromethorphan-D3

Dextromethorphan - 8 Levels, 8 Levels Used, 8 Points, 8 Points Used, 4 QCs

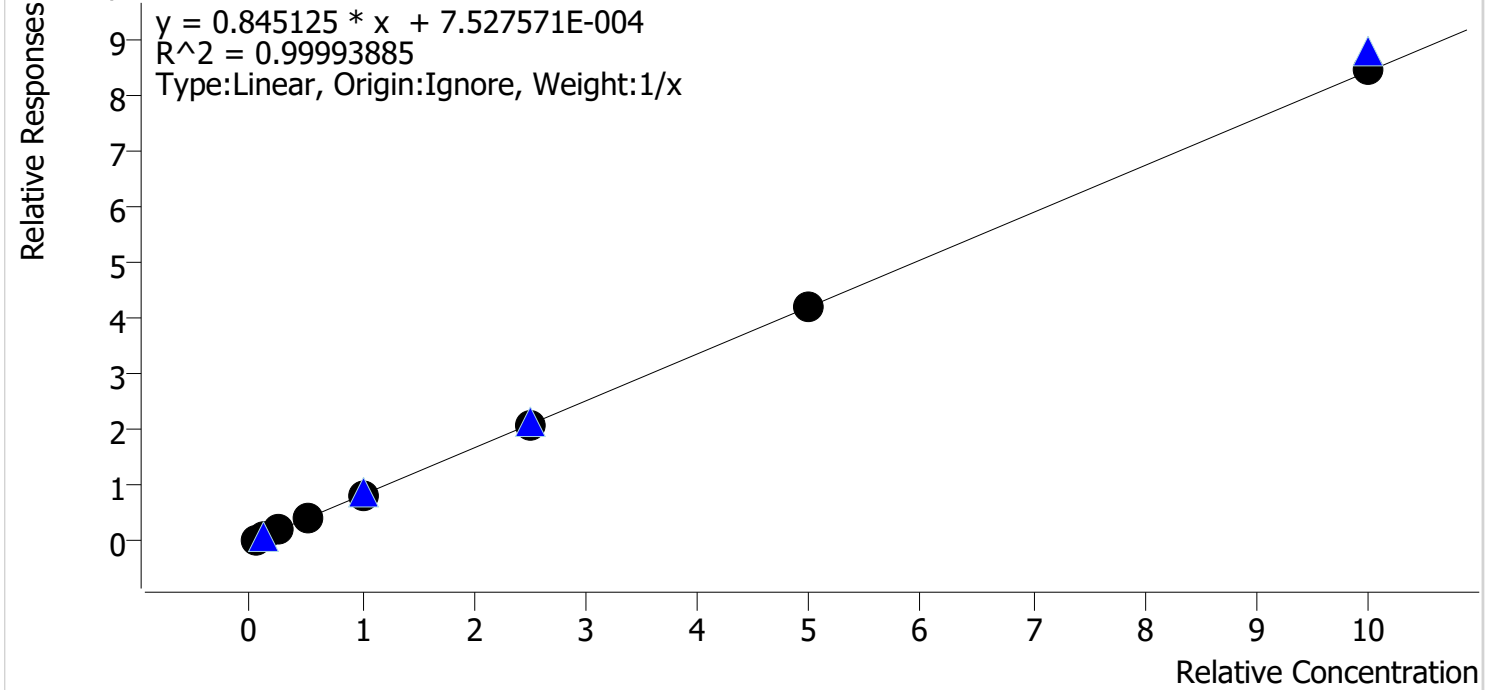


Sample	Level	Enabled	Expected Concentration	Final Concentration	Accuracy
cal 1	1	✓	5.0	5.1	101.8
cal 2	2	✓	10.0	9.6	95.9
cal 3	3	✓	25.0	25.3	101.1
cal 4	4	✓	50.0	50.4	100.9
cal 5	5	✓	100.0	99.6	99.6
cal 6	6	✓	250.0	244.4	97.8
cal 7	7	✓	500.0	510.7	102.1
cal 8	8	✓	1000.0	1008.1	100.8

Compound Calibration Report

Batch results D:\MassHunter\Data\2019\am28-27 090619\QuantResults\mdq p1.batch.bin
Last Cal. Update 9/8/2019 8:41 AM
Analyst Name ISP\datastor
Analyte Dextrorphan **Internal Standard** Dextrorphan-D3

Dextrorphan - 8 Levels, 8 Levels Used, 8 Points, 8 Points Used, 4 QCs

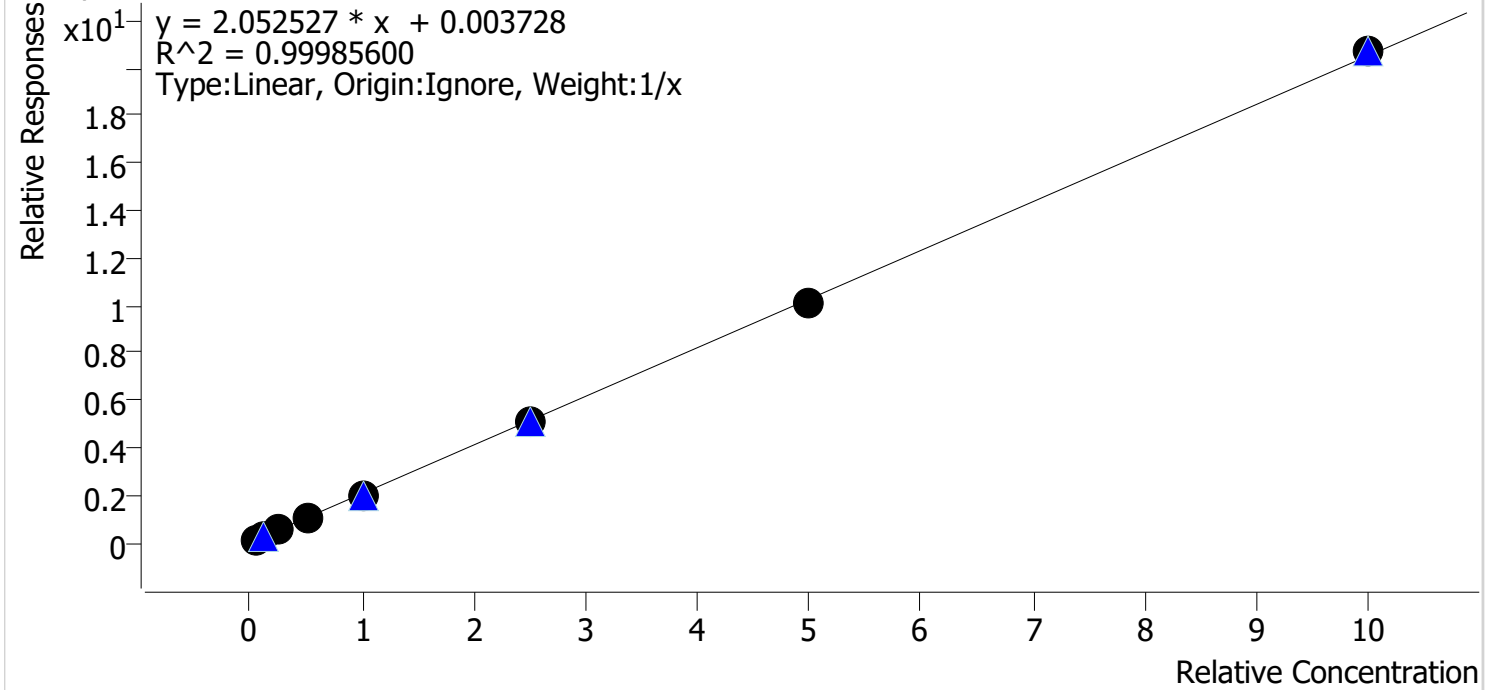


Sample	Level	Enabled	Expected Concentration	Final Concentration	Accuracy
cal 1	1	✓	5.0	5.0	100.4
cal 2	2	✓	10.0	10.0	100.0
cal 3	3	✓	25.0	25.3	101.2
cal 4	4	✓	50.0	50.5	101.1
cal 5	5	✓	100.0	98.4	98.4
cal 6	6	✓	250.0	246.9	98.7
cal 7	7	✓	500.0	498.6	99.7
cal 8	8	✓	1000.0	1005.3	100.5

Compound Calibration Report

Batch results D:\MassHunter\Data\2019\am28-27 090619\QuantResults\mdq p1.batch.bin
Last Cal. Update 9/8/2019 8:41 AM
Analyst Name ISP\datastor
Analyte Diazepam **Internal Standard** Diazepam-D5

Diazepam - 8 Levels, 8 Levels Used, 8 Points, 8 Points Used, 4 QCs



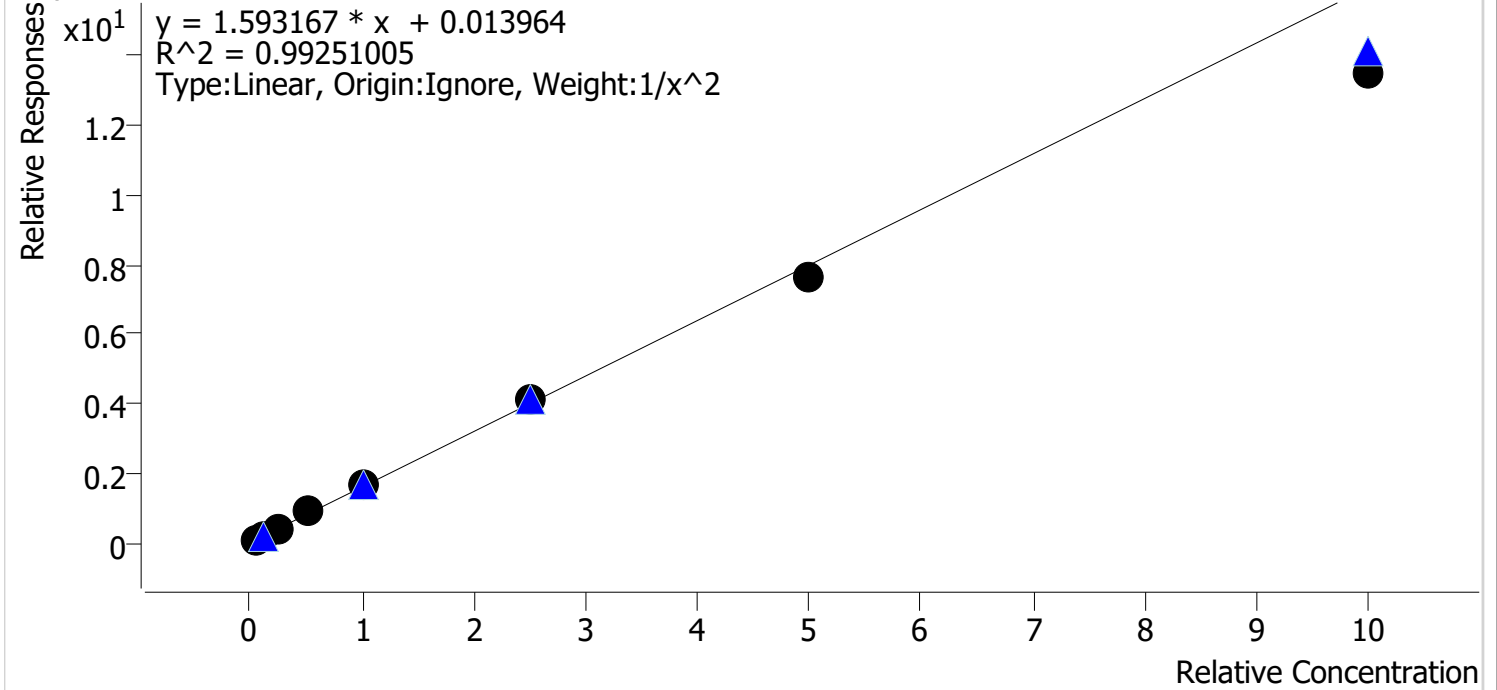
Sample	Level	Enabled	Expected Concentration	Final Concentration	Accuracy
cal 1	1	✓	5.0	5.0	101.0
cal 2	2	✓	10.0	10.1	101.4
cal 3	3	✓	25.0	24.5	98.1
cal 4	4	✓	50.0	50.7	101.5
cal 5	5	✓	100.0	98.6	98.6
cal 6	6	✓	250.0	250.5	100.2
cal 7	7	✓	500.0	491.8	98.4
cal 8	8	✓	1000.0	1008.7	100.9

Compound Calibration Report



Batch results	D:\MassHunter\Data\2019\am28-27 090619\QuantResults\mdq p1.batch.bin		
Last Cal. Update	9/8/2019 8:41 AM		
Analyst Name	ISP\datastor		
Analyte	Dihydrocodeine	Internal Standard	Dihydrocodeine-D6

Dihydrocodeine - 8 Levels, 8 Levels Used, 8 Points, 8 Points Used, 4 QCs

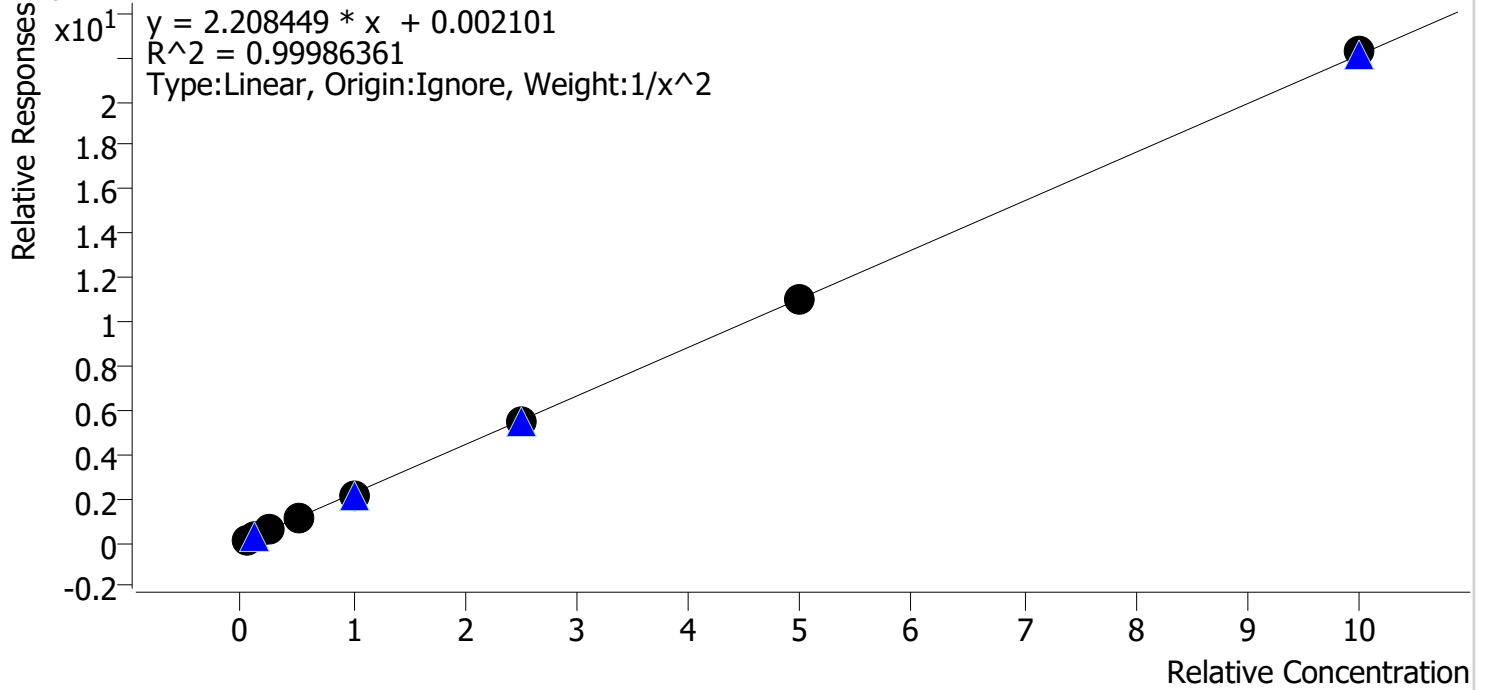


Sample	Level	Enabled	Expected Concentration	Final Concentration	Accuracy
cal 1	1	✓	5.0	4.9	97.2
cal 2	2	✓	10.0	10.2	101.8
cal 3	3	✓	25.0	26.1	104.4
cal 4	4	✓	50.0	53.9	107.8
cal 5	5	✓	100.0	104.9	104.9
cal 6	6	✓	250.0	260.4	104.2
cal 7	7	✓	500.0	475.8	95.2
cal 8	8	✓	1000.0	844.7	84.5

Compound Calibration Report

Batch results D:\MassHunter\Data\2019\am28-27_090619\QuantResults\mdq p1.batch.bin
Last Cal. Update 9/8/2019 8:41 AM
Analyst Name ISP\datastor
Analyte Doxylamine **Internal Standard** Doxylamine-D5

Doxylamine - 8 Levels, 8 Levels Used, 8 Points, 8 Points Used, 4 QCs

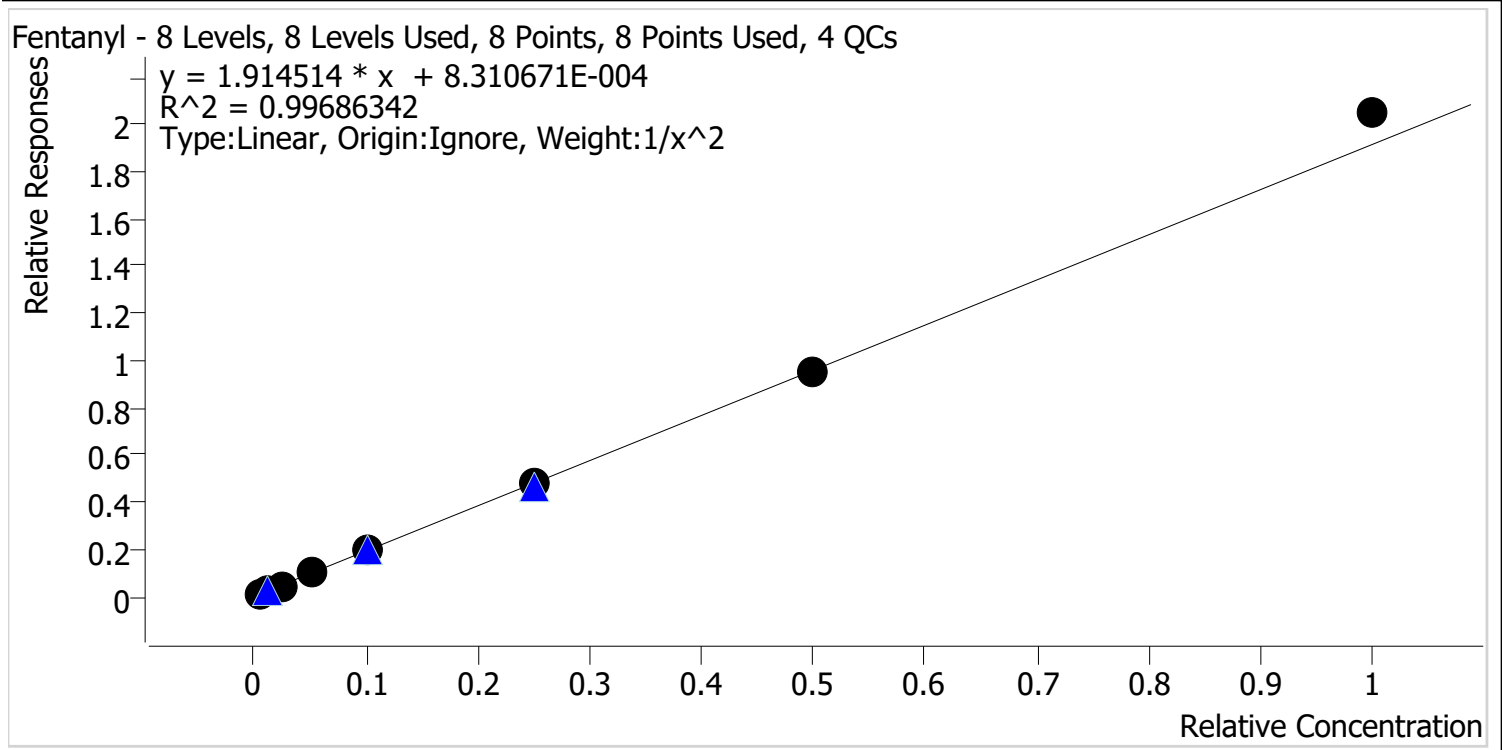


Sample	Level	Enabled	Expected Concentration	Final Concentration	Accuracy
cal 1	1	✓	5.0	5.0	99.7
cal 2	2	✓	10.0	10.0	100.0
cal 3	3	✓	25.0	25.4	101.6
cal 4	4	✓	50.0	50.3	100.5
cal 5	5	✓	100.0	98.2	98.2
cal 6	6	✓	250.0	250.1	100.0
cal 7	7	✓	500.0	496.5	99.3
cal 8	8	✓	1000.0	1007.0	100.7

Compound Calibration Report



Batch results D:\MassHunter\Data\2019\am28-27_090619\QuantResults\mdq p1.batch.bin
Last Cal. Update 9/8/2019 8:41 AM
Analyst Name ISP\datastor
Analyte Fentanyl **Internal Standard** Fentanyl-D5

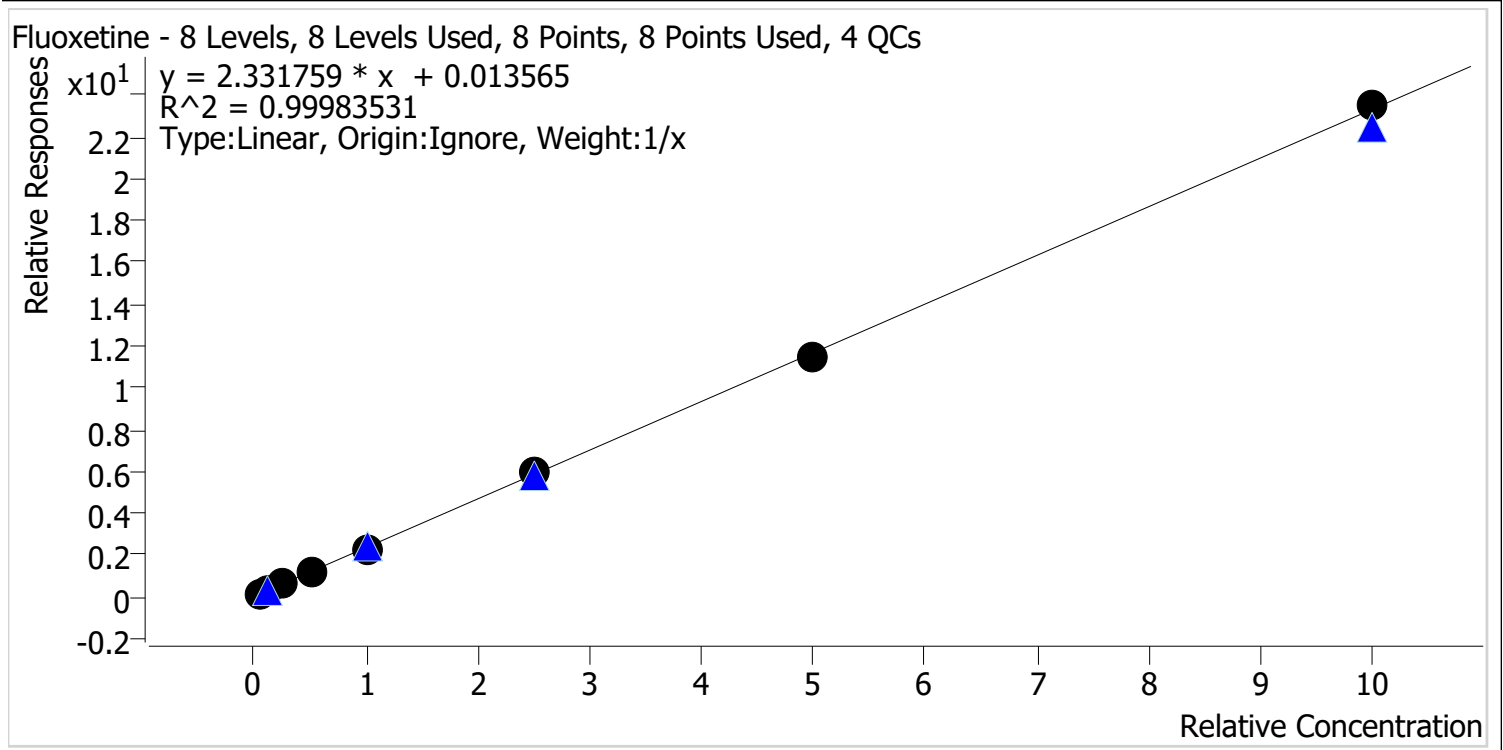


Sample	Level	Enabled	Expected Concentration	Final Concentration	Accuracy
cal 1	1	✓	0.5	0.5	104.4
cal 2	2	✓	1.0	0.9	92.0
cal 3	3	✓	2.5	2.4	96.6
cal 4	4	✓	5.0	5.2	104.0
cal 5	5	✓	10.0	9.8	98.5
cal 6	6	✓	25.0	24.7	98.8
cal 7	7	✓	50.0	49.4	98.8
cal 8	8	✓	100.0	107.0	107.0

Compound Calibration Report



Batch results D:\MassHunter\Data\2019\am28-27_090619\QuantResults\mdq p1.batch.bin
Last Cal. Update 9/8/2019 8:41 AM
Analyst Name ISP\datastor
Analyte Fluoxetine **Internal Standard** Fluoxetine-D6

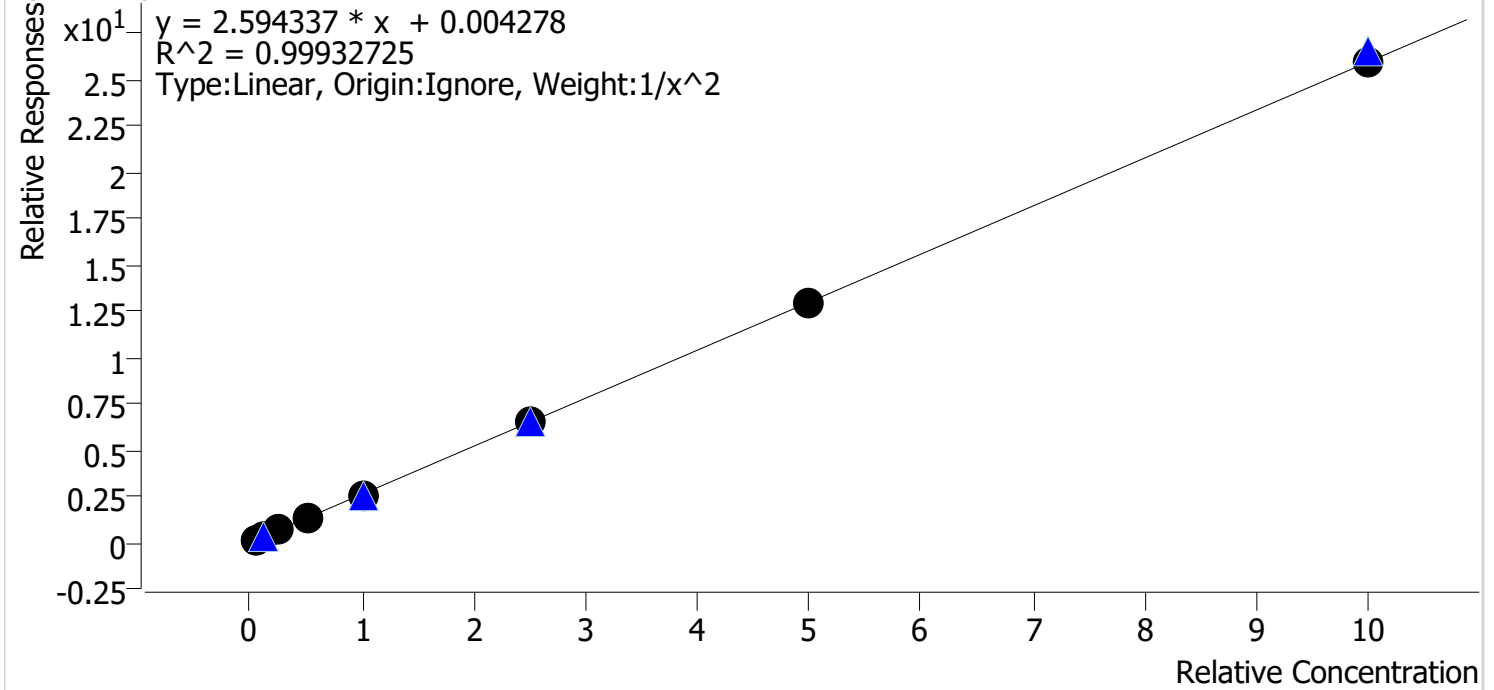


Sample	Level	Enabled	Expected Concentration	Final Concentration	Accuracy
cal 1	1	✓	5.0	5.0	100.8
cal 2	2	✓	10.0	10.0	99.6
cal 3	3	✓	25.0	24.7	98.7
cal 4	4	✓	50.0	51.4	102.7
cal 5	5	✓	100.0	98.6	98.6
cal 6	6	✓	250.0	251.6	100.6
cal 7	7	✓	500.0	491.0	98.2
cal 8	8	✓	1000.0	1007.7	100.8

Compound Calibration Report

Batch results D:\MassHunter\Data\2019\am28-27_090619\QuantResults\mdq p1.batch.bin
Last Cal. Update 9/8/2019 8:41 AM
Analyst Name ISP\datastor
Analyte Hydromorphone **Internal Standard** Hydromorphone-D6

Hydromorphone - 8 Levels, 8 Levels Used, 8 Points, 8 Points Used, 4 QCs

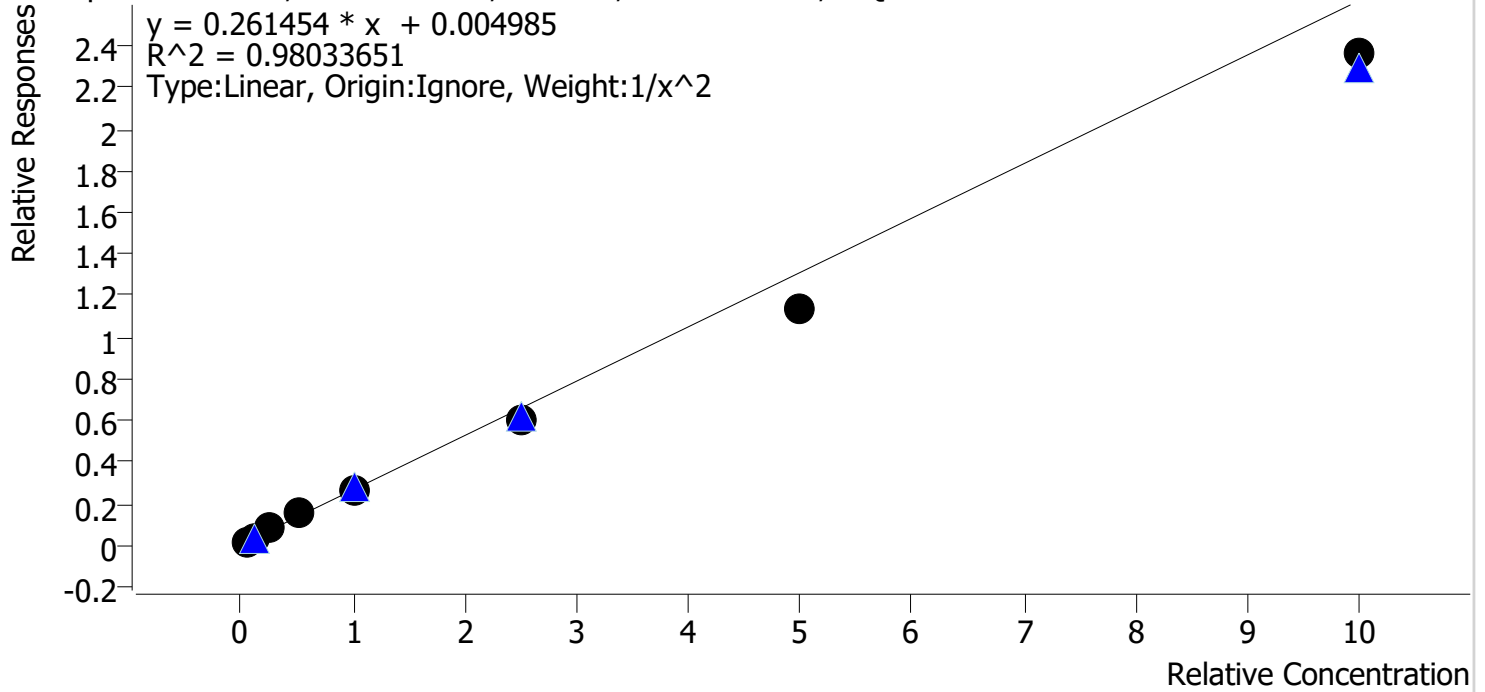


Sample	Level	Enabled	Expected Concentration	Final Concentration	Accuracy
cal 1	1	✓	5.0	5.1	102.0
cal 2	2	✓	10.0	9.5	95.1
cal 3	3	✓	25.0	25.4	101.6
cal 4	4	✓	50.0	50.4	100.8
cal 5	5	✓	100.0	99.9	99.9
cal 6	6	✓	250.0	254.2	101.7
cal 7	7	✓	500.0	494.6	98.9
cal 8	8	✓	1000.0	999.4	99.9

Compound Calibration Report

Batch results D:\MassHunter\Data\2019\am28-27_090619\QuantResults\mdq p1.batch.bin
Last Cal. Update 9/8/2019 8:41 AM
Analyst Name ISP\datastor
Analyte Lorazepam **Internal Standard** Alprazolam-D5

Lorazepam - 8 Levels, 8 Levels Used, 8 Points, 8 Points Used, 4 QCs

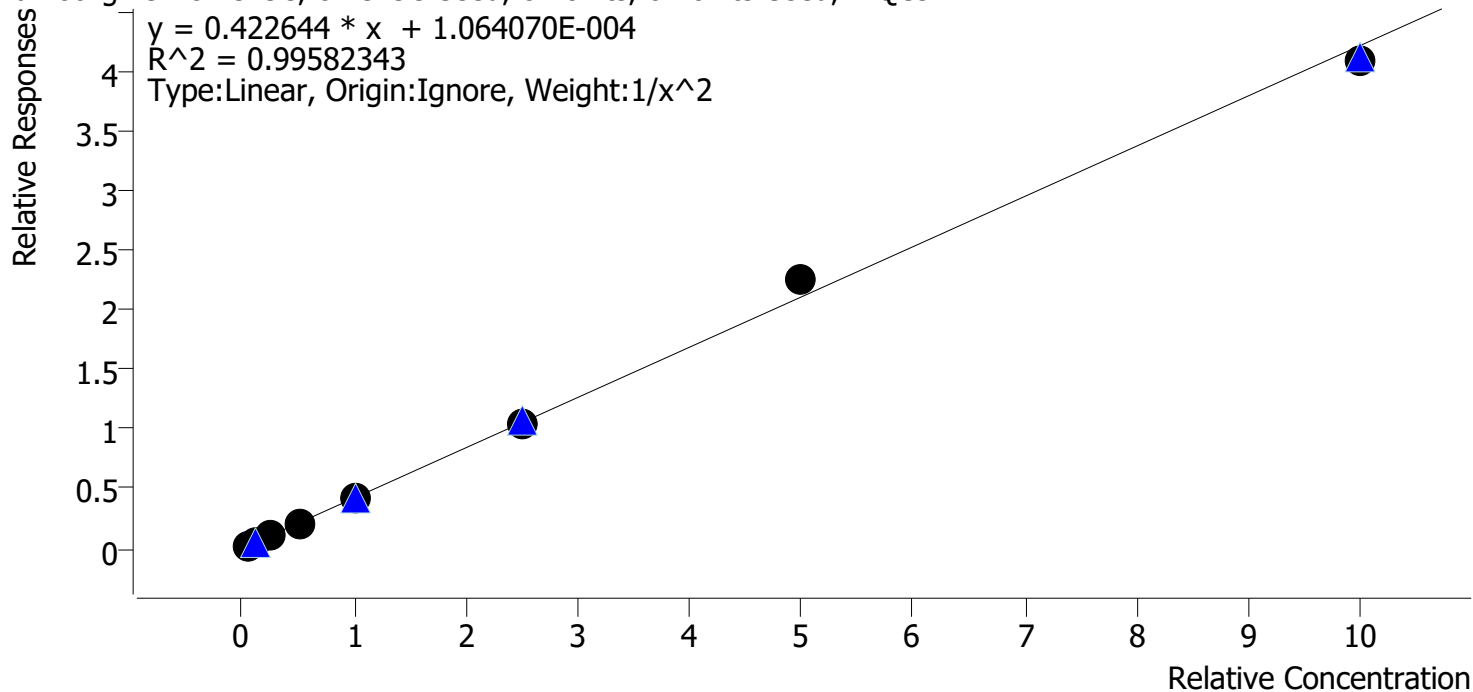


Sample	Level	Enabled	Expected Concentration	Final Concentration	Accuracy
cal 1	1	✓	5.0	4.4	88.8
cal 2	2	✓	10.0	11.5	115.4
cal 3	3	✓	25.0	27.9	111.6
cal 4	4	✓	50.0	57.2	114.3
cal 5	5	✓	100.0	101.6	101.6
cal 6	6	✓	250.0	230.0	92.0
cal 7	7	✓	500.0	430.1	86.0
cal 8	8	✓	1000.0	902.6	90.3

Compound Calibration Report

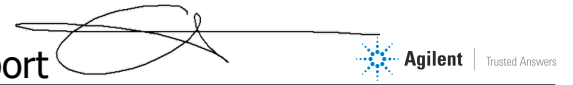
Batch results D:\MassHunter\Data\2019\am28-27_090619\QuantResults\mdq p1.batch.bin
Last Cal. Update 9/8/2019 8:41 AM
Analyst Name ISP\datastor
Analyte Lamotrigine **Internal Standard** Alprazolam-D5

Lamotrigine - 8 Levels, 8 Levels Used, 8 Points, 8 Points Used, 4 QCs



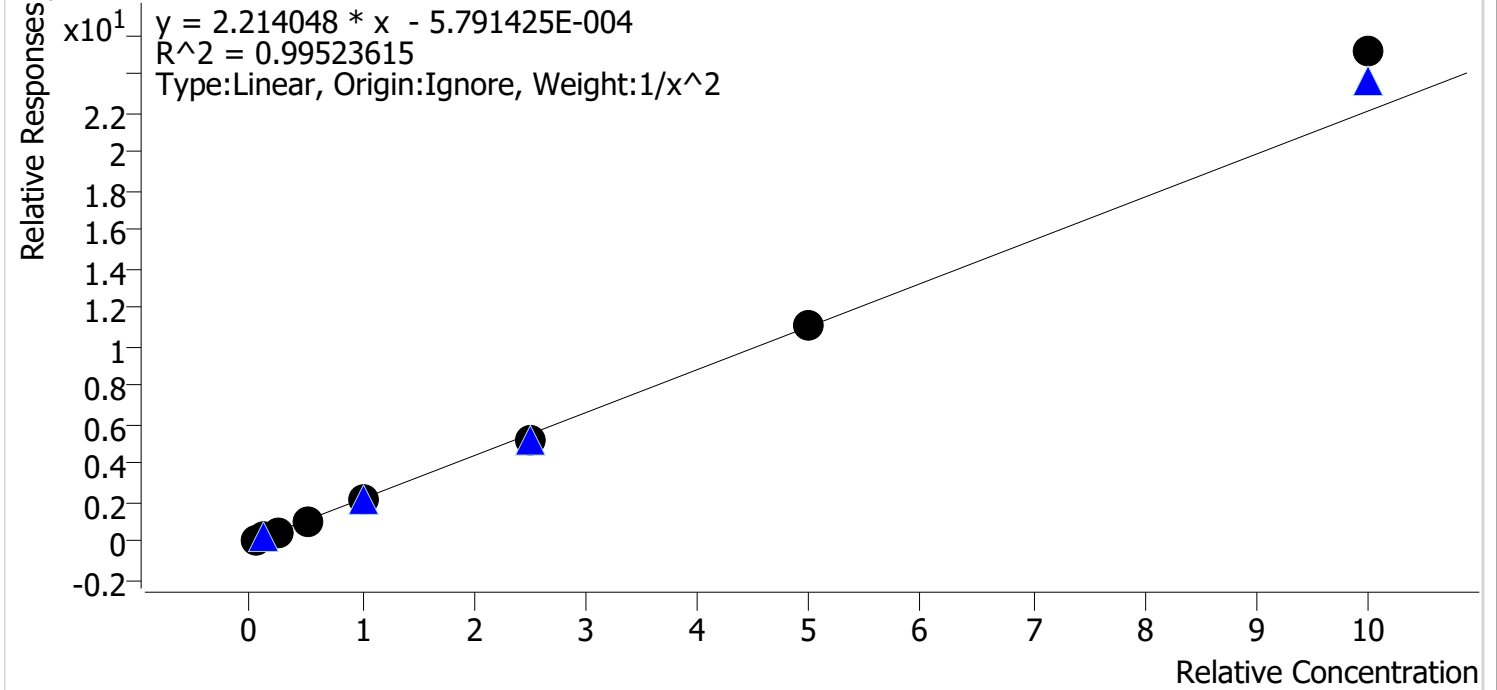
Sample	Level	Enabled	Expected Concentration	Final Concentration	Accuracy
cal 1	1	✓	5.0	5.1	101.8
cal 2	2	✓	10.0	9.5	94.6
cal 3	3	✓	25.0	27.1	108.3
cal 4	4	✓	50.0	46.1	92.2
cal 5	5	✓	100.0	100.2	100.2
cal 6	6	✓	250.0	248.6	99.4
cal 7	7	✓	500.0	534.3	106.9
cal 8	8	✓	1000.0	967.0	96.7

Compound Calibration Report



Batch results D:\MassHunter\Data\2019\am28-27_090619\QuantResults\mdq p1.batch.bin
Last Cal. Update 9/8/2019 8:41 AM
Analyst Name ISP\datastor
Analyte Meprobamate **Internal Standard** Meprobamate-D7

Meprobamate - 8 Levels, 8 Levels Used, 8 Points, 8 Points Used, 4 QCs

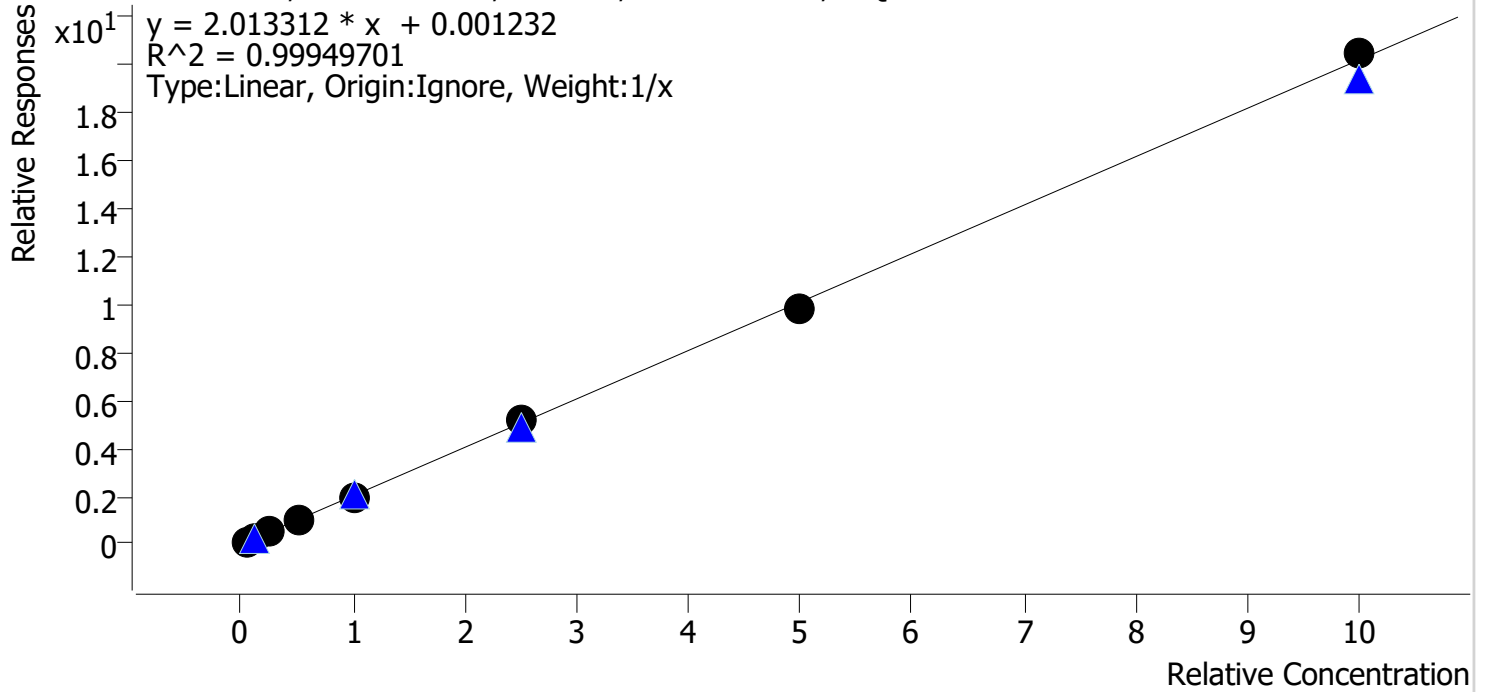


Sample	Level	Enabled	Expected Concentration	Final Concentration	Accuracy
cal 1	1	✓	5.0	5.1	101.6
cal 2	2	✓	10.0	9.9	98.9
cal 3	3	✓	25.0	24.4	97.6
cal 4	4	✓	50.0	48.7	97.4
cal 5	5	✓	100.0	94.4	94.4
cal 6	6	✓	250.0	240.2	96.1
cal 7	7	✓	500.0	501.0	100.2
cal 8	8	✓	1000.0	1137.8	113.8

Compound Calibration Report

Batch results D:\MassHunter\Data\2019\am28-27_090619\QuantResults\mdq p1.batch.bin
Last Cal. Update 9/8/2019 8:41 AM
Analyst Name ISP\datastor
Analyte Methadone **Internal Standard** Methadone-D9

Methadone - 8 Levels, 8 Levels Used, 8 Points, 8 Points Used, 4 QCs

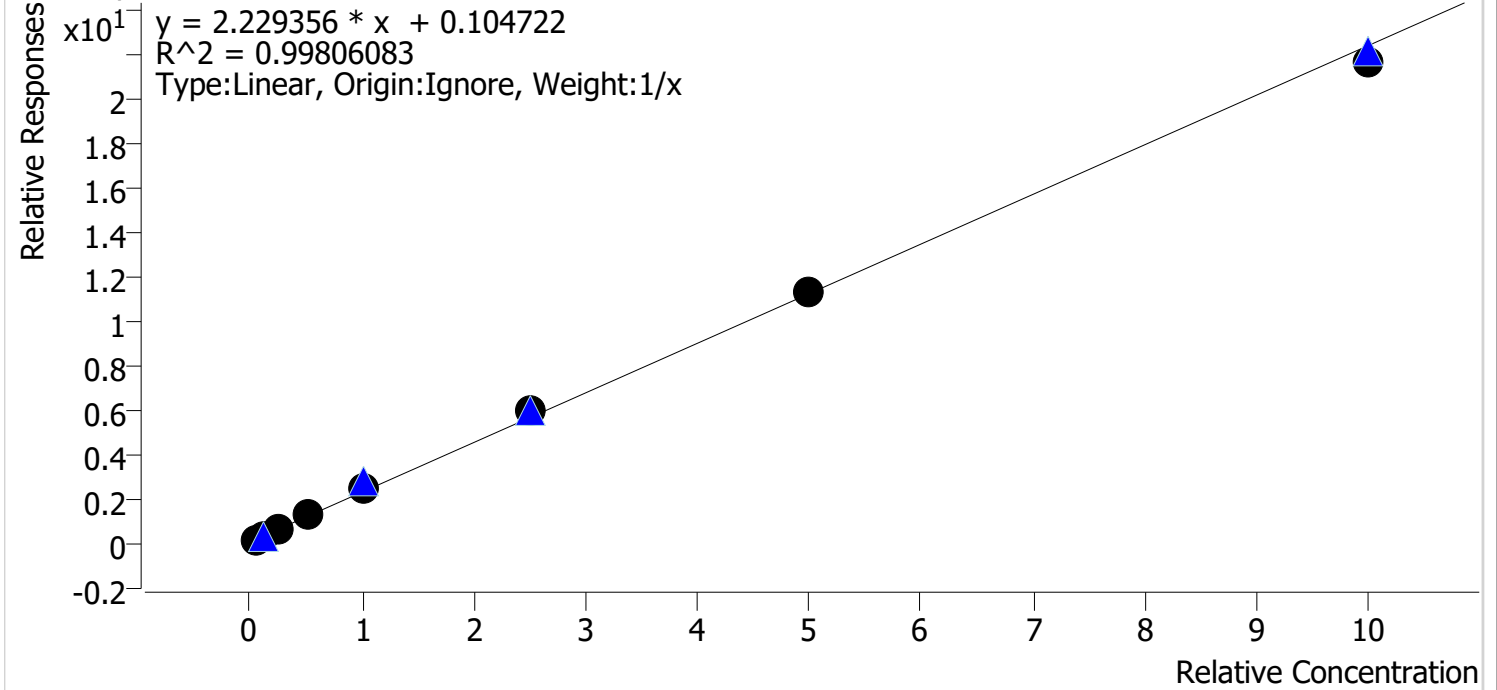


Sample	Level	Enabled	Expected Concentration	Final Concentration	Accuracy
cal 1	1	✓	5.0	5.0	100.6
cal 2	2	✓	10.0	10.2	102.0
cal 3	3	✓	25.0	24.7	98.9
cal 4	4	✓	50.0	49.6	99.2
cal 5	5	✓	100.0	99.4	99.4
cal 6	6	✓	250.0	255.4	102.1
cal 7	7	✓	500.0	482.8	96.6
cal 8	8	✓	1000.0	1013.0	101.3

Compound Calibration Report

Batch results D:\MassHunter\Data\2019\am28-27 090619\QuantResults\mdq p1.batch.bin
Last Cal. Update 9/8/2019 8:41 AM
Analyst Name ISP\datastor
Analyte Methamphetamine **Internal Standard** **Methamphetamine-D11**

Methamphetamine - 8 Levels, 8 Levels Used, 8 Points, 8 Points Used, 4 QCs



Sample	Level	Enabled	Expected Concentration	Final Concentration	Accuracy
cal 1	1	✓	5.0	3.9	77.3
cal 2	2	✓	10.0	9.6	96.0
cal 3	3	✓	25.0	26.6	106.2
cal 4	4	✓	50.0	54.0	108.0
cal 5	5	✓	100.0	108.9	108.9
cal 6	6	✓	250.0	264.4	105.8
cal 7	7	✓	500.0	505.4	101.1
cal 8	8	✓	1000.0	967.3	96.7

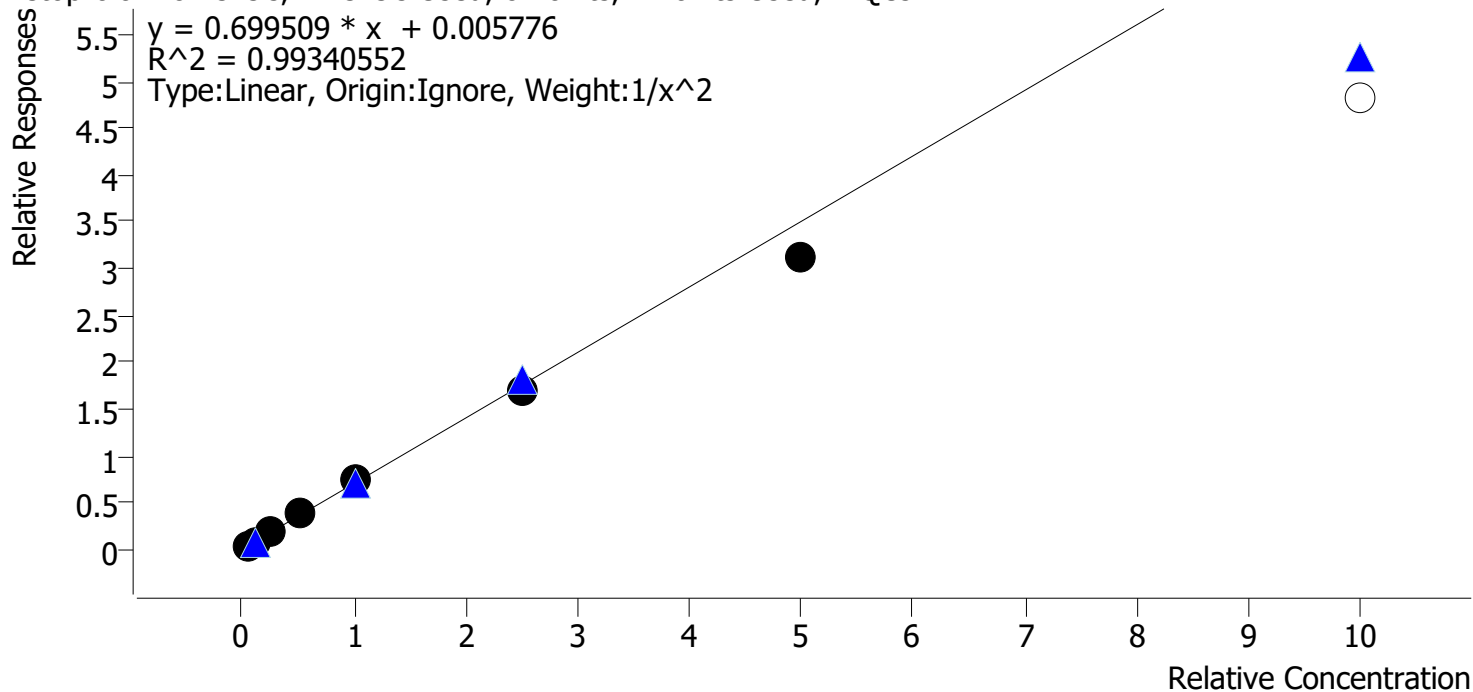
Compound Calibration Report

Batch results D:\MassHunter\Data\2019\am28-27_090619\QuantResults\mdq p1.batch.bin
Last Cal. Update 9/8/2019 8:41 AM
Analyst Name ISP\datastor
Analyte Metoprolol

Internal Standard

Methamphetamine-D11

Metoprolol - 8 Levels, 7 Levels Used, 8 Points, 7 Points Used, 4 QCs

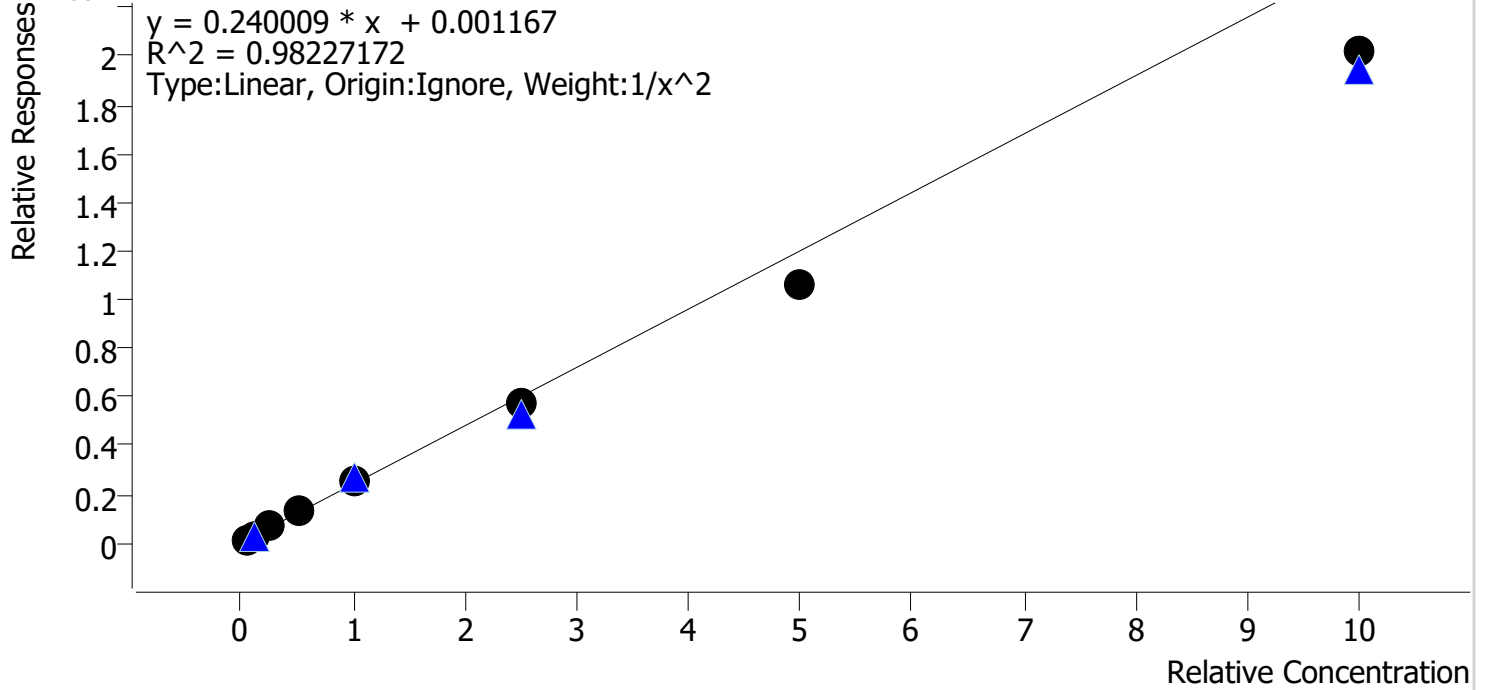


Sample	Level	Enabled	Expected Concentration	Final Concentration	Accuracy
cal 1	1	✓	5.0	4.8	96.2
cal 2	2	✓	10.0	10.7	106.8
cal 3	3	✓	25.0	24.6	98.4
cal 4	4	✓	50.0	52.3	104.5
cal 5	5	✓	100.0	108.0	108.0
cal 6	6	✓	250.0	243.6	97.4
cal 7	7	✓	500.0	442.9	88.6
cal 8	8	✗	1000.0	688.0	68.8

Compound Calibration Report

Batch results D:\MassHunter\Data\2019\am28-27 090619\QuantResults\mdq p1.batch.bin
Last Cal. Update 9/8/2019 8:41 AM
Analyst Name ISP\datastor
Analyte Mitragynine **Internal Standard** Methadone-D9

Mitragynine - 8 Levels, 8 Levels Used, 8 Points, 8 Points Used, 4 QCs

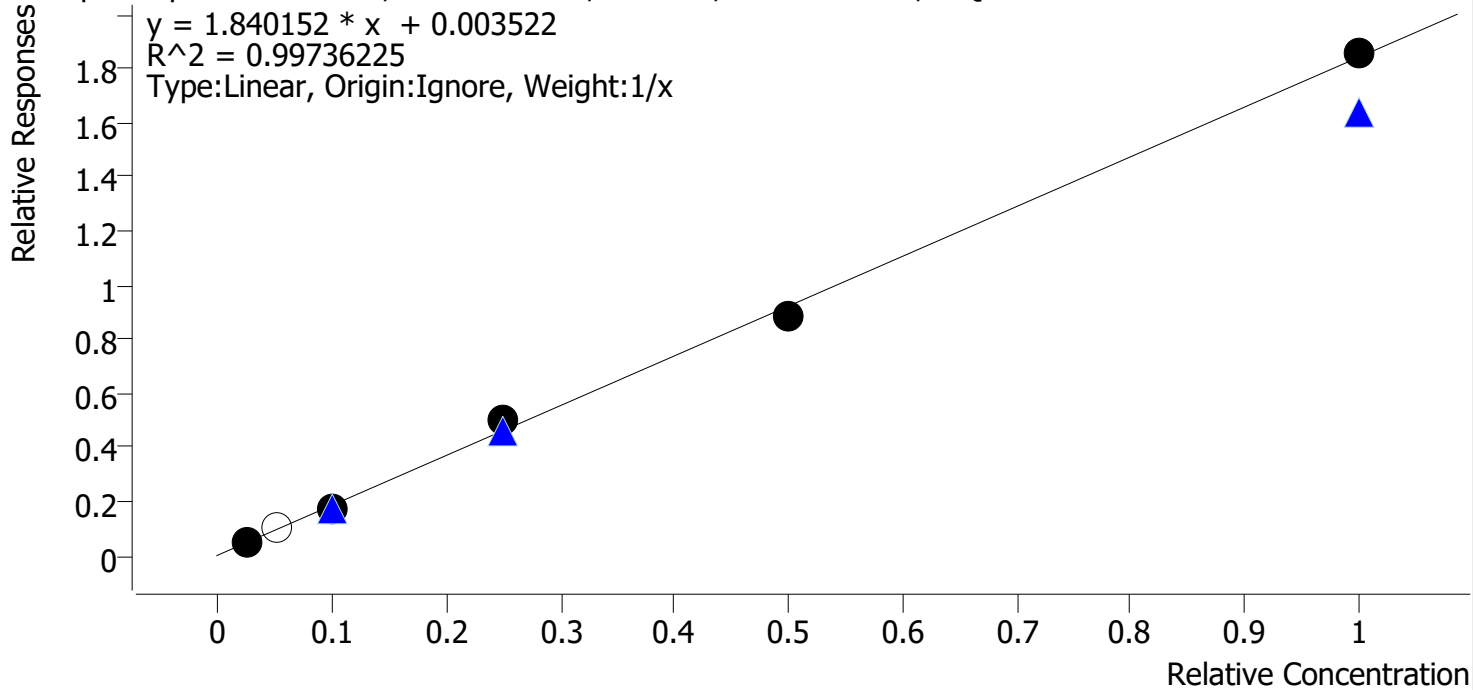


Sample	Level	Enabled	Expected Concentration	Final Concentration	Accuracy
cal 1	1	✓	5.0	4.7	93.1
cal 2	2	✓	10.0	10.4	104.4
cal 3	3	✓	25.0	30.0	119.9
cal 4	4	✓	50.0	53.0	106.1
cal 5	5	✓	100.0	107.4	107.4
cal 6	6	✓	250.0	241.7	96.7
cal 7	7	✓	500.0	441.8	88.4
cal 8	8	✓	1000.0	841.2	84.1

Compound Calibration Report

Batch results D:\MassHunter\Data\2019\am28-27_090619\QuantResults\mdq p1.batch.bin
Last Cal. Update 9/8/2019 8:41 AM
Analyst Name ISP\datastor
Analyte Norbuprenorphine **Internal Standard** Norbuprenorphine-D3

Norbuprenorphine - 6 Levels, 5 Levels Used, 6 Points, 5 Points Used, 3 QCs

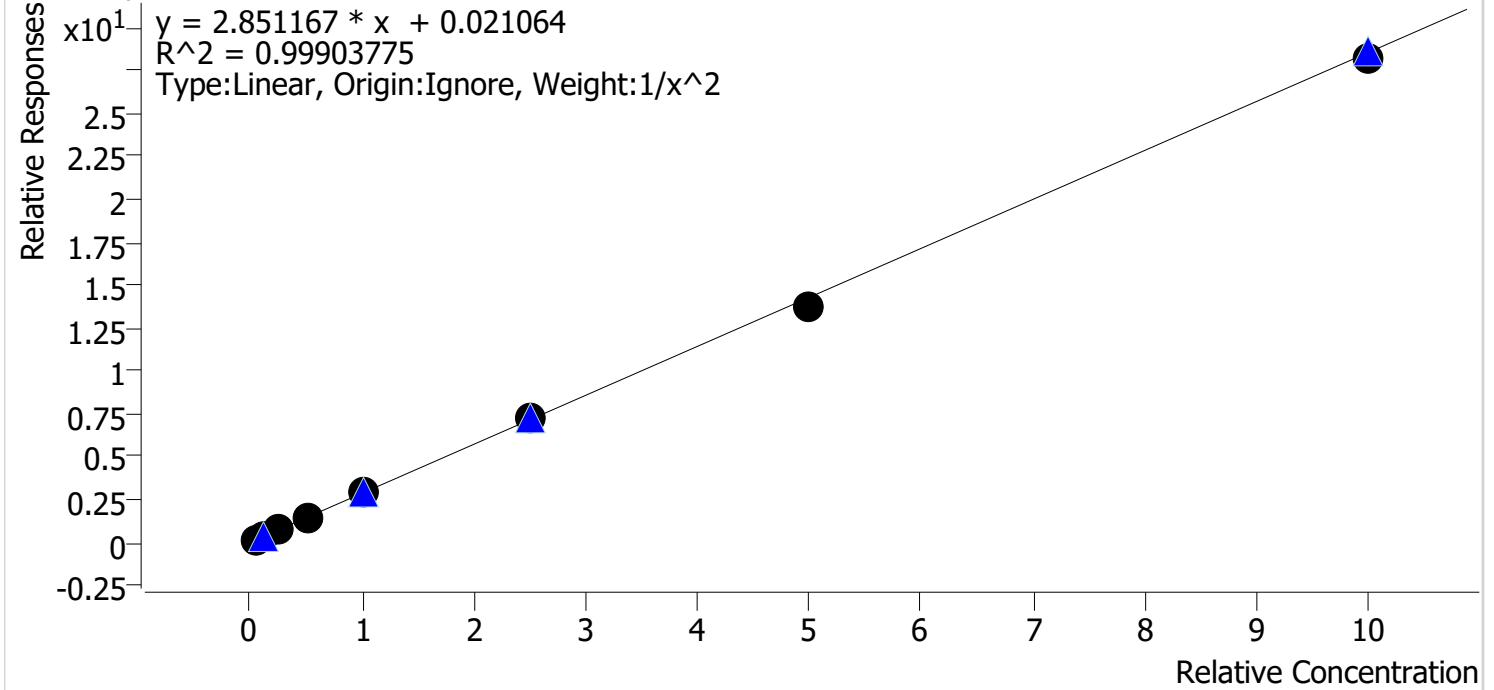


Sample	Level	Enabled	Expected Concentration	Final Concentration	Accuracy
cal 3	3	✓	2.5	2.6	105.4
cal 4	4	✗	5.0	5.8	116.6
cal 5	5	✓	10.0	8.9	89.1
cal 6	6	✓	25.0	27.1	108.5
cal 7	7	✓	50.0	48.1	96.3
cal 8	8	✓	100.0	100.7	100.7

Compound Calibration Report

Batch results D:\MassHunter\Data\2019\am28-27 090619\QuantResults\mdq p1.batch.bin
Last Cal. Update 9/8/2019 8:41 AM
Analyst Name ISP\datastor
Analyte Nordiazepam **Internal Standard** Nordiazepam-D5

Nordiazepam - 8 Levels, 8 Levels Used, 8 Points, 8 Points Used, 4 QCs



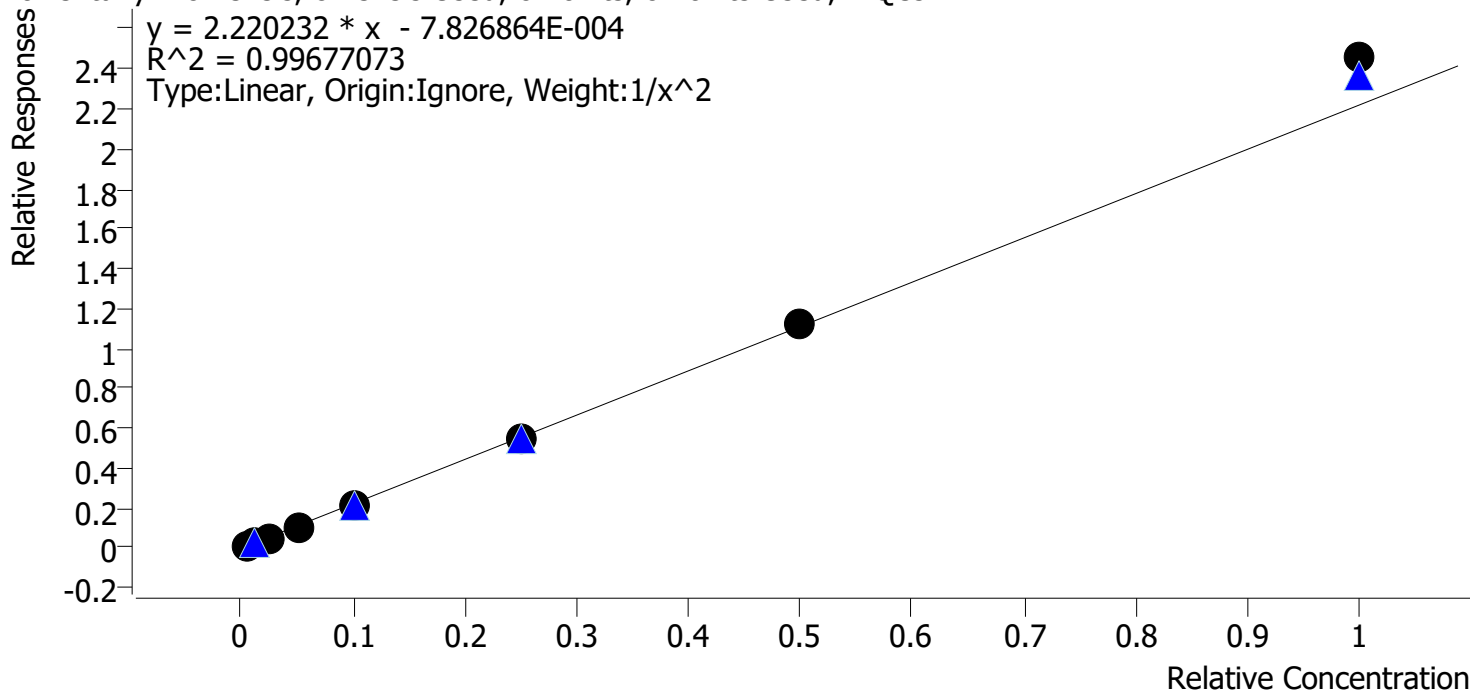
Sample	Level	Enabled	Expected Concentration	Final Concentration	Accuracy
cal 1	1	✓	5.0	5.0	100.4
cal 2	2	✓	10.0	9.7	97.4
cal 3	3	✓	25.0	25.9	103.4
cal 4	4	✓	50.0	50.6	101.2
cal 5	5	✓	100.0	102.8	102.8
cal 6	6	✓	250.0	252.0	100.8
cal 7	7	✓	500.0	477.6	95.5
cal 8	8	✓	1000.0	984.9	98.5

Compound Calibration Report



Batch results D:\MassHunter\Data\2019\am28-27_090619\QuantResults\mdq p1.batch.bin
Last Cal. Update 9/8/2019 8:41 AM
Analyst Name ISP\datastor
Analyte Norfentanyl **Internal Standard** Norfentanyl-D5

Norfentanyl - 8 Levels, 8 Levels Used, 8 Points, 8 Points Used, 4 QCs

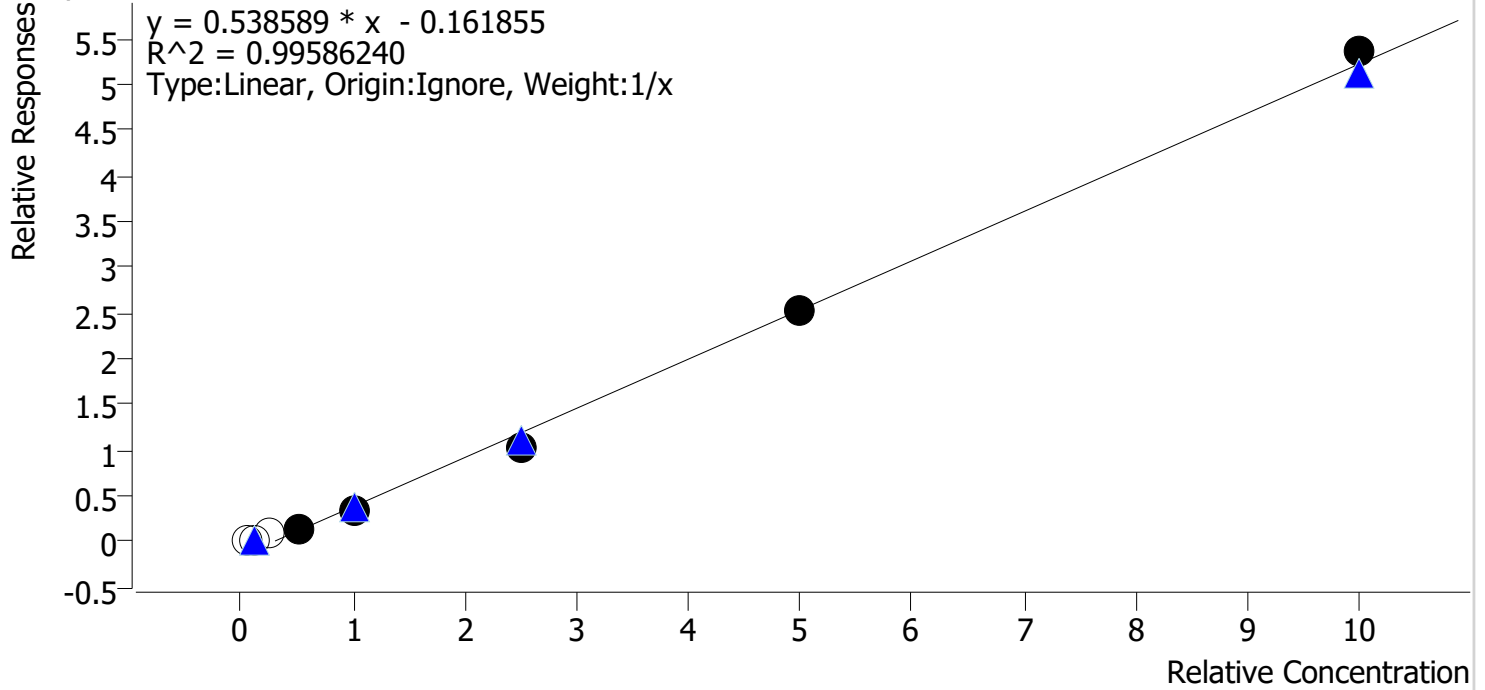


Sample	Level	Enabled	Expected Concentration	Final Concentration	Accuracy
cal 1	1	✓	0.5	0.5	101.9
cal 2	2	✓	1.0	1.0	98.1
cal 3	3	✓	2.5	2.4	97.9
cal 4	4	✓	5.0	4.9	97.2
cal 5	5	✓	10.0	9.5	95.0
cal 6	6	✓	25.0	24.3	97.3
cal 7	7	✓	50.0	51.0	102.0
cal 8	8	✓	100.0	110.7	110.7

Compound Calibration Report

Batch results D:\MassHunter\Data\2019\am28-27_090619\QuantResults\mdq p1.batch.bin
Last Cal. Update 9/8/2019 8:41 AM
Analyst Name ISP\datastor
Analyte Norhydrocodone **Internal Standard** Norhydrocodone-D3

Norhydrocodone - 8 Levels, 5 Levels Used, 8 Points, 5 Points Used, 4 QCs

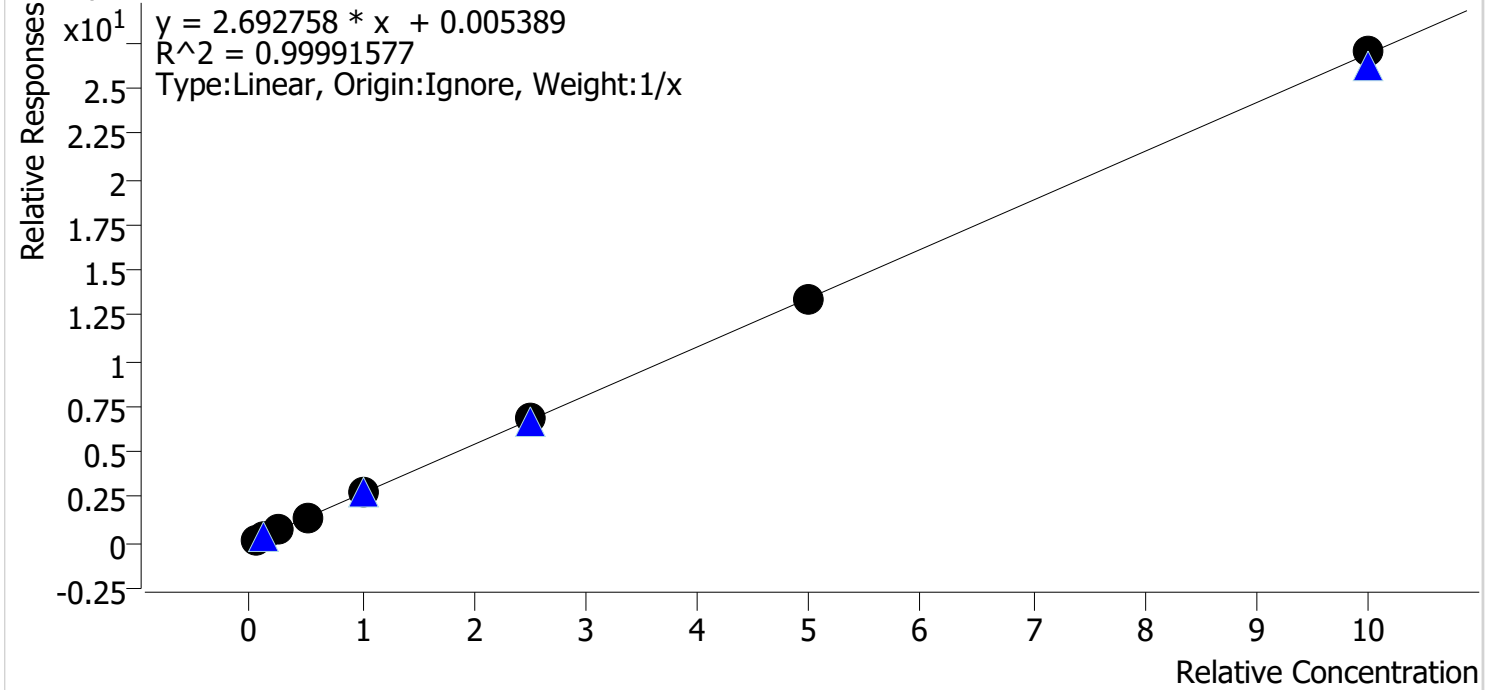


Sample	Level	Enabled	Expected Concentration	Final Concentration	Accuracy
cal 1	1	x	5.0	32.7	654.4
cal 2	2	x	10.0	34.4	343.9
cal 3	3	x	25.0	45.3	181.1
cal 4	4	✓	50.0	57.1	114.3
cal 5	5	✓	100.0	94.0	94.0
cal 6	6	✓	250.0	222.3	88.9
cal 7	7	✓	500.0	501.2	100.2
cal 8	8	✓	1000.0	1025.3	102.5

Compound Calibration Report

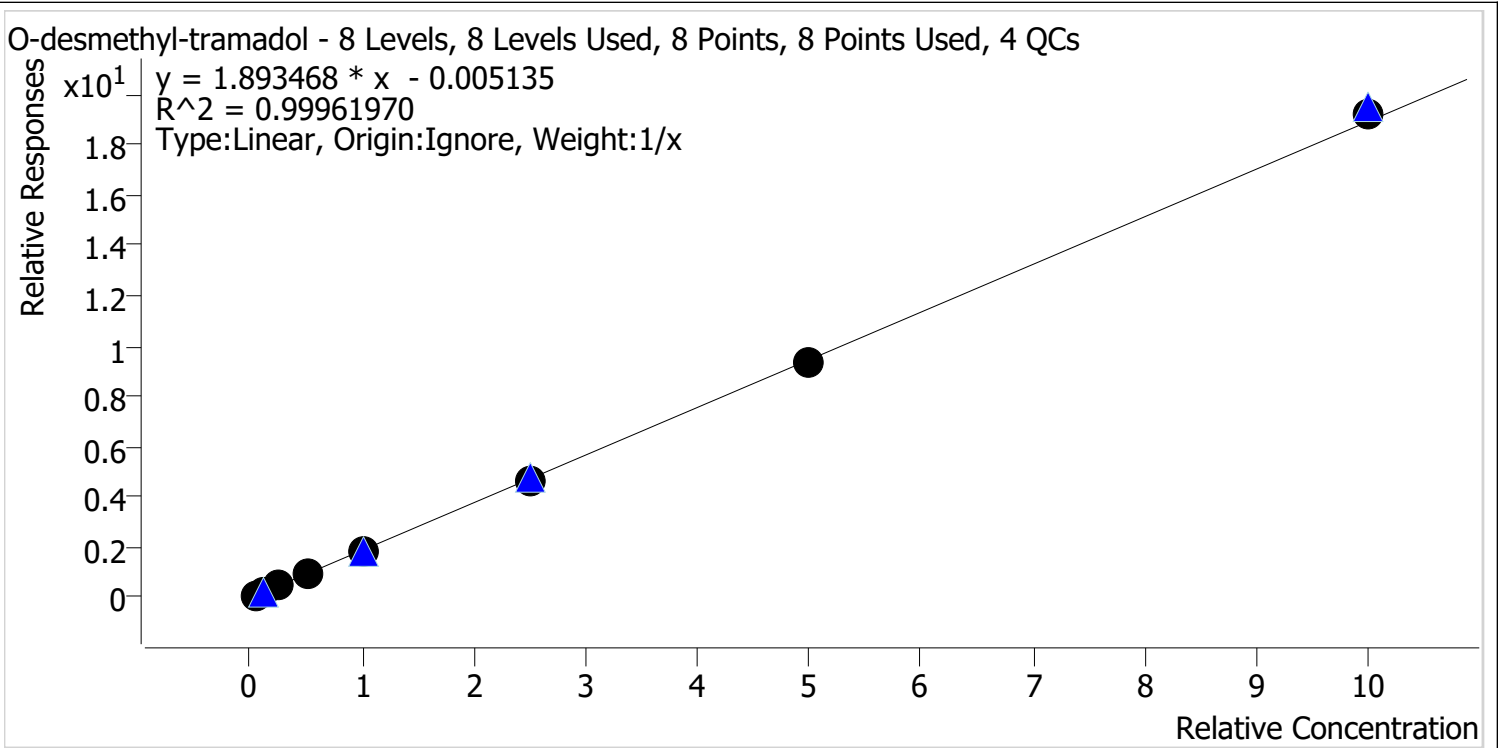
Batch results D:\MassHunter\Data\2019\am28-27 090619\QuantResults\mdq p1.batch.bin
Last Cal. Update 9/8/2019 8:41 AM
Analyst Name ISP\datastor
Analyte Noroxycodone **Internal Standard** Noroxycodone-D3

Noroxycodone - 8 Levels, 8 Levels Used, 8 Points, 8 Points Used, 4 QCs



Sample	Level	Enabled	Expected Concentration	Final Concentration	Accuracy
cal 1	1	✓	5.0	4.9	98.6
cal 2	2	✓	10.0	10.0	100.1
cal 3	3	✓	25.0	24.8	99.2
cal 4	4	✓	50.0	51.5	103.0
cal 5	5	✓	100.0	99.6	99.6
cal 6	6	✓	250.0	250.8	100.3
cal 7	7	✓	500.0	493.8	98.8
cal 8	8	✓	1000.0	1004.6	100.5

Batch results	D:\MassHunter\Data\2019\am28-27 090619\QuantResults\mdq p1.batch.bin		
Last Cal. Update	9/8/2019 8:41 AM		
Analyst Name	ISP\datastor		
Analyte	O-desmethyl-tramadol	Internal Standard	O-desmethyl-tramadol-D6

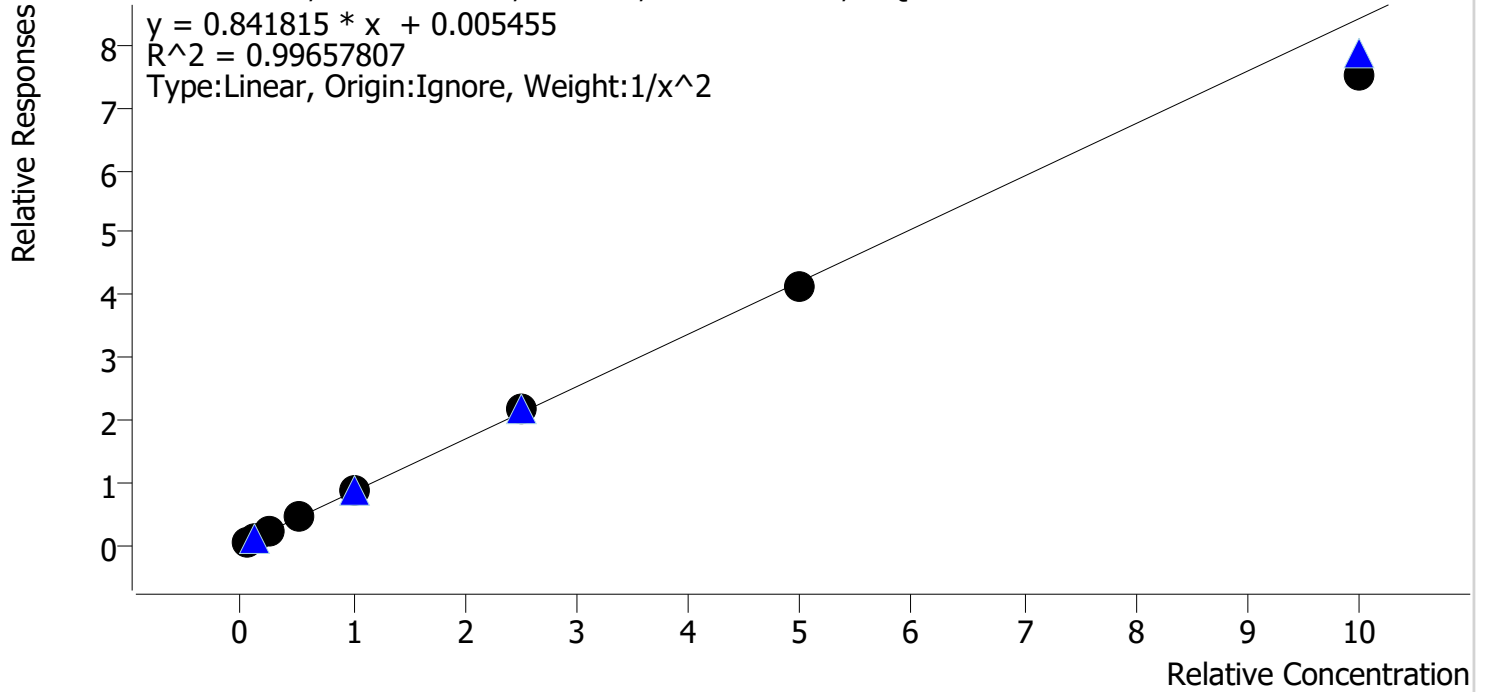


Sample	Level	Enabled	Expected Concentration	Final Concentration	Accuracy
cal 1	1	✓	5.0	5.4	108.1
cal 2	2	✓	10.0	10.1	101.4
cal 3	3	✓	25.0	24.3	97.0
cal 4	4	✓	50.0	49.9	99.9
cal 5	5	✓	100.0	94.9	94.9
cal 6	6	✓	250.0	245.5	98.2
cal 7	7	✓	500.0	495.0	99.0
cal 8	8	✓	1000.0	1014.9	101.5

Compound Calibration Report

Batch results D:\MassHunter\Data\2019\am28-27_090619\QuantResults\mdq p1.batch.bin
Last Cal. Update 9/8/2019 8:41 AM
Analyst Name ISP\datastor
Analyte Phentermine **Internal Standard** Phentermine-D5

Phentermine - 8 Levels, 8 Levels Used, 8 Points, 8 Points Used, 4 QCs



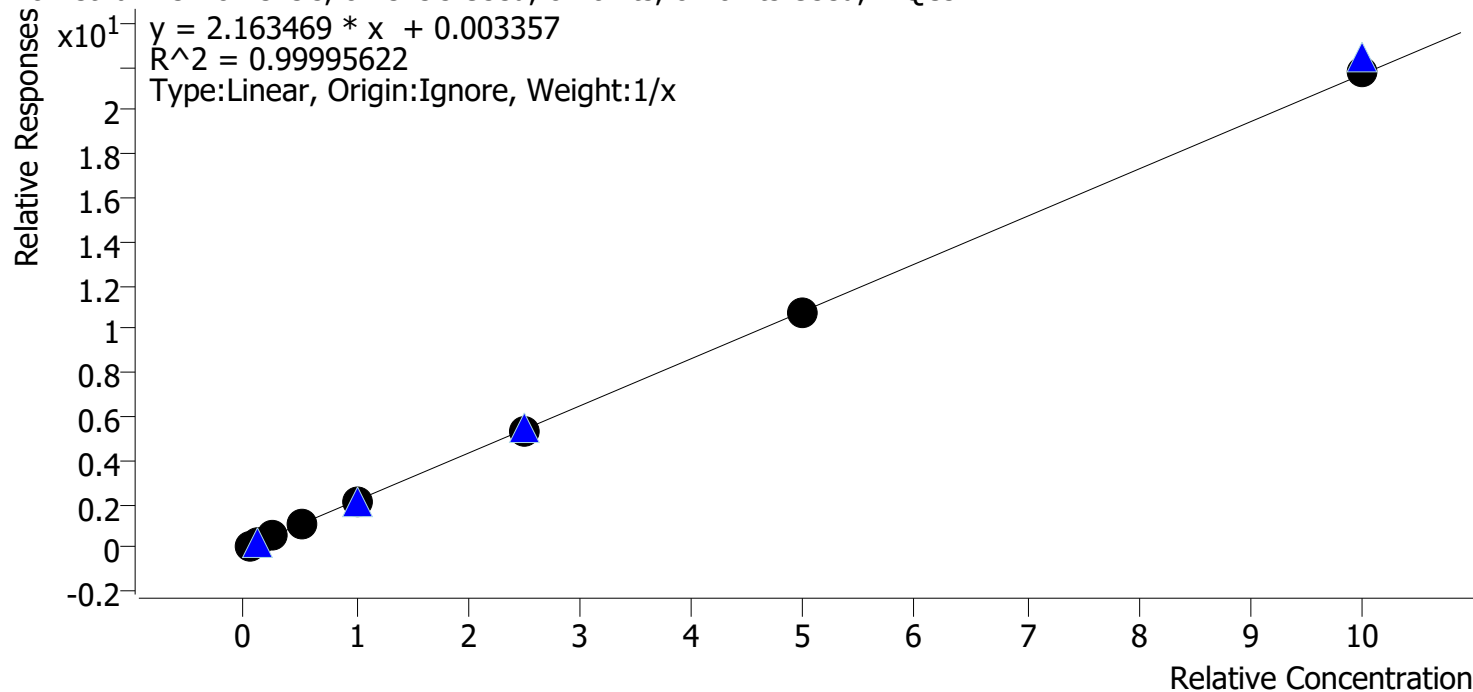
Sample	Level	Enabled	Expected Concentration	Final Concentration	Accuracy
cal 1	1	✓	5.0	5.0	99.4
cal 2	2	✓	10.0	9.8	97.9
cal 3	3	✓	25.0	26.4	105.6
cal 4	4	✓	50.0	51.5	103.0
cal 5	5	✓	100.0	103.8	103.8
cal 6	6	✓	250.0	256.3	102.5
cal 7	7	✓	500.0	490.9	98.2
cal 8	8	✓	1000.0	894.5	89.5

Compound Calibration Report



Batch results D:\MassHunter\Data\2019\am28-27_090619\QuantResults\mdq p1.batch.bin
Last Cal. Update 9/8/2019 8:41 AM
Analyst Name ISP\datastor
Analyte Promethazine **Internal Standard** Promethazine-D3

Promethazine - 8 Levels, 8 Levels Used, 8 Points, 8 Points Used, 4 QCs

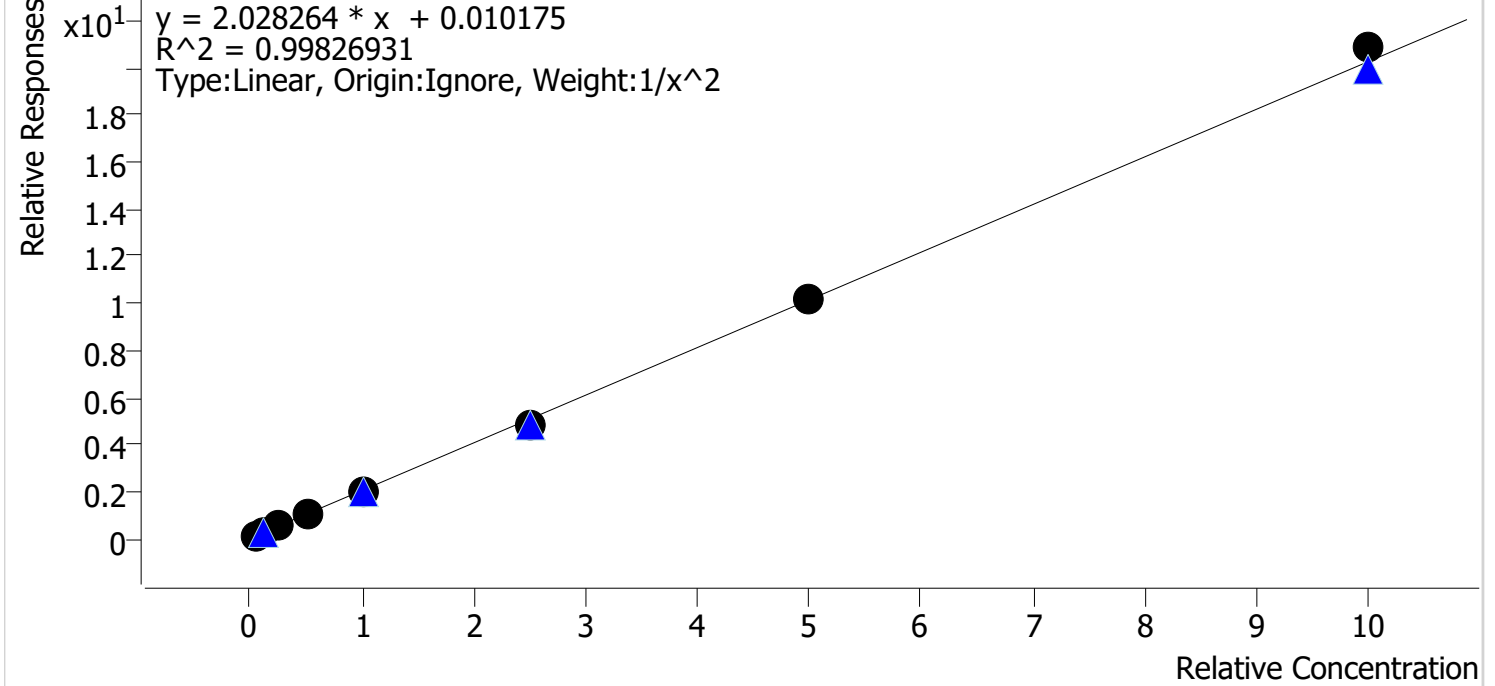


Sample	Level	Enabled	Expected Concentration	Final Concentration	Accuracy
cal 1	1	✓	5.0	4.8	96.8
cal 2	2	✓	10.0	10.2	101.9
cal 3	3	✓	25.0	25.3	101.2
cal 4	4	✓	50.0	50.2	100.5
cal 5	5	✓	100.0	100.2	100.2
cal 6	6	✓	250.0	250.0	100.0
cal 7	7	✓	500.0	495.2	99.0
cal 8	8	✓	1000.0	1004.1	100.4

Compound Calibration Report

Batch results D:\MassHunter\Data\2019\am28-27 090619\QuantResults\mdq p1.batch.bin
Last Cal. Update 9/8/2019 8:41 AM
Analyst Name ISP\datastor
Analyte Sertraline **Internal Standard** Sertraline-D3

Sertraline - 8 Levels, 8 Levels Used, 8 Points, 8 Points Used, 4 QCs

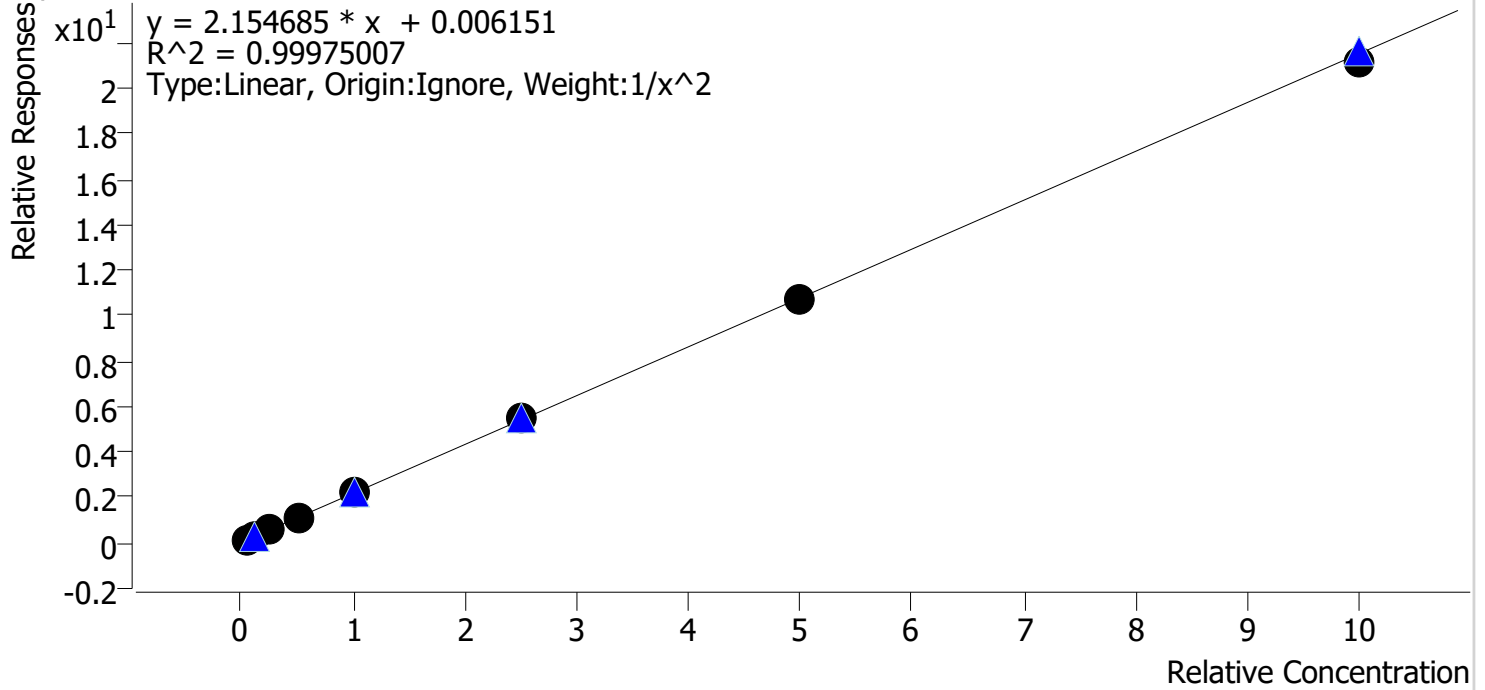


Sample	Level	Enabled	Expected Concentration	Final Concentration	Accuracy
cal 1	1	✓	5.0	4.9	97.5
cal 2	2	✓	10.0	10.6	105.7
cal 3	3	✓	25.0	24.5	98.0
cal 4	4	✓	50.0	50.5	101.0
cal 5	5	✓	100.0	100.4	100.4
cal 6	6	✓	250.0	234.4	93.7
cal 7	7	✓	500.0	503.0	100.6
cal 8	8	✓	1000.0	1029.5	103.0

Compound Calibration Report

Batch results D:\MassHunter\Data\2019\am28-27_090619\QuantResults\mdq p1.batch.bin
Last Cal. Update 9/8/2019 8:41 AM
Analyst Name ISP\datastor
Analyte Zolpidem **Internal Standard** Zolpidem-D6

Zolpidem - 8 Levels, 8 Levels Used, 8 Points, 8 Points Used, 4 QCs



Sample	Level	Enabled	Expected Concentration	Final Concentration	Accuracy
cal 1	1	✓	5.0	5.0	100.1
cal 2	2	✓	10.0	10.0	100.0
cal 3	3	✓	25.0	24.6	98.5
cal 4	4	✓	50.0	50.8	101.7
cal 5	5	✓	100.0	100.5	100.5
cal 6	6	✓	250.0	254.5	101.8
cal 7	7	✓	500.0	497.5	99.5
cal 8	8	✓	1000.0	979.2	97.9

AM #28 Multi-Drug Quant. Results

Batch results

D:\MassHunter\Data\2019\am28-27 090619\QuantResults\mdq p1.batch.bin

Calibration Last Update

9/9/2019 1:46:04 PM

Instrument

69679

Type

Cal

Acq. Method

mdq p1 cda 121818.m

Sample Position

P2-A1

Injection Volume

2

Acq. Date-Time

9/6/2019 6:17:49 PM

Sample Info.

Data File

cal 1.d

Sample

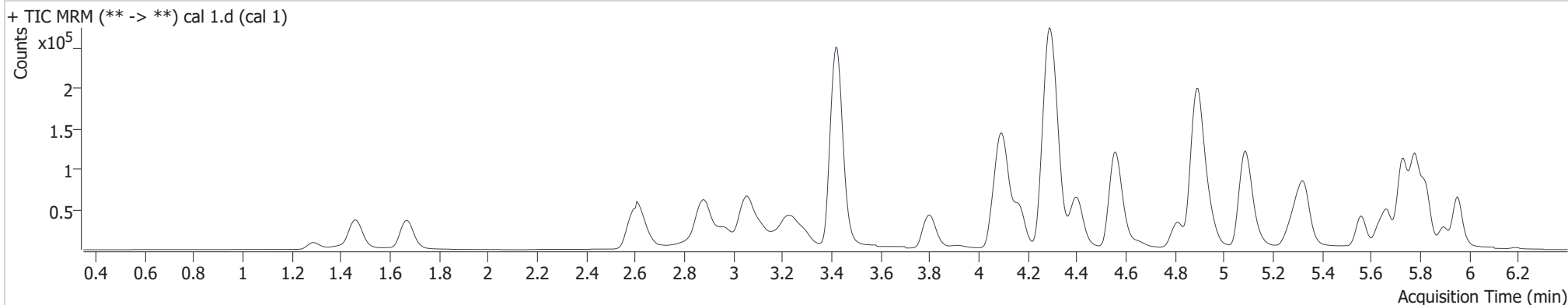
cal 1

Operator

Anne Nord

Comment

Sample Chromatogram



Name	RT	Resp.	S/N	Ratio	S/N	ISTD Resp.	Final Conc.
6-MAM	3.194	851	1192.4	74.7	769.17	43859	0.529 ng/ml
7-aminoclonazepam	4.313	15789	2838.7	83.2	5435.1	131796	4.774 ng/ml
a-hydroxyalprazolam	5.714	1883	446.97	47.0	1204.6	18988	4.811 ng/ml
alpha-PVP	4.407	20412	1059.1	54.6	401.03	176357	5.236 ng/ml
Alprazolam	5.787	24053	1126.9	113.8	922.25	172294	5.267 ng/ml
Amphetamine	3.127	26974	334.62	54.4	219.81	96549	4.847 ng/ml
Benzoyllecgonine	3.931	1354	1515.6	6.6 Low	36.644	9132	4.457 ng/ml
Bupropion	4.830	16344	431.23	48.1	319.21	98150	4.983 ng/ml
Carisoprodol	5.738	22675	2499.5	59.8	50.723	212650	5.014 ng/ml
Citalopram	5.266	6047	125.07	44.8	65.335	50487	4.813 ng/ml
Clonazepam	5.633	6529	1389.6	31.7	3261.3	21054	4.813 ng/ml
Cocaine	4.307	24285	64.716	44.7	12033	358631	5.035 ng/ml
Codeine	2.653	5446	187.66	109.6	521.43	55149	4.939 ng/ml
Cyclobenzaprine	5.640	4926	5233.5	10.2	42.65	38417	5.010 ng/ml
Dextromethorphan	5.306	3715	161.55	70.6	135.01	32882	5.090 ng/ml
Dextrorphan	4.166	5922	58.499	220.1	18856	137212	5.018 ng/ml
Diazepam	5.957	15392	1161.9	85.1	626.41	143354	5.049 ng/ml
Dihydrocodeine	2.632	14483	4167.3	63.9	2209	158422	4.862 ng/ml

cal 1

Generated at 1:46 PM on 9/9/2019



AM #28 Multi-Drug Quant. Results

Name	RT	Resp.	S/N	Ratio	S/N	ISTD Resp.	Final Conc.
Diphenhydramine	5.332	16999	118.73	34.4	228.87	172515	5.520 ng/ml
Doxylamine	4.574	43980	1099.6	99.5	1163.6	391876	4.987 ng/ml
EDDP	5.300	4102	3336.4	223.1	148.05	89336	5.157 ng/ml
Fentanyl	5.127	480	62.992	80.4	247.14	44305	0.522 ng/ml
Fluoxetine	5.715	5639	245.83	9.7	787.8	43033	5.038 ng/ml
Hydrocodone	3.079	12427	21.948	37.5	158.94	146126	4.737 ng/ml
Hydromorphone	1.678	15557	914.5	74.4	4736.5	113865	5.101 ng/ml
Ketamine	4.092	27119	6608.8	38.1	136.19	255848	4.980 ng/ml
Lamotrigine	4.340	3724	124.63	91.5	286.3	172294	5.090 ng/ml
Lorazepam	5.761	2860	78.947	55.7	15.598	172294	4.441 ng/ml
Meprobamate	4.962	11507	63.722	29.9	365.2	102861	5.079 ng/ml
Methadone	5.669	9041	299.93	50.7	60.348	88215	5.029 ng/ml
Methamphetamine	3.289	26527	72.874	38.3	43.06	138940	3.867 ng/ml
Metoprolol	4.369	5478	150.97	99.5	660.68	138940	4.811 ng/ml
Mirtazapine	4.655	11996	631.76	48.7	489.16	50487	5.165 ng/ml
Mitragynine	5.260	1089	886.45	36.9	355.85	88215	4.656 ng/ml
Morphine	1.297	3139	17855	22.7	1407.9	8080	5.021 ng/ml
Nordiazepam	5.902	8732	11537	54.6	4401.8	53187	5.020 ng/ml
Norfentanyl	4.127	3450	131.08	44.7	24.596	327747	0.509 ng/ml
Norhydrocodone	3.130	564	1134.2	22.8 Low	103.04	39264	32.720 ng/ml
Noroxycodone	2.982	10925	390.47	42.4	186.94	79118	4.928 ng/ml
O-desmethyl-tramadol	3.425	79290	2937.3	6.3	40.717	815713	5.405 ng/ml
Oxazepam	5.768	4804	88.727	77.5	34.529	53816	4.589 ng/ml
Oxycodone	2.905	26442	1025.4	29.4	390.26	257859	4.757 ng/ml
Oxymorphone	1.465	17772	17.965	46.0	29087	140374	4.325 ng/ml
Phentermine	3.833	7199	23.393	5.5	19.12	152166	4.972 ng/ml
Promethazine	5.563	7356	443.92	35.3	103.53	68035	4.842 ng/ml
Quetiapine	5.555	10138	560.08	58.9	8460.3	26544	5.060 ng/ml
Sertraline	5.777	2919	3546.2	99.8	2649.4	26752	4.877 ng/ml
Temazepam	5.829	15955	224.53	32.0	20.151	166554	5.050 ng/ml
Tramadol	4.288	58926	5117.8	3.4	48.971	576218	4.943 ng/ml
Trazodone	5.142	7691	53.214	74.1	3112	66284	5.118 ng/ml
Venlafaxine	5.083	30681	1251.9	38.8	138.89	311411	5.289 ng/ml
Zolpidem	4.909	74046	4014.5	30.5	839.72	649710	5.004 ng/ml

AM #28 Multi-Drug Quant. Results

Batch results

D:\MassHunter\Data\2019\am28-27 090619\QuantResults\mdq p1.batch.bin

Calibration Last Update

9/9/2019 1:46:04 PM

Instrument

69679

Type

Cal

Acq. Method

mdq p1 cda 121818.m

Sample Position

P2-B1

Injection Volume

2

Acq. Date-Time

9/6/2019 6:28:39 PM

Sample Info.

Data File

cal 2.d

Sample

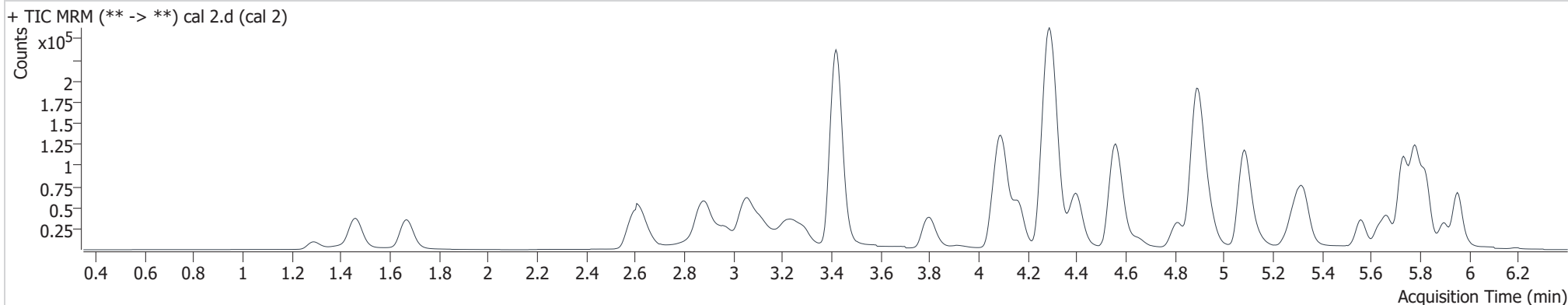
cal 2

Operator

Anne Nord

Comment

Sample Chromatogram



Name	RT	Resp.	S/N	Ratio	S/N	ISTD Resp.	Final Conc.
6-MAM	3.188	1231	258.14	77.4	186.88	37767	0.905 ng/ml
7-aminoclonazepam	4.313	24330	5372.5	83.4	47.672	104784	10.315 ng/ml
a-hydroxyalprazolam	5.709	3360	396.78	55.9	772.8	17274	10.373 ng/ml
alpha-PVP	4.407	35353	2102.6	54.5	588.07	157846	10.018 ng/ml
Alprazolam	5.787	43181	1852.9	108.4	634.21	155429	10.197 ng/ml
Amphetamine	3.127	45910	490.9	52.5	252.59	85342	10.137 ng/ml
Benzoyllecgonine	3.936	2161	4336.7	7.3	162.25	7062	10.087 ng/ml
Buprenorphine	5.739	164	9.2081 Low	16.9	35.884	5149	0.509 ng/ml
Bupropion	4.830	23205	588.61	51.5	212.28	80760	10.123 ng/ml
Carisoprodol	5.738	38781	31257	61.3	271.83	192160	9.838 ng/ml
Citalopram	5.261	8881	435.53	44.8	791.5	39411	9.776 ng/ml
Clonazepam	5.633	12300	10456	33.6	1032	19965	10.562 ng/ml
Cocaine	4.302	43384	62719	42.8	2265.4	325049	10.111 ng/ml
Codeine	2.658	9190	8590.4	106.4	170.91	47212	10.073 ng/ml
Cyclobenzaprine	5.640	5163	3590.2	9.9	77.706	20594	9.986 ng/ml
Dextromethorphan	5.306	4435	126.04	73.7	1058.3	21601	9.586 ng/ml
Dextrorphan	4.161	10843	10723	214.7	112.4	127107	10.005 ng/ml
Diazepam	5.957	27495	3010.8	85.1	1862.9	129754	10.142 ng/ml

cal 2

Generated at 1:46 PM on 9/9/2019

AM #28 Multi-Drug Quant. Results

Name	RT	Resp.	S/N	Ratio	S/N	ISTD Resp.	Final Conc.
Dihydrocodeine	2.632	23747	1521.2	66.1	249.44	134846	10.177 ng/ml
Diphenhydramine	5.327	22277	278.7	34.7	538.72	129435	9.710 ng/ml
Doxylamine	4.574	79304	216.89	96.7	1717.9	355756	9.999 ng/ml
EDDP	5.295	7432	317.28	246.8	443.46	92041	9.397 ng/ml
Fentanyl	5.122	435	67.175	85.5	56.78	23606	0.920 ng/ml
Fluoxetine	5.715	5310	838.98	9.7	584.29	21610	9.957 ng/ml
Hydrocodone	3.079	21855	631.65	40.4	493.25	128654	10.090 ng/ml
Hydromorphone	1.678	23689	1153.2	75.0	736.75	94384	9.509 ng/ml
Ketamine	4.087	45954	190.68	37.2	196.44	225277	9.960 ng/ml
Lamotrigine	4.335	6229	240.48	86.8	373.07	155429	9.456 ng/ml
Lorazepam	5.761	5464	164.7	60.5	39.584	155429	11.538 ng/ml
Meprobamate	4.957	19600	22029	29.0	228.9	89760	9.888 ng/ml
Methadone	5.669	12852	196.16	45.9	6689.5	62222	10.198 ng/ml
Methamphetamine	3.289	35764	16.743	45.9	26.216	112237	9.596 ng/ml
Metoprolol	4.364	9035	1446.5	98.5	987.86	112237	10.682 ng/ml
Mirtazapine	4.655	18629	409.33	48.7	584.35	39411	9.993 ng/ml
Mitragynine	5.255	1631	447.59	37.3	424.77	62222	10.439 ng/ml
Morphine	1.297	4990	153.39	24.5	7887	6594	9.896 ng/ml
Nordiazepam	5.902	15590	35506	61.2	7236.2	52177	9.741 ng/ml
Norfentanyl	4.127	5978	110	42.6	11.785	284593	0.981 ng/ml
Norhydrocodone	3.115	802	34.239	18.4 Low	604.4	34295	34.395 ng/ml
Noroxycodone	2.982	19083	240.53	37.4	161.05	69400	10.011 ng/ml
O-desmethyl-tramadol	3.425	131506	7198.3	6.5	665.28	703564	10.143 ng/ml
Oxazepam	5.768	9691	196.91	73.7	47.681	53156	10.242 ng/ml
Oxycodone	2.905	43656	807.96	29.8	947.19	223666	9.699 ng/ml
Oxymorphone	1.465	31191	4.7447E+05	43.9	712	124055	9.703 ng/ml
Phentermine	3.833	11881	52.087	5.4	34.329	135190	9.792 ng/ml
Promethazine	5.563	8553	1179	31.8	39.583	38218	10.189 ng/ml
Quetiapine	5.555	17246	1270.9	61.6	1252.1	24040	9.920 ng/ml
Sertraline	5.782	3098	134.5	105.6	2841.6	13800	10.566 ng/ml
Temazepam	5.829	31766	937.78	30.1	32.327	165043	9.952 ng/ml
Tramadol	4.288	98919	11184	3.4	16.867	509886	10.120 ng/ml
Trazodone	5.142	11947	538.83	76.9	362.38	50941	9.934 ng/ml
Venlafaxine	5.083	54578	2009.4	38.7	146.73	281495	10.169 ng/ml
Zolpidem	4.909	125927	1.378E+05	30.9	30582	568064	10.003 ng/ml

AM #28 Multi-Drug Quant. Results

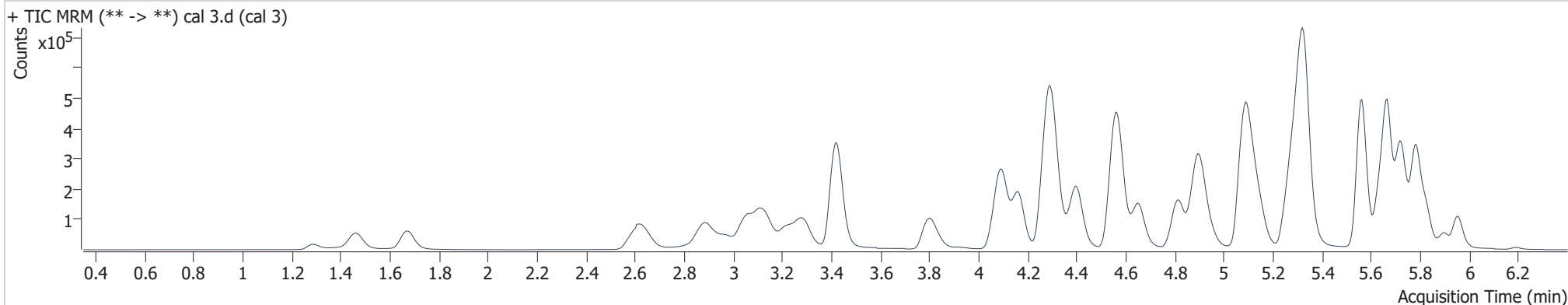
Batch results
Calibration Last Update

D:\MassHunter\Data\2019\am28-27 090619\QuantResults\mdq p1.batch.bin
9/9/2019 1:46:04 PM

Instrument 69679
Type Cal
Acq. Method mdq p1 cda 121818.m
Sample Position P2-C1
Injection Volume 2
Acq. Date-Time 9/6/2019 6:39:27 PM
Sample Info.

Data File cal 3.d
Sample cal 3
Operator Anne Nord
Comment

Sample Chromatogram



Name	RT	Resp.	S/N	Ratio	S/N	ISTD Resp.	Final Conc.
6-MAM	3.188	4220	10410	75.0	733.8	50186	2.373 ng/ml
7-aminoclonazepam	4.313	67627	34017	84.2	4939.1	117562	27.230 ng/ml
a-hydroxyalprazolam	5.709	7775	398	57.9	5152.6	15963	27.437 ng/ml
alpha-PVP	4.407	210641	8879	52.3	3389.7	370430	25.248 ng/ml
Alprazolam	5.787	110479	5221	111.3	820.1	163180	24.437 ng/ml
Amphetamine	3.127	289826	1930.1	54.4	250.1	211953	27.108 ng/ml
Benzoyllecgonine	3.936	5907	38.437	8.2	101.34	8202	24.868 ng/ml
Buprenorphine	5.739	3407	2403.8	17.6	455.07	50399	2.162 ng/ml
Bupropion	4.824	202918	2781.8	58.4	1915.9	322413	24.674 ng/ml
Carisoprodol	5.738	95760	45553	59.9	272.07	187193	25.534 ng/ml
Citalopram	5.266	172537	7476.1	46.9	140.74	317750	24.710 ng/ml
Clonazepam	5.633	29787	622.79	32.6	201.6	21054	25.570 ng/ml
Cocaine	4.302	176100	1.9236E+05	43.7	38313	542136	24.883 ng/ml
Codeine	2.653	28574	78.551	106.6	685.9	58624	25.744 ng/ml
Cyclobenzaprine	5.635	194587	2.3035E+05	10.8	668.3	320258	24.486 ng/ml
Dextromethorphan	5.306	123381	3803.3	76.8	4088.8	233876	25.275 ng/ml
Dextrorphan	4.161	75840	61102	215.0	1.5038E+05	353462	25.299 ng/ml



AM #28 Multi-Drug Quant. Results

Name	RT	Resp.	S/N	Ratio	S/N	ISTD Resp.	Final Conc.
Diazepam	5.957	76663	1227.2	87.1	5756.8	151196	24.522 ng/ml
Dihydrocodeine	2.627	72650	512.62	66.6	13815	168971	26.111 ng/ml
Diphenhydramine	5.332	497404	26290	35.0	5867.8	1137235	24.816 ng/ml
Doxylamine	4.569	505856	5.2834E+05	96.0	1.1891E+05	898716	25.392 ng/ml
EDDP	5.295	87340	1678.6	237.9	3514.2	420433	24.853 ng/ml
Fentanyl	5.127	17945	2340	73.7	14843	381274	2.415 ng/ml
Fluoxetine	5.721	217994	1.2977E+05	8.7	24460	370117	24.678 ng/ml
Hydrocodone	3.079	73991	945.48	41.5	20.731	184611	24.660 ng/ml
Hydromorphone	1.678	77147	1288.4	74.3	3357.8	116287	25.407 ng/ml
Ketamine	4.087	164988	17015	37.6	700.12	325231	25.373 ng/ml
Lamotrigine	4.335	18690	492.69	86.7	958.19	163180	27.075 ng/ml
Lorazepam	5.761	12715	327.78	54.4	85.59	163180	27.896 ng/ml
Meprobamate	4.957	50856	16673	29.7	31.791	94219	24.405 ng/ml
Methadone	5.669	329416	2518.9	48.3	3126	660348	24.717 ng/ml
Methamphetamine	3.289	196913	276.83	37.2	442.27	282582	26.560 ng/ml
Metoprolol	4.364	50256	1734.6	95.9	4570.2	282582	24.599 ng/ml
Mirtazapine	4.655	330709	17436	47.3	8204.5	317750	21.660 ng/ml
Mitragynine	5.255	48269	5106.6	36.5	6729.4	660348	29.969 ng/ml
Morphine	1.292	14724	51992	23.9	1480.1	7963	24.355 ng/ml
Norbuprenorphine	5.034	518	516.31	91.0	570.93	9963	2.636 ng/ml
Nordiazepam	5.902	44376	43568	59.3	12640	58519	25.858 ng/ml
Norfentanyl	4.127	29350	37968	40.2	123.75	548225	2.447 ng/ml
Norhydrocodone	3.125	4763	210.06	41.8	113.5	58104	45.271 ng/ml
Noroxycodone	2.982	64128	1273.3	42.1	443.26	95227	24.809 ng/ml
O-desmethyl-tramadol	3.425	390206	1371.5	6.5	1096.5	859000	24.262 ng/ml
Oxazepam	5.768	20115	181.36	75.1	124.1	48368	24.432 ng/ml
Oxycodone	2.905	138091	1560.2	28.9	1188.8	279919	25.607 ng/ml
Oxymorphone	1.465	86501	2.761E+05	43.5	7344.9	139072	25.671 ng/ml
Phentermine	3.833	84441	207.07	4.8	135.88	370730	26.409 ng/ml
Promethazine	5.563	342330	1.1525E+05	31.9	6261.1	621679	25.297 ng/ml
Quetiapine	5.555	209132	1.5193E+05	60.3	1.5552E+05	127616	23.270 ng/ml
Sertraline	5.782	121267	15726	103.1	69189	239096	24.504 ng/ml
Temazepam	5.829	86493	1433.4	30.1	88.296	180093	24.546 ng/ml
Tramadol	4.288	421103	30355	3.6	83.398	901021	25.546 ng/ml
Trazodone	5.142	214337	1739.5	78.2	33051	380338	23.306 ng/ml
Venlafaxine	5.083	355576	1111.5	38.9	1212.3	743837	24.709 ng/ml
Zolpidem	4.909	389180	3.1785E+05	32.0	12248	725235	24.620 ng/ml

AM #28 Multi-Drug Quant. Results

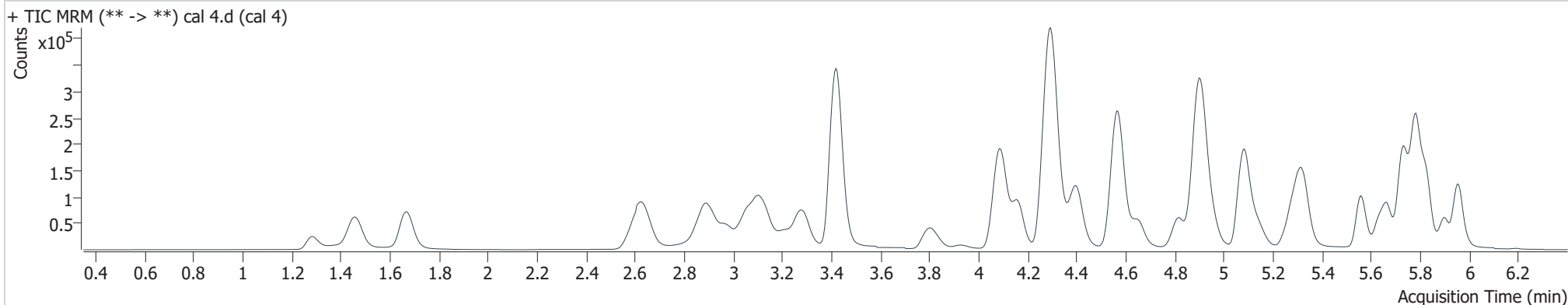
Batch results
Calibration Last Update

D:\MassHunter\Data\2019\am28-27 090619\QuantResults\mdq p1.batch.bin
9/9/2019 1:46:04 PM

Instrument 69679
Type Cal
Acq. Method mdq p1 cda 121818.m
Sample Position P2-D1
Injection Volume 2
Acq. Date-Time 9/6/2019 6:50:14 PM
Sample Info.

Data File cal 4.d
Sample cal 4
Operator Anne Nord
Comment

Sample Chromatogram



Name	RT	Resp.	S/N	Ratio	S/N	ISTD Resp.	Final Conc.
6-MAM	3.183	6024	2909.7	71.2	7138.1	33358	5.124 ng/ml
7-aminoclonazepam	4.307	117245	5950.2	83.0	7422.5	102473	55.280 ng/ml
a-hydroxyalprazolam	5.709	14479	415.1	59.9	10761	16442	50.393 ng/ml
alpha-PVP	4.407	157933	1060.7	52.6	742.54	140650	49.737 ng/ml
Alprazolam	5.787	193304	820.56	109.5	626.35	141024	49.181 ng/ml
Amphetamine	3.122	196394	2150.5	52.7	491.17	74033	53.406 ng/ml
Benzoyllecgonine	3.931	10341	13751	7.8	109.18	7396	49.072 ng/ml
Buprenorphine	5.739	890	75.504	14.7	336.1	6370	5.493 ng/ml
Bupropion	4.824	93845	1107.3	57.4	741.47	76622	50.004 ng/ml
Carisoprodol	5.738	171081	93912	59.0	527.72	169232	50.839 ng/ml
Citalopram	5.261	50707	3793.1	44.6	85.012	45288	51.820 ng/ml
Clonazepam	5.633	53796	6168.4	32.5	59.602	18880	52.529 ng/ml
Cocaine	4.302	188151	2551.2	43.4	28947	287630	50.306 ng/ml
Codeine	2.653	39756	134.32	108.8	25259	41243	51.254 ng/ml
Cyclobenzaprine	5.640	34197	16832	10.6	2064.1	26752	51.737 ng/ml
Dextromethorphan	5.306	28029	562.45	78.2	560.44	26837	50.443 ng/ml
Dextrorphan	4.161	49511	1.3219E+05	212.9	1.2169E+05	115745	50.525 ng/ml

AM #28 Multi-Drug Quant. Results

Name	RT	Resp.	S/N	Ratio	S/N	ISTD Resp.	Final Conc.
Diazepam	5.957	121366	4958	86.1	2518.4	116104	50.747 ng/ml
Dihydrocodeine	2.627	107175	1611.6	66.6	10826	122761	53.922 ng/ml
Diphenhydramine	5.327	131639	507.16	34.0	1038.5	152851	48.953 ng/ml
Doxylamine	4.569	374268	8036.5	97.0	13080	336490	50.269 ng/ml
EDDP	5.295	39175	12962	238.6	16443	95535	49.477 ng/ml
Fentanyl	5.127	3284	23.268	68.9	2483	32709	5.201 ng/ml
Fluoxetine	5.715	38492	471.74	8.7	3011.7	31782	51.358 ng/ml
Hydrocodone	3.074	96957	1040.1	31.8	471.62	116315	51.968 ng/ml
Hydromorphone	1.673	116190	1992.5	74.8	5869	88548	50.413 ng/ml
Ketamine	4.087	205390	71059	37.7	732.66	200764	51.582 ng/ml
Lamotrigine	4.329	27482	252.16	87.6	388.48	141024	46.084 ng/ml
Lorazepam	5.761	21776	1079	58.5	126.47	141024	57.153 ng/ml
Meprobamate	4.957	86264	54053	30.8	1999.8	80016	48.719 ng/ml
Methadone	5.664	74342	1765.8	47.8	1655.1	74339	49.610 ng/ml
Methamphetamine	3.284	143389	732.59	38.8	309.51	109546	54.017 ng/ml
Metoprolol	4.364	40685	1530.1	97.0	1806.2	109546	52.269 ng/ml
Mirtazapine	4.650	106922	1432	47.3	1008	45288	48.771 ng/ml
Mitragynine	5.255	9549	69.828	37.3	318.93	74339	53.033 ng/ml
Morphine	1.287	25053	73964	23.0	40634	6233	53.086 ng/ml
Norbuprenorphine	5.039	157	137.53	67.8 Low	82.044	1420	5.830 ng/ml
Nordiazepam	5.902	68453	15400	60.7	13183	46780	50.584 ng/ml
Norfentanyl	4.122	29362	4428.5	39.6	328.2	274055	4.861 ng/ml
Norhydrocodone	3.120	4504	391.51	43.3	17.539	30867	57.144 ng/ml
Noroxycodone	2.977	84057	580.21	41.2	428.5	60403	51.479 ng/ml
O-desmethyl-tramadol	3.425	588699	20482	6.5	867.42	626021	49.936 ng/ml
Oxazepam	5.768	36814	410.13	70.7	337.32	42519	51.769 ng/ml
Oxycodone	2.900	194538	2011.6	29.3	3259.5	198658	51.534 ng/ml
Oxymorphone	1.460	134864	6.708E+05	43.6	1.0764E+05	106817	53.275 ng/ml
Phentermine	3.828	54214	206.76	4.8	30.629	123450	51.520 ng/ml
Promethazine	5.563	58025	36618	32.0	280.99	53223	50.237 ng/ml
Quetiapine	5.555	92024	3316.2	59.6	1292.9	25025	52.808 ng/ml
Sertraline	5.782	19430	15472	100.4	11076	18776	50.518 ng/ml
Temazepam	5.829	144824	7023.1	31.1	397.59	151231	48.753 ng/ml
Tramadol	4.283	432200	576.28	3.4	92.425	471372	50.915 ng/ml
Trazodone	5.142	68324	2456.3	78.4	15652	58446	47.913 ng/ml
Venlafaxine	5.083	252514	40720	38.9	823.96	261257	49.706 ng/ml
Zolpidem	4.909	577914	4.5667E+05	30.9	32938	524680	50.834 ng/ml

AM #28 Multi-Drug Quant. Results

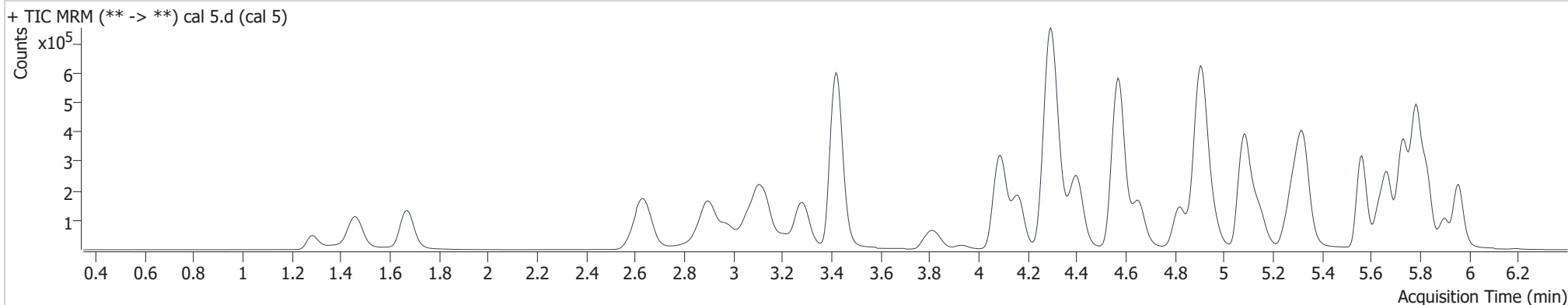
Batch results
Calibration Last Update

D:\MassHunter\Data\2019\am28-27 090619\QuantResults\mdq p1.batch.bin
9/9/2019 1:46:04 PM

Instrument 69679
Type Cal
Acq. Method mdq p1 cda 121818.m
Sample Position P2-E1
Injection Volume 2
Acq. Date-Time 9/6/2019 7:01:02 PM
Sample Info.

Data File cal 5.d
Sample cal 5
Operator Anne Nord
Comment

Sample Chromatogram



Name	RT	Resp.	S/N	Ratio	S/N	ISTD Resp.	Final Conc.
6-MAM	3.188	13671	896.81	73.9	15913	40797	9.528 ng/ml
7-aminoclonazepam	4.307	231082	630.74	85.7	3419.9	107604	104.752 ng/ml
a-hydroxyalprazolam	5.709	28911	219.72	59.6	3815.4	17031	98.049 ng/ml
alpha-PVP	4.407	404009	5851.9	52.6	3280.9	184850	96.696 ng/ml
Alprazolam	5.787	406650	1800.9	110.6	8360.2	149687	97.191 ng/ml
Amphetamine	3.127	485108	4709.3	53.0	2093.5	96100	102.409 ng/ml
Benzoyllecgonine	3.936	21850	34177	8.8	29.996	8011	96.515 ng/ml
Buprenorphine	5.739	2819	367.3	21.2	740.47	11557	10.306 ng/ml
Bupropion	4.824	267402	1104.6	59.4	1971.9	111874	99.585 ng/ml
Carisoprodol	5.738	357514	2.6246E+05	58.4	1524.4	181992	99.159 ng/ml
Citalopram	5.261	174946	4216.5	46.4	816.18	78957	103.350 ng/ml
Clonazepam	5.633	114461	4635.9	33.0	56527	20863	102.080 ng/ml
Cocaine	4.302	451848	5.6233E+05	43.7	28792	356419	97.674 ng/ml
Codeine	2.653	90186	241.8	107.1	35287	47643	100.984 ng/ml
Cyclobenzaprine	5.640	167094	1.8129E+05	10.1	186.26	67045	101.059 ng/ml
Dextromethorphan	5.306	107327	288.65	75.1	3110.2	52228	99.647 ng/ml
Dextrorphan	4.161	130741	1.2812E+05	209.0	1853.5	157144	98.356 ng/ml
Diazepam	5.957	259984	4945.8	86.1	6115.2	128266	98.570 ng/ml

cal 5

Generated at 1:46 PM on 9/9/2019

AM #28 Multi-Drug Quant. Results

Name	RT	Resp.	S/N	Ratio	S/N	ISTD Resp.	Final Conc.
Dihydrocodeine	2.627	247470	41264	64.6	906.36	146858	104.894 ng/ml
Diphenhydramine	5.332	463471	9579.3	34.3	2560.8	271925	96.969 ng/ml
Doxylamine	4.574	959920	5751.4	97.3	34677	442375	98.160 ng/ml
EDDP	5.300	117189	69292	233.9	16109	139603	101.737 ng/ml
Fentanyl	5.127	13727	2553.6	73.8	12782	72505	9.845 ng/ml
Fluoxetine	5.721	181860	28639	8.7	9256.5	78609	98.634 ng/ml
Hydrocodone	3.074	222430	1745.3	39.7	1198	137950	101.111 ng/ml
Hydromorphone	1.673	259542	2.8061E+05	73.9	6505.7	99998	99.879 ng/ml
Ketamine	4.087	484873	7724.8	38.3	319.12	244856	100.225 ng/ml
Lamotrigine	4.335	63403	3665.6	87.4	3650.9	149687	100.195 ng/ml
Lorazepam	5.755	40525	1064.9	55.5	205.58	149687	101.642 ng/ml
Meprobamate	4.957	181551	15338	30.3	6670.4	86852	94.439 ng/ml
Methadone	5.669	290128	4386.5	48.5	17846	144942	99.361 ng/ml
Methamphetamine	3.284	334131	839.01	38.9	136.34	131993	108.852 ng/ml
Metoprolol	4.364	100474	4452.7	96.7	2685.7	131993	107.994 ng/ml
Mirtazapine	4.655	342020	312.07	47.4	17295	78957	89.246 ng/ml
Mitragynine	5.255	37527	37480	38.9	14298	144942	107.390 ng/ml
Morphine	1.287	53245	98913	22.2	2476.6	7053	99.802 ng/ml
Norbuprenorphine	5.034	437	324.2	97.3	363.69	2608	8.911 ng/ml
Nordiazepam	5.902	137905	46347	60.7	51664	46721	102.785 ng/ml
Norfentanyl	4.122	67813	304.99	40.8	466.88	322804	9.497 ng/ml
Norhydrocodone	3.125	13895	346	41.8	42.665	40340	94.007 ng/ml
Noroxycodone	2.977	185562	516.81	40.6	765.12	69054	99.593 ng/ml
O-desmethyl-tramadol	3.425	1353844	55571	6.5	6546.4	755858	94.867 ng/ml
Oxazepam	5.768	61919	415.69	71.9	380.64	36611	101.919 ng/ml
Oxycodone	2.900	461333	2682.5	28.9	2271.8	241707	101.121 ng/ml
Oxymorphone	1.460	305354	8.155E+05	43.7	3558.5	125179	103.983 ng/ml
Phentermine	3.828	141649	415.36	4.7	206.37	161094	103.804 ng/ml
Promethazine	5.563	282597	69772	31.3	229.83	130198	100.171 ng/ml
Quetiapine	5.555	283337	2.482E+05	59.8	1.8094E+05	41368	98.768 ng/ml
Sertraline	5.782	94071	8289.6	104.9	53789	45946	100.444 ng/ml
Temazepam	5.829	321505	6192.5	31.2	1087.3	170134	96.018 ng/ml
Tramadol	4.283	1006015	64415	3.5	1672.7	568683	99.003 ng/ml
Trazodone	5.142	232183	2.4194E+05	77.9	33224	101122	93.720 ng/ml
Venlafaxine	5.083	674114	2311	38.8	3181.8	362152	95.498 ng/ml
Zolpidem	4.909	1368487	1.5539E+05	30.3	1.9698E+05	629920	100.540 ng/ml

AM #28 Multi-Drug Quant. Results

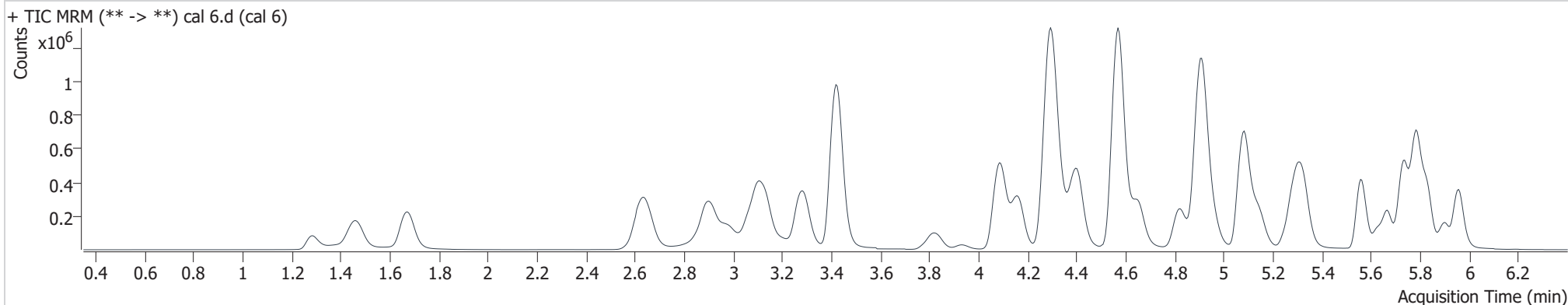
Batch results
Calibration Last Update

D:\MassHunter\Data\2019\am28-27 090619\QuantResults\mdq p1.batch.bin
 9/9/2019 1:46:04 PM

Instrument 69679
Type Cal
Acq. Method mdq p1 cda 121818.m
Sample Position P2-F1
Injection Volume 2
Acq. Date-Time 9/6/2019 7:11:49 PM
Sample Info.

Data File cal 6.d
Sample cal 6
Operator Anne Nord
Comment

Sample Chromatogram



Name	RT	Resp.	S/N	Ratio	S/N	ISTD Resp.	Final Conc.
6-MAM	3.188	29492	2822.3	75.6	11540	34717	24.193 ng/ml
7-aminoclonazepam	4.307	399464	10464	85.5	1026.7	77274	253.752 ng/ml
a-hydroxyalprazolam	5.709	53913	661.65	57.5	914.73	12028	260.506 ng/ml
alpha-PVP	4.402	894083	2454.5	52.4	34269	162087	243.857 ng/ml
Alprazolam	5.787	747550	1282.4	110.2	4243.3	107736	247.794 ng/ml
Amphetamine	3.122	939321	8498.4	51.7	5156.8	77556	246.926 ng/ml
Benzoylcegonine	3.931	50635	490.72	7.9	4731.3	7136	252.395 ng/ml
Buprenorphine	5.744	2876	377.63	21.1	837.83	4969	25.771 ng/ml
Bupropion	4.824	506505	6095.7	59.1	5013.8	85504	249.912 ng/ml
Carisoprodol	5.738	695261	1.0943E+06	59.3	7873.2	141404	248.770 ng/ml
Citalopram	5.261	248038	15934	47.3	1.2663E+05	46241	251.363 ng/ml
Clonazepam	5.628	144309	9116.6	34.7	3065.3	11571	233.343 ng/ml
Cocaine	4.302	1008650	3727	43.6	56151	310108	250.899 ng/ml
Codeine	2.653	177400	622	107.2	1707.9	37962	249.808 ng/ml
Cyclobenzaprine	5.635	120856	72418	10.6	226.62	19812	247.646 ng/ml
Dextromethorphan	5.306	114844	6930.6	77.3	8779.4	22843	244.388 ng/ml
Dextrorphan	4.161	271203	844.12	212.1	91703	129948	246.859 ng/ml



AM #28 Multi-Drug Quant. Results

Name	RT	Resp.	S/N	Ratio	S/N	ISTD Resp.	Final Conc.
Diazepam	5.957	502549	1923.6	84.9	4617.7	97655	250.541 ng/ml
Dihydrocodeine	2.627	517239	42625	64.2	242.03	124243	260.434 ng/ml
Diphenhydramine	5.327	607137	5880.5	34.5	4035.3	139335	248.047 ng/ml
Doxylamine	4.569	2374907	2211.3	96.9	57152	429883	250.059 ng/ml
EDDP	5.295	258693	1.1187E+05	239.0	10499	126582	248.301 ng/ml
Fentanyl	5.122	11451	298.63	75.3	6390.5	24172	24.700 ng/ml
Fluoxetine	5.715	119387	2450.2	8.9	10323	20303	251.601 ng/ml
Hydrocodone	3.074	471620	768.44	40.1	988.47	117694	252.218 ng/ml
Hydromorphone	1.673	503244	13436	73.7	904.02	76260	254.200 ng/ml
Ketamine	4.087	1019591	2857.1	38.5	397.89	207083	249.799 ng/ml
Lamotrigine	4.335	113194	5322.4	86.9	2550.2	107736	248.568 ng/ml
Lorazepam	5.761	65313	4459.9	58.7	215.72	107736	229.961 ng/ml
Meprobamate	4.957	343618	2.9465E+05	30.3	4654.9	64633	240.152 ng/ml
Methadone	5.669	317892	5948.3	47.3	8796.1	61818	255.358 ng/ml
Methamphetamine	3.284	763568	5066	39.0	1928.5	127259	264.444 ng/ml
Metoprolol	4.364	217583	3644.4	96.1	1519.5	127259	243.599 ng/ml
Mirtazapine	4.650	568809	83455	47.8	3269.2	46241	252.910 ng/ml
Mitragynine	5.255	35934	792.49	39.2	282.41	61818	241.707 ng/ml
Morphine	1.287	99306	5.6547E+05	23.4	74428	5119	256.670 ng/ml
Norbuprenorphine	5.034	558	433	91.0	633.15	1111	27.120 ng/ml
Nordiazepam	5.902	247195	26799	60.6	1.6239E+05	34301	252.021 ng/ml
Norfentanyl	4.122	158813	69692	40.3	2721	294632	24.313 ng/ml
Norhydrocodone	3.125	35545	1101.5	42.3	256.02	34326	222.320 ng/ml
Noroxycodone	2.977	362728	2969.4	41.5	1224.4	53665	250.813 ng/ml
O-desmethyl-tramadol	3.420	2818976	1.0651E+05	6.4	1754.5	607066	245.515 ng/ml
Oxazepam	5.763	90996	1402.4	74.3	475.37	21244	259.410 ng/ml
Oxycodone	2.900	947325	18438	29.5	7177.6	198185	254.321 ng/ml
Oxymorphone	1.460	568298	30700	43.9	14068	93569	260.586 ng/ml
Phentermine	3.828	300642	952.82	4.6	229.67	138981	256.319 ng/ml
Promethazine	5.563	209788	3359.8	31.9	1427.9	38769	249.964 ng/ml
Quetiapine	5.555	568052	3.1219E+05	59.0	4.7001E+05	31473	261.042 ng/ml
Sertraline	5.782	53841	2232.6	103.3	52735	11302	234.361 ng/ml
Temazepam	5.829	600104	15447	30.8	943.54	122249	249.114 ng/ml
Tramadol	4.283	2264663	1.4734E+05	3.5	223.43	514619	247.514 ng/ml
Trazodone	5.142	399884	66910	80.9	575.2	66539	244.654 ng/ml
Venlafaxine	5.083	1547427	63094	38.7	8858.8	324007	244.636 ng/ml
Zolpidem	4.909	2903693	25965	30.8	1.2541E+05	528957	254.483 ng/ml

AM #28 Multi-Drug Quant. Results

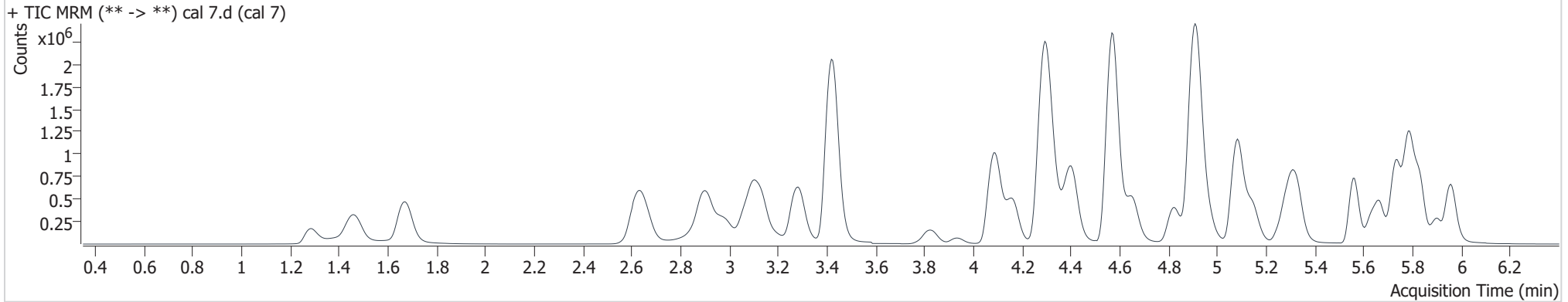
Batch results
Calibration Last Update

D:\MassHunter\Data\2019\am28-27 090619\QuantResults\mdq p1.batch.bin
9/9/2019 1:46:04 PM

Instrument 69679
Type Cal
Acq. Method mdq p1 cda 121818.m
Sample Position P2-G1
Injection Volume 2
Acq. Date-Time 9/6/2019 7:22:37 PM
Sample Info.

Data File cal 7.d
Sample cal 7
Operator Anne Nord
Comment

Sample Chromatogram



Name	RT	Resp.	S/N	Ratio	S/N	ISTD Resp.	Final Conc.
6-MAM	3.183	68006	7689.3	75.4	71014	37442	51.755 ng/ml
7-aminoclonazepam	4.307	646249	4575.5	84.3	221.81	67875	468.317 ng/ml
a-hydroxyalprazolam	5.709	114250	3730.3	56.7	141.88	14584	456.017 ng/ml
alpha-PVP	4.407	1703781	2419.1	51.9	4084.7	152178	494.835 ng/ml
Alprazolam	5.787	1459206	18865	112.0	18786	104832	496.800 ng/ml
Amphetamine	3.122	1676549	771.03	50.2	2921.2	70810	483.543 ng/ml
Benzoyllecgonine	3.931	129063	76380	7.9	11271	9364	491.065 ng/ml
Buprenorphine	5.739	4382	151.42	16.4	902.51	4070	48.769 ng/ml
Bupropion	4.824	877271	36343	59.3	6646.7	74636	497.950 ng/ml
Carisoprodol	5.738	1329051	4325.7	58.8	3966.5	135917	495.129 ng/ml
Citalopram	5.261	413054	249.18	47.8	14586	38629	501.879 ng/ml
Clonazepam	5.633	466964	7819.4	33.5	92440	16946	516.802 ng/ml
Cocaine	4.302	1929750	5.5234E+05	43.5	77760	298455	498.951 ng/ml
Codeine	2.658	346179	651.17	105.6	3844.1	38314	483.326 ng/ml
Cyclobenzaprine	5.640	263935	6208.1	10.5	1858.9	22149	483.949 ng/ml
Dextromethorphan	5.306	222837	1.1429E+05	76.9	16171	21228	510.723 ng/ml
Dextrorphan	4.161	448639	973.57	211.0	96217	106452	498.590 ng/ml
Diazepam	5.957	1043536	15591	85.2	5427.8	103347	491.768 ng/ml

cal 7

Generated at 1:46 PM on 9/9/2019



AM #28 Multi-Drug Quant. Results

Name	RT	Resp.	S/N	Ratio	S/N	ISTD Resp.	Final Conc.
Dihydrocodeine	2.622	1123887	2249	65.4	45699	147992	475.798 ng/ml
Diphenhydramine	5.332	1119846	86506	34.0	6714.1	131382	485.297 ng/ml
Doxylamine	4.572	4333889	5187.9	97.4	2737.1	395212	496.451 ng/ml
EDDP	5.295	390838	4.745E+05	240.1	9960.5	95024	500.159 ng/ml
Fentanyl	5.127	24832	21976	76.3	1408.2	26235	49.396 ng/ml
Fluoxetine	5.715	229429	5275.7	8.4	1871.3	20015	491.013 ng/ml
Hydrocodone	3.074	1012108	1807.2	40.4	701.71	126892	502.654 ng/ml
Hydromorphone	1.673	1156279	6224.7	74.6	25975	90074	494.645 ng/ml
Ketamine	4.087	2365711	1108.8	37.8	1613.5	242292	495.773 ng/ml
Lamotrigine	4.335	236723	2416.1	86.8	6406.1	104832	534.260 ng/ml
Lorazepam	5.755	118402	5358.1	57.8	574.06	104832	430.079 ng/ml
Meprobamate	4.962	681456	6.7537E+05	30.2	37353	61439	500.987 ng/ml
Methadone	5.669	621969	51312	47.2	2303.7	63983	482.770 ng/ml
Methamphetamine	3.284	1359661	4901	40.4	1699.3	119568	505.379 ng/ml
Metoprolol	4.364	371170	2294	96.3	37549	119568	442.950 ng/ml
Mirtazapine	4.655	1050974	778.31	47.3	75088	38629	559.023 ng/ml
Mitragynine	5.255	67917	2179	38.7	15218	63983	441.786 ng/ml
Morphine	1.287	229744	9.0216E+05	23.4	3.6259E+05	6274	484.603 ng/ml
Norbuprenorphine	5.034	928	1289.4	101.0	816.85	1043	48.139 ng/ml
Nordiazepam	5.902	458323	9046.8	61.7	2.8592E+05	33606	477.601 ng/ml
Norfentanyl	4.127	324213	46508	40.9	8665.4	286587	50.989 ng/ml
Norhydrocodone	3.125	93233	591.29	37.7	155.51	36738	501.249 ng/ml
Noroxycodone	2.977	753205	3155.2	40.4	642.26	56625	493.777 ng/ml
O-desmethyl-tramadol	3.422	6712793	3.3608E+05	6.2	35444	716649	494.968 ng/ml
Oxazepam	5.763	145976	1909.2	72.9	921.01	17676	500.917 ng/ml
Oxycodone	2.900	2157789	5457.1	29.2	∞	228853	502.353 ng/ml
Oxymorphone	1.460	1201168	1.8256E+06	43.3	2.1746E+06	101708	507.774 ng/ml
Phentermine	3.828	535812	1344.3	4.6	514.97	129489	490.897 ng/ml
Promethazine	5.563	436315	706.09	31.9	3000.1	40716	495.160 ng/ml
Quetiapine	5.555	982062	17256	59.4	7.3678E+05	27711	513.031 ng/ml
Sertraline	5.782	91601	71297	104.9	1.2911E+05	8969	503.021 ng/ml
Temazepam	5.829	1293330	6971.7	30.7	1294.5	127989	512.602 ng/ml
Tramadol	4.283	4392033	1.7811E+05	3.4	4556.7	493197	501.720 ng/ml
Trazodone	5.142	765471	83700	78.9	1111.8	61362	507.404 ng/ml
Venlafaxine	5.083	2798687	1991.9	38.2	1997.8	287018	499.211 ng/ml
Zolpidem	4.909	6833081	2.9416E+05	30.3	4110.6	637114	497.469 ng/ml

AM #28 Multi-Drug Quant. Results

Batch results

D:\MassHunter\Data\2019\am28-27 090619\QuantResults\mdq p1.batch.bin

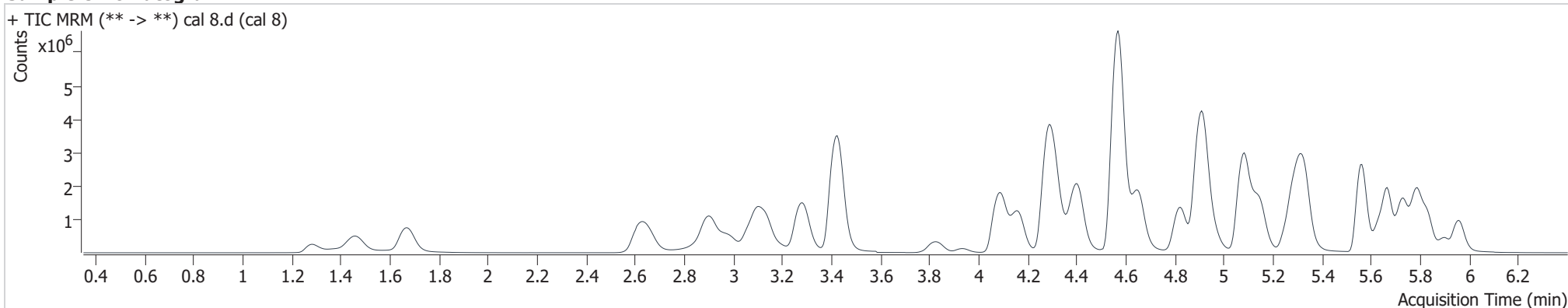
Calibration Last Update

9/9/2019 1:46:04 PM

Instrument 69679
Type Cal
Acq. Method mdq p1 cda 121818.m
Sample Position P2-H1
Injection Volume 2
Acq. Date-Time 9/6/2019 7:33:25 PM
Sample Info.

Data File cal 8.d
Sample cal 8
Operator Anne Nord
Comment

Sample Chromatogram



Name	RT	Resp.	S/N	Ratio	S/N	ISTD Resp.	Final Conc.
6-MAM	3.188	140766	1752	74.8	16452	36200	110.828 ng/ml
7-aminoclonazepam	4.313	613813	10899	85.6	17563	36865	819.818 ng/ml
a-hydroxyalprazolam	5.709	168679	587.09	58.7	1038	10234	960.525 ng/ml
alpha-PVP	4.407	4477725	1.512E+05	51.6	12112	195075	1014.373 ng/ml
Alprazolam	5.787	2102793	694.41	111.1	2917.9	74350	1009.133 ng/ml
Amphetamine	3.127	3481699	44768	50.9	8364.9	80359	885.570 ng/ml
Benzoyllecgonine	3.936	239653	2.4679E+05	7.9	265.88	8076	1058.283 ng/ml
Buprenorphine	5.739	15613	967.42	16.5	184.4	8902	80.033 ng/ml
Bupropion	4.824	3080562	1.5218E+06	59.1	23085	129157	1012.604 ng/ml
Carisoprodol	5.738	1790718	5.0648E+05	58.5	7744.5	90855	998.389 ng/ml
Citalopram	5.261	1596383	47876	46.7	2.3512E+05	75572	992.289 ng/ml
Clonazepam	5.633	656150	48113	33.1	4769.3	13388	919.980 ng/ml
Cocaine	4.307	3883600	2.3396E+05	42.8	3.4539E+05	299106	1002.140 ng/ml
Codeine	2.658	589585	1853	104.5	1458	32383	974.265 ng/ml
Cyclobenzaprine	5.635	1525147	1.6518E+06	10.5	55299	60970	1016.126 ng/ml
Dextromethorphan	5.306	982957	2.3842E+05	77.6	2708.4	47458	1008.083 ng/ml



AM #28 Multi-Drug Quant. Results

Name	RT	Resp.	S/N	Ratio	S/N	ISTD Resp.	Final Conc.
Dextrophan	4.161	1228334	1.1895E+05	213.3	76488	144557	1005.348 ng/ml
Diazepam	5.957	1628997	7093.5	86.0	12252	78670	1008.660 ng/ml
Dihydrocodeine	2.617	1963101	61918	65.6	42647	145717	844.733 ng/ml
Diphenhydramine	5.332	4628886	1.7655E+05	33.2	33387	258233	1020.687 ng/ml
Doxylamine	4.568	12826799	∞	97.4	2.8653E+05	576720	1006.989 ng/ml
EDDP	5.295	1480472	2.3585E+05	238.9	1.0062E+05	174139	1034.287 ng/ml
Fentanyl	5.127	143078	16439	74.8	1.4366E+05	69814	107.002 ng/ml
Fluoxetine	5.715	1420595	1.1857E+05	8.7	1.1492E+05	60422	1007.722 ng/ml
Hydrocodone	3.074	2052282	1454.2	39.8	872.78	130384	992.561 ng/ml
Hydromorphone	1.673	1996666	9785	74.1	17859	76999	999.357 ng/ml
Ketamine	4.087	4633972	11107	37.9	6009.9	243056	968.457 ng/ml
Lamotrigine	4.335	303883	2156.7	87.4	4561	74350	967.033 ng/ml
Lorazepam	5.755	175822	31790	58.4	1821	74350	902.574 ng/ml
Meprobamate	4.962	1052205	7.6308E+05	29.5	713.45	41768	1137.832 ng/ml
Methadone	5.669	3008904	3843.7	46.9	51683	147530	1012.957 ng/ml
Methamphetamine	3.284	3396429	1496.3	38.9	1494.7	156742	967.285 ng/ml
Metoprolol	4.364	755220	76357	96.0	1.5059E+05	156742	687.978 ng/ml
Mirtazapine	4.652	4060665	3272.8	47.7	5748.5	75572	1103.786 ng/ml
Mitragynine	5.255	298043	87068	39.8	1590	147530	841.242 ng/ml
Morphine	1.287	354321	1.8542E+06	23.7	2.365E+05	4803	976.401 ng/ml
Norbuprenorphine	5.029	4819	3598.5	98.6	3362.2	2596	100.694 ng/ml
Nordiazepam	5.902	697817	4398.9	60.7	2.7974E+05	24831	984.896 ng/ml
Norfentanyl	4.122	737195	57937	40.1	553.98	300000	110.714 ng/ml
Norhydrocodone	3.130	198902	2048.8	41.7	5584.6	37107	1025.281 ng/ml
Noroxycodone	2.977	1427111	469.53	41.3	3874	52745	1004.590 ng/ml
O-desmethyl-tramadol	3.425	12659295	3.7665E+05	6.1	1.3031E+05	658934	1014.905 ng/ml
Oxazepam	5.763	208216	5889.2	72.5	1041.9	12810	986.723 ng/ml
Oxycodone	2.900	4228483	1692.3	29.1	22126	227585	990.608 ng/ml
Oxymorphone	1.455	2011133	4.4852E+06	43.8	2304.4	88810	974.684 ng/ml
Phentermine	3.828	1282907	1367.9	4.4	285.78	170242	894.534 ng/ml
Promethazine	5.563	2648704	1.2831E+06	31.4	3916.9	121905	1004.139 ng/ml
Quetiapine	5.555	3090071	9.4628E+05	58.2	1.3383E+06	47048	951.188 ng/ml
Sertraline	5.782	543610	28897	103.2	4.5748E+05	26021	1029.503 ng/ml
Temazepam	5.829	2029937	79200	30.8	2169.3	97496	1055.980 ng/ml
Tramadol	4.278	9107227	5.8088E+05	3.4	9722.8	526284	975.732 ng/ml



AM #28 Multi-Drug Quant. Results

Name	RT	Resp.	S/N	Ratio	S/N	ISTD Resp.	Final Conc.
Trazodone	5.142	2916432	1123.2	79.6	4.0618E+05	102057	1161.823 ng/ml
Venlafaxine	5.083	7822524	∞	38.5	4229.3	396114	1010.781 ng/ml
Zolpidem	4.907	12652088	3941.4	29.8	1982.1	599473	979.225 ng/ml